



SZABO SCANDIC

Part of Europa Biosite

Produktinformation



Forschungsprodukte & Biochemikalien



Zellkultur & Verbrauchsmaterial



Diagnostik & molekulare Diagnostik



Laborgeräte & Service

Weitere Information auf den folgenden Seiten!
See the following pages for more information!



Lieferung & Zahlungsart

siehe unsere [Liefer- und Versandbedingungen](#)

Zuschläge

- Mindermengenzuschlag
- Trockeneiszuschlag
- Gefahrgutzuschlag
- Expressversand

SZABO-SCANDIC HandelsgmbH

Quellenstraße 110, A-1100 Wien

T. +43(0)1 489 3961-0

F. +43(0)1 489 3961-7

mail@szabo-scandic.com

www.szabo-scandic.com

[linkedin.com/company/szaboscandic](https://www.linkedin.com/company/szaboscandic) 

ELA1 MaxPab mouse polyclonal antibody (B01) MaxPab®

Catalog # : H00001990-B01

規格 : [50 uL]

[List All](#)

Specification

Product Description: Mouse polyclonal antibody raised against a full-length human ELA1 protein.

Immunogen: ELA1 (NP_001962, 1 a.a. ~ 258 a.a) full-length human protein.

Sequence:
 MLVLYGHSTQDLPETNARVVGTEAGRNSWPSQISLQYRSGGSRYHTC
 GGTLRQNWVMTAAHCVDYQKTFRVVAGDHNLSQNDGTEQYVSVQKIV
 VHPYWNSDNVAAGYDIALLRQAQSVTLNSYVQLGVLPEGAILANNSPCYI
 TGWGKTKTNGQLAQLQAYLPSVDYAICSSSYWGSTVKNTMVCAG
 GDGVRSGCQGDSSGGLHCLVNGKYSVHGVTSTFVSSRGCNVRKPTVF
 TQVSAYISWINNVASN

Host: Mouse

Reactivity: Human

Quality Control Testing: Antibody reactive against mammalian transfected lysate.

Storage Buffer: No additive

Storage Instruction: Store at -20°C or lower. Aliquot to avoid repeated freezing and thawing.

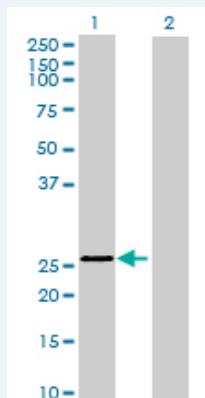
Note: For IHC and IF applications, antibody purification with Protein A will be needed prior to use.

MSDS:  [Download](#)

Datasheet:  [Download](#)

Applications

Western Blot (Transfected lysate)



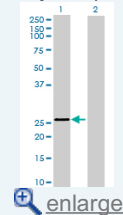
Western Blot analysis of ELA1 expression in transfected 293T cell line (H00001990-T01) by ELA1 MaxPab polyclonal antibody.


Lane 1: ELA1 transfected lysate(28.38 KDa).

Lane 2: Non-transfected lysate.

Application Image

Western Blot (Transfected lysate)



 [enlarge](#)

Gene Information

Entrez GeneID: [1990](#)

**GeneBank
Accession#:** [NM_001971](#)

**Protein
Accession#:** [NP_001962](#)

Gene Name: ELA1

Gene Alias: -

**Gene
Description:** elastase 1, pancreatic

Omim ID: [130120](#)

Gene Ontology: [Hyperlink](#)

Gene Summary: Elastases form a subfamily of serine proteases that hydrolyze many proteins in addition to elastin. Humans have six elastase genes which encode the structurally similar proteins elastase 1, 2, 2A, 2B, 3A, and 3B. Unlike other elastases, pancreatic elastase 1 is not expressed in the pancreas. To date, elastase 1 expression has only been detected in skin keratinocytes. Clinical literature that describes human elastase 1 activity in the pancreas or fecal material is actually referring to chymotrypsin-like elastase family, member 3B. [provided by RefSeq]

**Other
Designations:** pancreatic elastase I

Related Disease

[Cardiovascular Diseases](#) [Diabetes Mellitus, Type 2](#) [Edema](#) [Liver Cirrhosis](#)
[Tobacco Use Disorder](#)