



# SZABO SCANDIC

Part of Europa Biosite

## Produktinformation



Forschungsprodukte & Biochemikalien



Zellkultur & Verbrauchsmaterial



Diagnostik & molekulare Diagnostik



Laborgeräte & Service

Weitere Information auf den folgenden Seiten!  
See the following pages for more information!



### Lieferung & Zahlungsart

siehe unsere [Liefer- und Versandbedingungen](#)

### Zuschläge

- Mindermengenzuschlag
- Trockeneiszuschlag
- Gefahrgutzuschlag
- Expressversand

### SZABO-SCANDIC HandelsgmbH

Quellenstraße 110, A-1100 Wien

T. +43(0)1 489 3961-0

F. +43(0)1 489 3961-7

[mail@szabo-scandic.com](mailto:mail@szabo-scandic.com)

[www.szabo-scandic.com](http://www.szabo-scandic.com)

[linkedin.com/company/szaboscandic](https://www.linkedin.com/company/szaboscandic) 

## ELA2 monoclonal antibody (M07), clone 1A11

Catalog # : H00001991-M07

規格 : [ 50 ug ]

[List All](#)

### Specification

**Product Description:** Mouse monoclonal antibody raised against a partial recombinant ELA2.

**Immunogen:** ELA2 (NP\_001963, 168 a.a. ~ 267 a.a) partial recombinant protein with GST tag. MW of the GST tag alone is 26 KDa.

**Sequence:** VLQELNVTVWVTSLCRRSNVCTLVGRGRQAGVCFGDSGSPLVCNGLIHGIA  
SFVRGGCASGLYPDAFAPVAQFVNWIDSIIQRSEDNPCPHRPDPASR  
TH

**Host:** Mouse

**Reactivity:** Human

**Isotype:** IgG2a Kappa

**Quality Control Testing:** Antibody Reactive Against Recombinant Protein.

**Storage Buffer:** In 1x PBS, pH 7.4

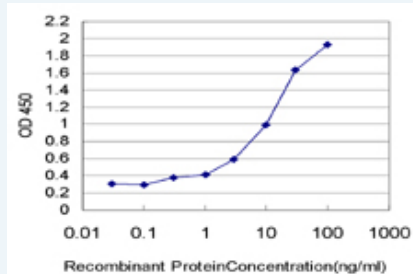
**Storage Instruction:** Store at -20°C or lower. Aliquot to avoid repeated freezing and thawing.

**MSDS:**  [Download](#)


**Datasheet:**  [Download](#)

### Applications

#### Sandwich ELISA (Recombinant protein)



Detection limit for recombinant GST tagged ELA2 is approximately 0.3ng/ml as a capture antibody.

 [Protocol Download](#)

### ELISA

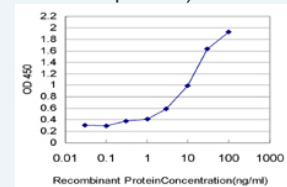
### Gene Information


**Entrez GeneID:** [1991](#)

**GeneBank** [NM\\_001972](#)

### Application Image

Sandwich ELISA (Recombinant protein)



 [enlarge](#)

ELISA

**Accession#:****Protein** [NP\\_001963](#)**Accession#:****Gene Name:** ELA2**Gene Alias:** GE,HLE,HNE,NE,PMN-E**Gene Description:** elastase 2, neutrophil**Omim ID:** [130130](#), [162800](#), [202700](#)**Gene Ontology:** [Hyperlink](#)

**Gene Summary:** Elastases form a subfamily of serine proteases that hydrolyze many proteins in addition to elastin. Humans have six elastase genes which encode the structurally similar proteins. The product of this gene hydrolyzes proteins within specialized neutrophil lysosomes, called azurophil granules, as well as proteins of the extracellular matrix following the protein's release from activated neutrophils. The enzyme may play a role in degenerative and inflammatory diseases by its proteolysis of collagen-IV and elastin of the extracellular matrix. This protein degrades the outer membrane protein A (OmpA) of E. coli as well as the virulence factors of such bacteria as Shigella, Salmonella and Yersinia. Mutations in this gene are associated with cyclic neutropenia and severe congenital neutropenia (SCN). This gene is clustered with other serine protease gene family members, azurocidin 1 and proteinase 3 genes, at chromosome 19pter. All 3 genes are expressed coordinately and their protein products are packaged together into azurophil granules during neutrophil differentiation. [provided by RefSeq]

**Other Designations:** bone marrow serine protease,granulocyte-derived elastase,leukocyte elastase,medullasin,polymorphonuclear elastase**Gene Pathway**[Systemic lupus erythematosus](#)**Related Disease**[Chronic Disease](#) [Coronary Disease](#) [Genetic Predisposition to Disease](#) [Liver Cirrhosis](#)  
[Lung Neoplasms](#) [Myocardial Infarction](#) [Neutropenia](#)  
[Pulmonary Disease, Chronic Obstructive](#)[服務條款](#) | [隱私權政策](#) | [著作及商標](#) | [網站地圖](#)

©2016 亞諾法生技股份有限公司 Abnova Corporation. 版權所有.