



# SZABO SCANDIC

Part of Europa Biosite

## Produktinformation



Forschungsprodukte & Biochemikalien



Zellkultur & Verbrauchsmaterial



Diagnostik & molekulare Diagnostik



Laborgeräte & Service

Weitere Information auf den folgenden Seiten!  
See the following pages for more information!



### Lieferung & Zahlungsart

siehe unsere [Liefer- und Versandbedingungen](#)

### Zuschläge

- Mindermengenzuschlag
- Trockeneiszuschlag
- Gefahrgutzuschlag
- Expressversand

### SZABO-SCANDIC HandelsgmbH

Quellenstraße 110, A-1100 Wien

T. +43(0)1 489 3961-0

F. +43(0)1 489 3961-7

[mail@szabo-scandic.com](mailto:mail@szabo-scandic.com)

[www.szabo-scandic.com](http://www.szabo-scandic.com)

[linkedin.com/company/szaboscandic](https://www.linkedin.com/company/szaboscandic) 



**SERPINB1 MaxPab mouse polyclonal antibody (B01)** MaxPab®

Catalog # : H00001992-B01

規格 : [ 50 uL ]

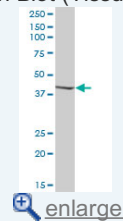
[List All](#)

**Specification**

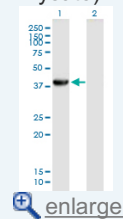
<b>Product Description:</b>	Mouse polyclonal antibody raised against a full-length human SERPINB1 protein.
<b>Immunogen:</b>	SERPINB1 (NP_109591.1, 1 a.a. ~ 379 a.a) full-length human protein.
<b>Sequence:</b>	MEQLSSANTRFALDLFLALSENNPAGNIFISPFSSISSAMAMVFLGTRGNTA AQLSKTFHFNTVEEVHSRFQSLNADINKRGASYILKLANRLYGEKTYNFLP EFLVSTQKTYGADLASVDFQHASEDARKTINQWVKGQTEGKIPPELLASG MVDNMTKLVLVNAIYFKGNWKDKFMKEATTNAPFRLNKKDRKTVKMMY QKKKFAYGYIEDLKCRVLELPYQGEELSMVILLPDDIEDESTGLKKIEEQL TLEKLHEWTKPENLDFIEVNVSLPRFKLEESYTLNSDLARLGVQDLFNSS KADLSGMSGARDIFISKIVHKSFEVNEEGTEAAAATAGIATFCMLMPEEN FTADHPFLFFIRHNSSGSILFLGRFSSP
<b>Host:</b>	Mouse
<b>Reactivity:</b>	Human
<b>Quality Control Testing:</b>	Antibody reactive against mammalian transfected lysate.
<b>Storage Buffer:</b>	No additive
<b>Storage Instruction:</b>	Store at -20°C or lower. Aliquot to avoid repeated freezing and thawing.
<b>Note:</b>	For IHC and IF applications, antibody purification with Protein A will be needed prior to use.
<b>MSDS:</b>	 <a href="#">Download</a>
<b>Datasheet:</b>	 <a href="#">Download</a>

**Application Image**

Western Blot (Tissue lysate)

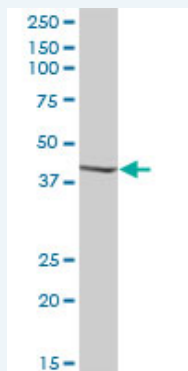


Western Blot (Transfected lysate)




**Applications**

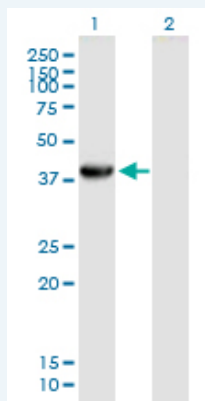
Western Blot (Tissue lysate)



SERPINB1 MaxPab polyclonal antibody. Western Blot analysis of SERPINB1 expression in human pancreas.

 [Protocol Download](#)

### Western Blot (Transfected lysate)



Western Blot analysis of SERPINB1 expression in transfected 293T cell line ([H00001992-T02](#)) by SERPINB1 MaxPab polyclonal antibody.

Lane 1: SERPINB1 transfected lysate(41.69 KDa).

Lane 2: Non-transfected lysate.

 [Protocol Download](#)

### Gene Information

Entrez GeneID: [1992](#)

GeneBank [NM\\_030666.2](#)  
Accession#:

Protein [NP\\_109591.1](#)  
Accession#:

Gene Name: SERPINB1

Gene Alias: EI,ELANH2,LEI,M/NEI,MNEI,PI2

Gene Description: serpin peptidase inhibitor, clade B (ovalbumin), member 1

Omim ID: [130135](#)

Gene Ontology: [Hyperlink](#)

Other Designations: OTTHUMP00000015943,anti-elastase,protease inhibitor 2 (anti-elastase), monocyte/neutrophil derived,serine (or cysteine) proteinase inhibitor, clade B (ovalbumin), member 1

### Related Disease

[Coronary Artery Disease Genetic Predisposition to Disease](#)  
[Hyperparathyroidism, Secondary](#)