



SZABO SCANDIC

Part of Europa Biosite

Produktinformation



Forschungsprodukte & Biochemikalien



Zellkultur & Verbrauchsmaterial



Diagnostik & molekulare Diagnostik



Laborgeräte & Service

Weitere Information auf den folgenden Seiten!
See the following pages for more information!



Lieferung & Zahlungsart

siehe unsere [Liefer- und Versandbedingungen](#)

Zuschläge

- Mindermengenzuschlag
- Trockeneiszuschlag
- Gefahrgutzuschlag
- Expressversand

SZABO-SCANDIC HandelsgmbH

Quellenstraße 110, A-1100 Wien

T. +43(0)1 489 3961-0

F. +43(0)1 489 3961-7

mail@szabo-scandic.com

www.szabo-scandic.com

[linkedin.com/company/szaboscandic](https://www.linkedin.com/company/szaboscandic) 

SERPINB1 purified MaxPab mouse polyclonal antibody (B01P) MaxPab®

Catalog # : H00001992-B01P

規格 : [50 ug]

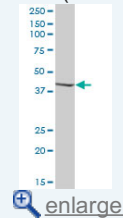
[List All](#)

Specification

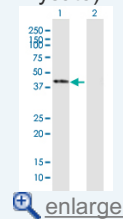
Product Description:	Mouse polyclonal antibody raised against a full-length human SERPINB1 protein.
Immunogen:	SERPINB1 (NP_109591.1, 1 a.a. ~ 379 a.a) full-length human protein.
Sequence:	MEQLSSANTRFALDLFLALSENNPAGNIFISPFSSISSAMAMVFLGTRGNTA AQLSKTFHFNTVEEVHSRFRQSLNADINKRGASYILKLANRLYGEKTYNFLP EFLVSTQKTYGADLASVDFQHASEDARKTINQWVKGQTEGKIPPELLASG MVDNMTKLVLVNAIYFKGNWKDKFMKEATTNAPFRLNKKDRKTVKMMY QKKKFAYGYIEDLKCRVLELPYQGEELSMVILLPDDIEDESTGLKKIEEQL TLEKLHEWTKPENLDFIEVNVSLPRFKLEESYTLNSDLARLGVQDLFNSS KADLSGMSGARDIFISKIVHKSFEVNEEGTEAAAATAGIATFCMLMPEEN FTADHPFLFFIRHNSSGSILFLGRFSSP
Host:	Mouse
Reactivity:	Human
Quality Control Testing:	Antibody reactive against mammalian transfected lysate.
Storage Buffer:	In 1x PBS, pH 7.4
Storage Instruction:	Store at -20°C or lower. Aliquot to avoid repeated freezing and thawing.
MSDS:	Download
Datasheet:	Download

Application Image

Western Blot (Tissue lysate)

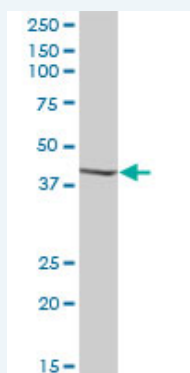


Western Blot (Transfected lysate)



Applications

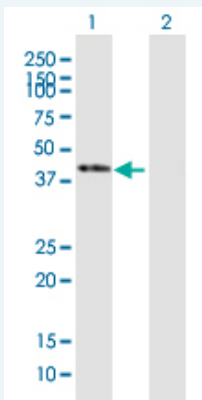
Western Blot (Tissue lysate)



SERPINB1 MaxPab polyclonal antibody. Western Blot analysis of SERPINB1 expression in human pancreas.

[Protocol Download](#)

Western Blot (Transfected lysate)



Western Blot analysis of SERPINB1 expression in transfected 293T cell line ([H00001992-T02](#)) by SERPINB1 MaxPab polyclonal antibody.

Lane 1: SERPINB1 transfected lysate(41.69 KDa).
Lane 2: Non-transfected lysate.

 [Protocol Download](#)

Gene Information

Entrez GeneID: [1992](#)

GeneBank Accession#: [NM_030666.2](#)

Protein Accession#: [NP_109591.1](#)

Gene Name: SERPINB1

Gene Alias: EI,ELANH2,LEI,M/NEI,MNEI,PI2

Gene Description: serpin peptidase inhibitor, clade B (ovalbumin), member 1

Omim ID: [130135](#)

Gene Ontology: [Hyperlink](#)

Other Designations: OTTHUMP00000015943,anti-elastase,protease inhibitor 2 (anti-elastase), monocyte/neutrophil derived,serine (or cysteine) proteinase inhibitor, clade B (ovalbumin), member 1

Related Disease

[Coronary Artery Disease Genetic Predisposition to Disease](#)
[Hyperparathyroidism, Secondary](#)