



# SZABO SCANDIC

Part of Europa Biosite

## Produktinformation



Forschungsprodukte & Biochemikalien



Zellkultur & Verbrauchsmaterial



Diagnostik & molekulare Diagnostik



Laborgeräte & Service

Weitere Information auf den folgenden Seiten!  
See the following pages for more information!



### Lieferung & Zahlungsart

siehe unsere [Liefer- und Versandbedingungen](#)

### Zuschläge

- Mindermengenzuschlag
- Trockeneiszuschlag
- Gefahrgutzuschlag
- Expressversand

### SZABO-SCANDIC HandelsgmbH

Quellenstraße 110, A-1100 Wien

T. +43(0)1 489 3961-0

F. +43(0)1 489 3961-7

[mail@szabo-scandic.com](mailto:mail@szabo-scandic.com)

[www.szabo-scandic.com](http://www.szabo-scandic.com)

[linkedin.com/company/szaboscandic](https://www.linkedin.com/company/szaboscandic) 

**SERPINB1 purified MaxPab rabbit polyclonal antibody (D01P)** MaxPab®

Catalog # : H00001992-D01P

規格 : [ 100 ug ]

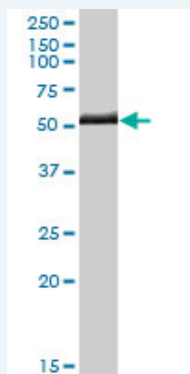
[List All](#)

**Specification**

<b>Product Description:</b>	Rabbit polyclonal antibody raised against a full-length human SERPINB1 protein.
<b>Immunogen:</b>	SERPINB1 (NP_109591.1, 1 a.a. ~ 379 a.a) full-length human protein.
<b>Sequence:</b>	MEQLSSANTRFALDLFLALSENNPAGNIFISPFSSISSAMAMVFLGTRGNTA AQLSKTFHFNTVEEVHSRFQSLNADINKRGASYILKLANRLYGEKTYNFLP EFLVSTQKTYGADLASVDFQHASEDARKTINQWVKGQTEGKIPPELLASG MVDNMTKLVLVNAIYFKGNWVKDFMKEATTNAPFRLNKKDRKTVKMMY QKKKFAYGYIEDLKCRVLELPYQGEELSMVILLPDDIEDESTGLKKIEEQL TLEKLHEWTKPENLDFIEVNVSLPRFKLEESYTLNSDLARLGVQDLFNSS KADLSGMSGARDIFISKIVHKSFEVNEEGTEAAAATAGIATFCMLMPEEN FTADHPFLFFIRHNSSGSILFLGRFSSP
<b>Host:</b>	Rabbit
<b>Reactivity:</b>	Human, Mouse
<b>Quality Control Testing:</b>	Antibody reactive against mammalian transfected lysate.
<b>Storage Buffer:</b>	In 1x PBS, pH 7.4
<b>Storage Instruction:</b>	Store at -20°C or lower. Aliquot to avoid repeated freezing and thawing.
<b>MSDS:</b>	<a href="#">Download</a>
<b>Datasheet:</b>	<a href="#">Download</a>

**Applications**

**Western Blot (Tissue lysate)**



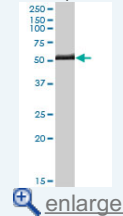
SERPINB1 MaxPab rabbit polyclonal antibody. Western Blot analysis of SERPINB1 expression in human liver.

[Protocol Download](#)

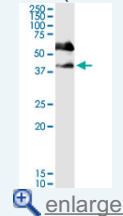
**Western Blot (Tissue lysate)**

**Application Image**

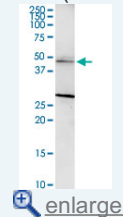
Western Blot (Tissue lysate)



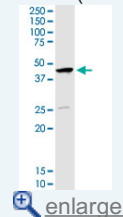
Western Blot (Tissue lysate)



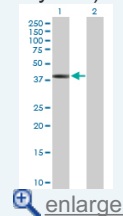
Western Blot (Tissue lysate)

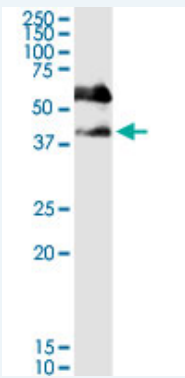


Western Blot (Cell lysate)



Western Blot (Transfected lysate)

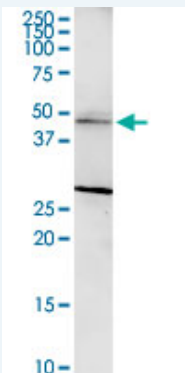




SERPINB1 MaxPab rabbit polyclonal antibody. Western Blot analysis of SERPINB1 expression in human pancreas.

 [Protocol Download](#)

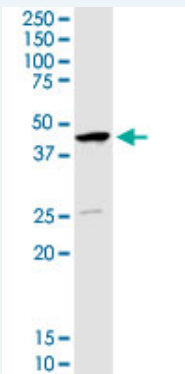
#### Western Blot (Tissue lysate)



SERPINB1 MaxPab rabbit polyclonal antibody. Western Blot analysis of SERPINB1 expression in mouse kidney.

 [Protocol Download](#)

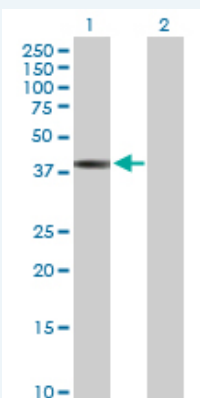
#### Western Blot (Cell lysate)



SERPINB1 MaxPab rabbit polyclonal antibody. Western Blot analysis of SERPINB1 expression in MCF-7.

 [Protocol Download](#)

#### Western Blot (Transfected lysate)



Western Blot analysis of SERPINB1 expression in transfected 293T cell line (H00001992-T01) by SERPINB1 MaxPab polyclonal antibody.

Lane 1: SERPINB1 transfected lysate(42.70 KDa).  
Lane 2: Non-transfected lysate.

 [Protocol Download](#)

---

### Gene Information

---

**Entrez GeneID:** [1992](#)

**GeneBank  
Accession#:** [NM\\_030666.2](#)

**Protein  
Accession#:** [NP\\_109591.1](#)

**Gene Name:** SERPINB1

**Gene Alias:** EI,ELANH2,LEI,M/NEI,MNEI,PI2

**Gene  
Description:** serpin peptidase inhibitor, clade B (ovalbumin), member 1

**Omim ID:** [130135](#)

**Gene Ontology:** [Hyperlink](#)

**Other  
Designations:** OTTHUMP00000015943,anti-elastase,protease inhibitor 2 (anti-elastase), monocyte/neutrophil derived,serine (or cysteine) proteinase inhibitor, clade B (ovalbumin), member 1

---

### Related Disease

---

[Coronary Artery Disease Genetic Predisposition to Disease](#)  
[Hyperparathyroidism, Secondary](#)

---

[服務條款](#) | [隱私權政策](#) | [著作及商標](#) | [網站地圖](#)

©2016 亞諾法生技股份有限公司 Abnova Corporation. 版權所有.