



# SZABO SCANDIC

Part of Europa Biosite

## Produktinformation



Forschungsprodukte & Biochemikalien



Zellkultur & Verbrauchsmaterial



Diagnostik & molekulare Diagnostik



Laborgeräte & Service

Weitere Information auf den folgenden Seiten!  
See the following pages for more information!



### Lieferung & Zahlungsart

siehe unsere [Liefer- und Versandbedingungen](#)

### Zuschläge

- Mindermengenzuschlag
- Trockeneiszuschlag
- Gefahrgutzuschlag
- Expressversand

### SZABO-SCANDIC HandelsgmbH

Quellenstraße 110, A-1100 Wien

T. +43(0)1 489 3961-0

F. +43(0)1 489 3961-7

[mail@szabo-scandic.com](mailto:mail@szabo-scandic.com)

[www.szabo-scandic.com](http://www.szabo-scandic.com)

[linkedin.com/company/szaboscandic](https://www.linkedin.com/company/szaboscandic) 



## SERPINB1 monoclonal antibody (M01), clone 4A7

Catalog # : H00001992-M01

規格 : [ 100 ug ]

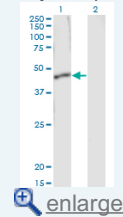
List All

### Specification

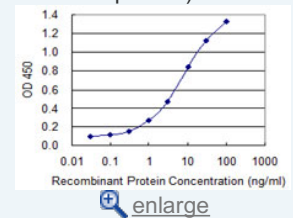
<b>Product Description:</b>	Mouse monoclonal antibody raised against a full-length recombinant SERPINB1.
<b>Immunogen:</b>	SERPINB1 (AAH09015, 1 a.a. ~ 379 a.a) full-length recombinant protein with GST tag. MW of the GST tag alone is 26 KDa.
<b>Sequence:</b>	MEQLSSANTRFALDLFLALSENNPAGNIFISPFSSISSAMAMVFLGTRGNTA AQLSKTFHFNTVEEVHSRFQSLNADINKRGASYILKLANRLYGEKTYNFLP EFLVSTQKTYGADLASVDFQHASEDARKTINQWVKQGQTEGKIPPELLASG MVDNMTKLVLVNAIFYKGNWVKDFMKEATTNAPFRLNKKDRKTVKMMY QKKKFAYGYIEDLKCRVLELPYQGEELSMVILLPDDIEDESTGLKKIEEQL TLEKLEHWTKPENLDFIEVNVSLPRFKLEESYTLNSDLARLGVQDLFNSS KADLSGMSGARDIFISKIVHKSFVEVNEEGTEAAAATAGIATFCMLMPEEN FTADHPFLFFIRHNSSGSILFLGRFSSP
<b>Host:</b>	Mouse
<b>Reactivity:</b>	Human
<b>Isotype:</b>	IgG2a Kappa
<b>Quality Control Testing:</b>	Antibody Reactive Against Recombinant Protein.
<b>Storage Buffer:</b>	In 1x PBS, pH 7.4
<b>Storage Instruction:</b>	Store at -20°C or lower. Aliquot to avoid repeated freezing and thawing.
<b>MSDS:</b>	 <a href="#">Download</a>
<b>Datasheet:</b>	 <a href="#">Download</a>

### Application Image

Western Blot (Transfected lysate)



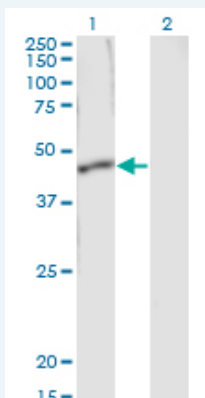
Sandwich ELISA (Recombinant protein)



ELISA

### Applications

#### Western Blot (Transfected lysate)



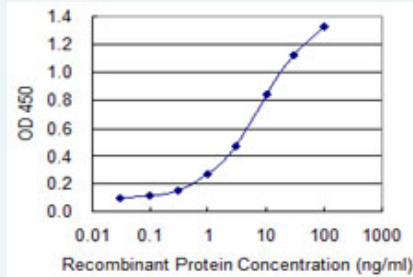
Western Blot analysis of SERPINB1 expression in transfected 293T cell line by SERPINB1 monoclonal antibody (M01), clone 4A7.

Lane 1: SERPINB1 transfected lysate(42.7 KDa).

Lane 2: Non-transfected lysate.

 [Protocol Download](#)

### Sandwich ELISA (Recombinant protein)



Detection limit for recombinant GST tagged SERPINB1 is 0.1 ng/ml as a capture antibody.

 [Protocol Download](#)

### ELISA

#### Gene Information

Entrez GeneID: [1992](#)

GeneBank [BC009015](#)  
Accession#:

Protein [AAH09015](#)  
Accession#:

Gene Name: SERPINB1

Gene Alias: EI,ELANH2,LEI,M/NEI,MNEI,PI2

Gene Description: serpin peptidase inhibitor, clade B (ovalbumin), member 1

Omim ID: [130135](#)

Gene Ontology: [Hyperlink](#)

Other Designations: OTTHUMP00000015943,anti-elastase,protease inhibitor 2 (anti-elastase), monocyte/neutrophil derived,serine (or cysteine) proteinase inhibitor, clade B (ovalbumin), member 1

#### Related Disease

[Coronary Artery Disease](#) [Genetic Predisposition to Disease](#)  
[Hyperparathyroidism, Secondary](#)

[服務條款](#) | [隱私權政策](#) | [著作及商標](#) | [網站地圖](#)

©2016 亞諾法生技股份有限公司 Abnova Corporation. 版權所有.