



# SZABO SCANDIC

Part of Europa Biosite

## Produktinformation



Forschungsprodukte & Biochemikalien



Zellkultur & Verbrauchsmaterial



Diagnostik & molekulare Diagnostik



Laborgeräte & Service

Weitere Information auf den folgenden Seiten!  
See the following pages for more information!



### Lieferung & Zahlungsart

siehe unsere [Liefer- und Versandbedingungen](#)

### Zuschläge

- Mindermengenzuschlag
- Trockeneiszuschlag
- Gefahrgutzuschlag
- Expressversand

### SZABO-SCANDIC HandelsgmbH

Quellenstraße 110, A-1100 Wien

T. +43(0)1 489 3961-0

F. +43(0)1 489 3961-7

[mail@szabo-scandic.com](mailto:mail@szabo-scandic.com)

[www.szabo-scandic.com](http://www.szabo-scandic.com)

[linkedin.com/company/szaboscandic](https://www.linkedin.com/company/szaboscandic) 

## SERPINB1 293T Cell Transient Overexpression Lysate(Denatured)

Catalog # : H00001992-T02

規格 : [ 100 uL ]

[List All](#)

### Specification

**Transfected Cell Line:** 293T

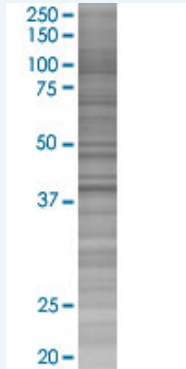
**Plasmid:** pCMV-SERPINB1 full-length

**Host:** Human

**Theoretical MW (kDa):** 42.7

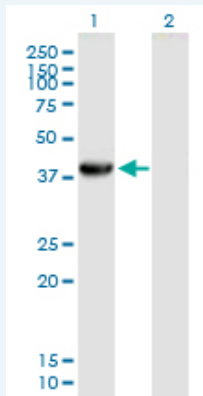
**Quality Control Testing:** Transient overexpression cell lysate was tested with Anti-SERPINB1 antibody ([H00001992-B01](#)) by Western Blots.

#### SDS-PAGE Gel



SERPINB1 transfected lysate.

#### Western Blot



Lane 1: SERPINB1 transfected lysate ( 42.70 KDa)

Lane 2: Non-transfected lysate.

**Storage Buffer:** 1X Sample Buffer (50 mM Tris-HCl, 2% SDS, 10% glycerol, 300 mM 2-mercaptoethanol, 0.01% Bromophenol blue)

**Storage Instruction:** Store at -80°C. Aliquot to avoid repeated freezing and thawing.

**MSDS:**  [Download](#)

### Applications

## Western Blot

### Gene Information

Entrez GeneID: [1992](#)

GeneBank Accession#: [NM\\_030666.2](#)

Protein Accession#: [NP\\_109591.1](#)

Gene Name: SERPINB1

Gene Alias: EI,ELANH2,LEI,M/NEI,MNEI,PI2

Gene Description: serpin peptidase inhibitor, clade B (ovalbumin), member 1

Omim ID: [130135](#)

Gene Ontology: [Hyperlink](#)

Other Designations: OTTHUMP00000015943,anti-elastase,protease inhibitor 2 (anti-elastase), monocyte/neutrophil derived,serine (or cysteine) proteinase inhibitor, clade B (ovalbumin), member 1

### Related Disease

[Coronary Artery Disease](#) [Genetic Predisposition to Disease](#)  
[Hyperparathyroidism, Secondary](#)

[服務條款](#) | [隱私權政策](#) | [著作及商標](#) | [網站地圖](#)

©2016 亞諾法生技股份有限公司 Abnova Corporation. 版權所有.