



# SZABO SCANDIC

Part of Europa Biosite

## Produktinformation



Forschungsprodukte & Biochemikalien



Zellkultur & Verbrauchsmaterial



Diagnostik & molekulare Diagnostik



Laborgeräte & Service

Weitere Information auf den folgenden Seiten!  
See the following pages for more information!



### Lieferung & Zahlungsart

siehe unsere [Liefer- und Versandbedingungen](#)

### Zuschläge

- Mindermengenzuschlag
- Trockeneiszuschlag
- Gefahrgutzuschlag
- Expressversand

### SZABO-SCANDIC HandelsgmbH

Quellenstraße 110, A-1100 Wien

T. +43(0)1 489 3961-0

F. +43(0)1 489 3961-7

[mail@szabo-scandic.com](mailto:mail@szabo-scandic.com)

[www.szabo-scandic.com](http://www.szabo-scandic.com)

[linkedin.com/company/szaboscandic](https://www.linkedin.com/company/szaboscandic) 

# ELAVL1 purified MaxPab mouse polyclonal antibody (B01P) MaxPab®

Catalog # : H00001994-B01P

規格 : [ 50 ug ]

[List All](#)

## Specification

**Product Description:** Mouse polyclonal antibody raised against a full-length human ELAVL1 protein.

**Immunogen:** ELAVL1 (NP\_001410.2, 1 a.a. ~ 326 a.a) full-length human protein.

**Sequence:**  
 MSNGYEDHMAEDCRGDIGRTNLIVNYLPQNMTQDELRSLSFSSIGEVEESA  
 KLIRDKVAGHSLGYGFVNYVTAKDAERAINTLNGLRQLQSKTIKVSYPSS  
 EVIKDANLYISGLPRTMTQKDVEDMFSRFGRIINSRVLVDQTTGLSRGVA  
 FIRFDKRSEAEAEITSFNGHKPPGSSEPITVKFAANPNQKNVALLSPLYH  
 SPARRFGGPVHHQAQRFRFSPMGVDHMSGLSGVNVPGNASSGWCIFY  
 NLGQDADEGILWQMF GPF GAVT NVK VIRDF NTNKCKGFGFVTMTNYEE  
 AAMAIASLNGYRLGDKILQVSFKTNKSHK

**Host:** Mouse

**Reactivity:** Human

**Quality Control Testing:** Antibody reactive against mammalian transfected lysate.

**Storage Buffer:** In 1x PBS, pH 7.4

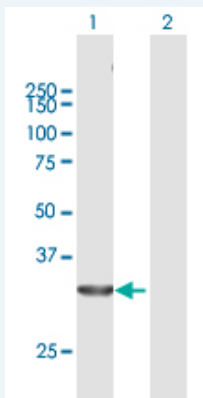
**Storage Instruction:** Store at -20°C or lower. Aliquot to avoid repeated freezing and thawing.

**MSDS:** [Download](#)

**Datasheet:** [Download](#)

## Applications

### Western Blot (Transfected lysate)



Western Blot analysis of ELAVL1 expression in transfected 293T cell line (H00001994-T01) by ELAVL1 MaxPab polyclonal antibody.

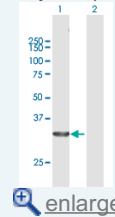
Lane 1: ELAVL1 transfected lysate(35.86 KDa).

Lane 2: Non-transfected lysate.

[Protocol Download](#)

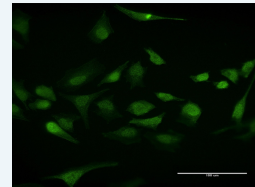
## Application Image

### Western Blot (Transfected lysate)



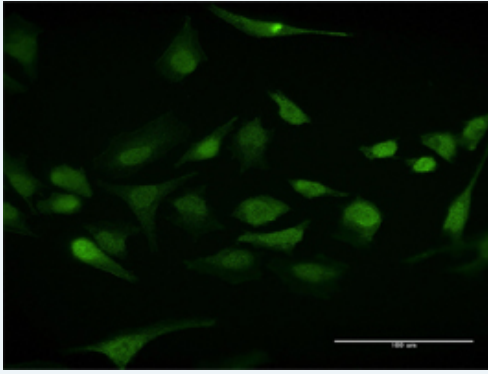
[enlarge](#)

### Immunofluorescence



[enlarge](#)

## Immunofluorescence



[enlarge this image](#)

Immunofluorescence of purified MaxPab antibody to ELAVL1 on HeLa cell. [antibody concentration 10 ug/ml]

 [Protocol Download](#)

## Gene Information

**Entrez GeneID:** [1994](#)

**GeneBank  
Accession#:** [BC003376.2](#)

**Protein  
Accession#:** [NP\\_001410.2](#)

**Gene Name:** ELAVL1

**Gene Alias:** ELAV1,HUR,Hua,MeIG

**Gene  
Description:** ELAV (embryonic lethal, abnormal vision, Drosophila)-like 1 (Hu antigen R)

**Omim ID:** [603466](#)

**Gene Ontology:** [Hyperlink](#)

**Gene Summary:** The protein encoded by this gene is a member of the ELAVL protein family. This encoded protein contains 3 RNA-binding domains and binds cis-acting AU-rich elements. It destabilizes mRNAs and thereby regulates gene expression. [provided by RefSeq]

**Other  
Designations:** ELAV-like 1,Hu antigen R,embryonic lethal, abnormal vision, drosophila, homolog-like 1

## Related Disease

[Cardiovascular Diseases](#) [Diabetes Mellitus, Type 2](#) [Edema](#)

[服務條款](#) | [隱私權政策](#) | [著作及商標](#) | [網站地圖](#)

©2016 亞諾法生技股份有限公司 Abnova Corporation. 版權所有.