



SZABO SCANDIC

Part of Europa Biosite

Produktinformation



Forschungsprodukte & Biochemikalien



Zellkultur & Verbrauchsmaterial



Diagnostik & molekulare Diagnostik



Laborgeräte & Service

Weitere Information auf den folgenden Seiten!
See the following pages for more information!



Lieferung & Zahlungsart

siehe unsere [Liefer- und Versandbedingungen](#)

Zuschläge

- Mindermengenzuschlag
- Trockeneiszuschlag
- Gefahrgutzuschlag
- Expressversand

SZABO-SCANDIC HandelsgmbH

Quellenstraße 110, A-1100 Wien

T. +43(0)1 489 3961-0

F. +43(0)1 489 3961-7

mail@szabo-scandic.com

www.szabo-scandic.com

[linkedin.com/company/szaboscandic](https://www.linkedin.com/company/szaboscandic) 

ELAVL1 purified MaxPab rabbit polyclonal antibody (D01P) MaxPab®

Catalog # : H00001994-D01P

規格 : [100 ug]

[List All](#)

Specification

Product Description: Rabbit polyclonal antibody raised against a full-length human ELAVL1 protein.

Immunogen: ELAVL1 (NP_001410.2, 1 a.a. ~ 326 a.a) full-length human protein.

Sequence:
 MSNGYEDHMAEDCRGDIGRTNLIVNYLPQNMTQDELRSLFSSIGEVEESA
 KLIRDKVAGHSLGYGFVNYVTAKDAERAINTLNGRLQSKTIKVSYPSS
 EVIKDANLYISGLPRTMTQKDVEDMFSRFGRINSRVLVDQTTGLSRGVA
 FIRFDKRSEAEAEITSFNGHKPPGSSEPITVKFAANPNQKNVALLSPLYH
 SPARRFGGPVHHQAQRFRFSPMGVDHMSGLSGVNVPGNASSGWCIFY
 NLGQDADEGILWQMF GPF GAVT NVK VIRDFNTNKCKGFGFVTMTNYEE
 AAMAIASLNGYRLGDKILQVSFKTNKSHK

Host: Rabbit

Reactivity: Human

Quality Control Testing: Antibody reactive against mammalian transfected lysate.

Storage Buffer: In 1x PBS, pH 7.4

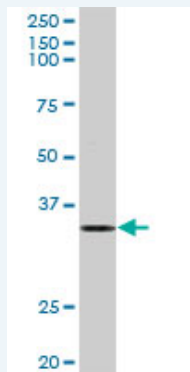
Storage Instruction: Store at -20°C or lower. Aliquot to avoid repeated freezing and thawing.

MSDS:  [Download](#)

Datasheet:  [Download](#)

Applications

Western Blot (Cell lysate)



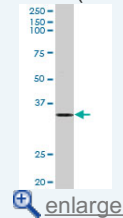
ELAVL1 MaxPab rabbit polyclonal antibody. Western Blot analysis of ELAVL1 expression in A-431.

 [Protocol Download](#)

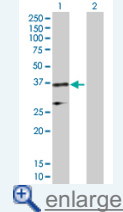
Western Blot (Transfected lysate)

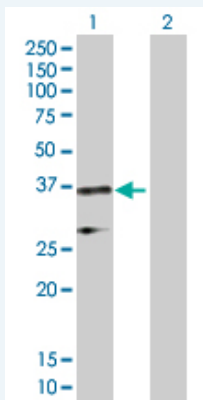
Application Image

Western Blot (Cell lysate)



Western Blot (Transfected lysate)





Western Blot analysis of ELAVL1 expression in transfected 293T cell line ([H00001994-T02](#)) by ELAVL1 MaxPab polyclonal antibody.

Lane 1: ELAVL1 transfected lysate(36.10 KDa).
Lane 2: Non-transfected lysate.

 [Protocol Download](#)

Gene Information

Entrez GeneID: [1994](#)

GeneBank Accession#: [BC003376](#)

Protein Accession#: [NP_001410.2](#)

Gene Name: ELAVL1

Gene Alias: ELAV1,HUR,Hua,MeIG

Gene Description: ELAV (embryonic lethal, abnormal vision, Drosophila)-like 1 (Hu antigen R)

Omim ID: [603466](#)

Gene Ontology: [Hyperlink](#)

Gene Summary: The protein encoded by this gene is a member of the ELAVL protein family. This encoded protein contains 3 RNA-binding domains and binds cis-acting AU-rich elements. It destabilizes mRNAs and thereby regulates gene expression. [provided by RefSeq]

Other Designations: ELAV-like 1,Hu antigen R,embryonic lethal, abnormal vision, drosophila, homolog-like 1

Related Disease

[Cardiovascular Diseases](#) [Diabetes Mellitus, Type 2](#) [Edema](#)