



SZABO SCANDIC

Part of Europa Biosite

Produktinformation



Forschungsprodukte & Biochemikalien



Zellkultur & Verbrauchsmaterial



Diagnostik & molekulare Diagnostik



Laborgeräte & Service

Weitere Information auf den folgenden Seiten!
See the following pages for more information!



Lieferung & Zahlungsart

siehe unsere [Liefer- und Versandbedingungen](#)

Zuschläge

- Mindermengenzuschlag
- Trockeneiszuschlag
- Gefahrgutzuschlag
- Expressversand

SZABO-SCANDIC HandelsgmbH

Quellenstraße 110, A-1100 Wien

T. +43(0)1 489 3961-0

F. +43(0)1 489 3961-7

mail@szabo-scandic.com

www.szabo-scandic.com

[linkedin.com/company/szaboscandic](https://www.linkedin.com/company/szaboscandic) 

ELAVL1 monoclonal antibody (M02), clone 4G8

Catalog # : H00001994-M02

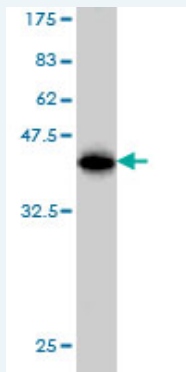
規格 : [100 ug]

[List All](#)

Specification

Product Description:	Mouse monoclonal antibody raised against a partial recombinant ELAVL1.
Immunogen:	ELAVL1 (AAH03376, 1 a.a. ~ 100 a.a) partial recombinant protein with GST tag. MW of the GST tag alone is 26 KDa.
Sequence:	MSNGYEDHMAEDCRGDIGRTNLIVNYLPQNMNQDELRSLFSSIGEVESE KLIRDKVAGHSLGYGFVNYVTAKDAERAINLNLRLQSKTIKVSYPSS
Host:	Mouse
Reactivity:	Human
Isotype:	IgG1 Kappa

Quality Control Testing: Antibody Reactive Against Recombinant Protein.



Western Blot detection against Immunogen (36.74 KDa) .

Storage Buffer: In 1x PBS, pH 7.4

Storage Instruction: Store at -20°C or lower. Aliquot to avoid repeated freezing and thawing.

MSDS: [Download](#)

Datasheet: [Download](#)

Publication Reference

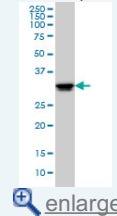
1. [Quantitative Proteomic profiling identifies protein correlates to EGFR kinase inhibition.](#) Kani K, Faca VM, Hughes LD, Zhang W, Fang Q, Shahbaba B, Luethy R, Erde J, Schmidt J, Pitteri SJ, Zhang Q, Katz JE, Gross ME, Plevritis SK, McIntosh MW, Jain A, Hanash S, Agus DB, Mallick P. Mol Cancer Ther. 2012 May;11(5):1071-81.

Applications

Western Blot (Cell lysate)

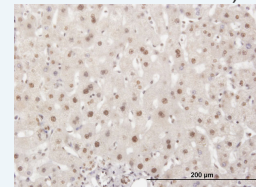
Application Image

Western Blot (Cell lysate)



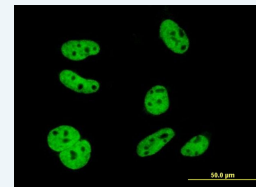
Western Blot (Recombinant protein)

Immunohistochemistry (Formalin/PFA-fixed paraffin-embedded sections)



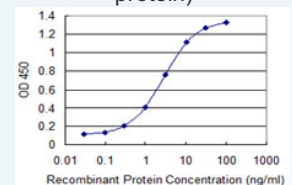
[enlarge](#)

Immunofluorescence



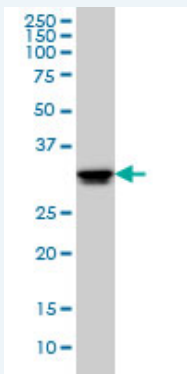
[enlarge](#)

Sandwich ELISA (Recombinant protein)



[enlarge](#)

ELISA



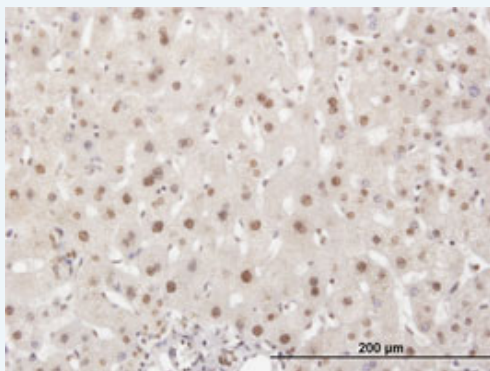
ELAVL1 monoclonal antibody (M02), clone 4G8 Western Blot analysis of ELAVL1 expression in HeLa (Cat # L013V1).

[Protocol Download](#)

Western Blot (Recombinant protein)

[Protocol Download](#)

Immunohistochemistry (Formalin/PFA-fixed paraffin-embedded sections)

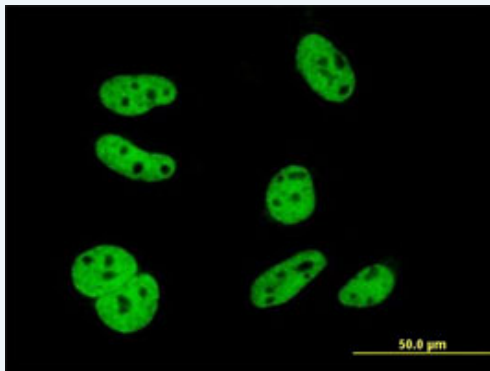


[enlarge this image](#)

Immunoperoxidase of monoclonal antibody to ELAVL1 on formalin-fixed paraffin-embedded human liver. [antibody concentration 3 ug/ml]

[Protocol Download](#)

Immunofluorescence

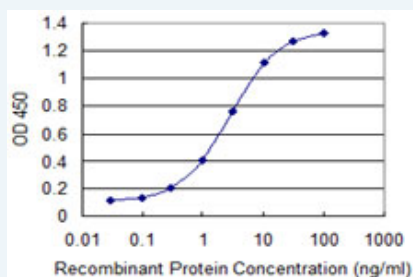


[enlarge this image](#)

Immunofluorescence of monoclonal antibody to ELAVL1 on HeLa cell . [antibody concentration 10 ug/ml]

[Protocol Download](#)

Sandwich ELISA (Recombinant protein)



Detection limit for recombinant GST tagged ELAVL1 is 0.03 ng/ml as a capture antibody.

[Protocol Download](#)

ELISA

Gene Information

Entrez GeneID: [1994](#)

GeneBank
Accession#: [BC003376](#)

Protein
Accession#: [AAH03376](#)

Gene Name: ELAVL1

Gene Alias: ELAV1,HUR,Hua,MeIG

Gene
Description: ELAV (embryonic lethal, abnormal vision, Drosophila)-like 1 (Hu antigen R)

Omim ID: [603466](#)

Gene Ontology: [Hyperlink](#)

Gene Summary: The protein encoded by this gene is a member of the ELAVL protein family. This encoded protein contains 3 RNA-binding domains and binds cis-acting AU-rich elements. It destabilizes mRNAs and thereby regulates gene expression. [provided by RefSeq]

**Other
Designations:** ELAV-like 1,Hu antigen R,embryonic lethal, abnormal vision, drosophila, homolog-like 1

Related Disease

[Cardiovascular Diseases](#) [Diabetes Mellitus, Type 2](#) [Edema](#)