



# SZABO SCANDIC

Part of Europa Biosite

## Produktinformation



Forschungsprodukte & Biochemikalien



Zellkultur & Verbrauchsmaterial



Diagnostik & molekulare Diagnostik



Laborgeräte & Service

Weitere Information auf den folgenden Seiten!  
See the following pages for more information!



### Lieferung & Zahlungsart

siehe unsere [Liefer- und Versandbedingungen](#)

### Zuschläge

- Mindermengenzuschlag
- Trockeneiszuschlag
- Gefahrgutzuschlag
- Expressversand

### SZABO-SCANDIC HandelsgmbH

Quellenstraße 110, A-1100 Wien

T. +43(0)1 489 3961-0

F. +43(0)1 489 3961-7

[mail@szabo-scandic.com](mailto:mail@szabo-scandic.com)

[www.szabo-scandic.com](http://www.szabo-scandic.com)

[linkedin.com/company/szaboscandic](https://www.linkedin.com/company/szaboscandic) 

## ELAVL1 293T Cell Transient Overexpression Lysate(Denatured)

Catalog # : H00001994-T03

規格 : [ 100 uL ]

[List All](#)

### Specification

**Transfected Cell Line:** 293T

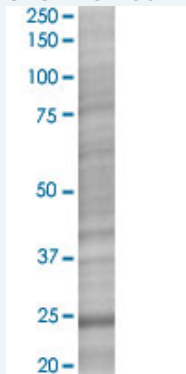
**Plasmid:** pCMV-ELAVL1 full-length

**Host:** Human

**Theoretical MW (kDa):** 36.1

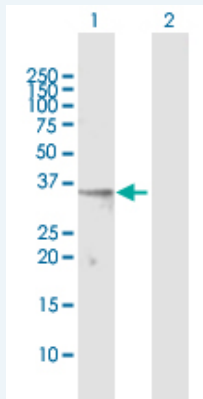
**Quality Control Testing:** Transient overexpression cell lysate was tested with Anti-ELAVL1 antibody ([H00001994-D01](#)) by Western Blots.

#### SDS-PAGE Gel



ELAVL1 transfected lysate.

#### Western Blot



Lane 1: ELAVL1 transfected lysate ( 36.10 KDa)

Lane 2: Non-transfected lysate.

**Storage Buffer:** 1X Sample Buffer (50 mM Tris-HCl, 2% SDS, 10% glycerol, 300 mM 2-mercaptoethanol, 0.01% Bromophenol blue)

**Storage Instruction:** Store at -80°C. Aliquot to avoid repeated freezing and thawing.

**MSDS:**  [Download](#)

### Applications

## Western Blot

### Gene Information

Entrez GeneID: [1994](#)

GeneBank [BC003376](#)  
Accession#:

Protein [NP\\_001410.2](#)  
Accession#:

Gene Name: ELAVL1

Gene Alias: ELAV1,HUR,Hua,MelG

Gene Description: ELAV (embryonic lethal, abnormal vision, Drosophila)-like 1 (Hu antigen R)

Omim ID: [603466](#)

Gene Ontology: [Hyperlink](#)

**Gene Summary:** The protein encoded by this gene is a member of the ELAVL protein family. This encoded protein contains 3 RNA-binding domains and binds cis-acting AU-rich elements. It destabilizes mRNAs and thereby regulates gene expression. [provided by RefSeq]

**Other Designations:** ELAV-like 1,Hu antigen R,embryonic lethal, abnormal vision, drosophila, homolog-like 1

### Related Disease

[Cardiovascular Diseases](#) [Diabetes Mellitus, Type 2](#) [Edema](#)

[服務條款](#) | [隱私權政策](#) | [著作及商標](#) | [網站地圖](#)

©2016 亞諾法生技股份有限公司 Abnova Corporation. 版權所有.