



SZABO SCANDIC

Part of Europa Biosite

Produktinformation



Forschungsprodukte & Biochemikalien



Zellkultur & Verbrauchsmaterial



Diagnostik & molekulare Diagnostik



Laborgeräte & Service

Weitere Information auf den folgenden Seiten!
See the following pages for more information!



Lieferung & Zahlungsart

siehe unsere [Liefer- und Versandbedingungen](#)

Zuschläge

- Mindermengenzuschlag
- Trockeneiszuschlag
- Gefahrgutzuschlag
- Expressversand

SZABO-SCANDIC HandelsgmbH

Quellenstraße 110, A-1100 Wien

T. +43(0)1 489 3961-0

F. +43(0)1 489 3961-7

mail@szabo-scandic.com

www.szabo-scandic.com

[linkedin.com/company/szaboscandic](https://www.linkedin.com/company/szaboscandic) 

ELAVL3 purified MaxPab mouse polyclonal antibody (B01P) MaxPab®

Catalog # : H00001995-B01P

規格 : [50 ug]

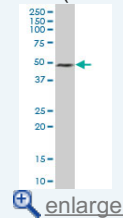
[List All](#)

Specification

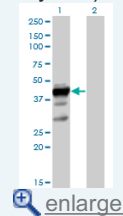
Product Description:	Mouse polyclonal antibody raised against a full-length human ELAVL3 protein.
Immunogen:	ELAVL3 (AAH11875, 1 a.a. ~ 367 a.a) full-length human protein.
Sequence:	MVTQILGAMESQVGGGPAGPALPNGPLLGTNGATDDSKTNLIVNYLPQN MTQDEFKSLFGSIGDIESCKLVRDKITGQSLGYGFVNYSDPNADKAIT LNGLKLQTKTIKVSYPSSASIRDANLYVSGLPRTMSQKEMEQLFSQYG RIITSRILVDQVTGVSARGVGFIRFDKRIEAEAAIKGLNGQKPLGAAEPITVK FANNPSQKTGQALLTHLYQSSARRYAGPLHHQTQRFRLDNLNMYAGV KSPSLIARFSPAIIDGMSGLAGVGLSGGAAGAGWCIFVYVNLSPADESV LWQLFGPFGAVTNVKVIRDFTTNKCKGFVMTNRYDEAAMAIAASLNGY RLGERVLQVSFKTSKQHKA
Host:	Mouse
Reactivity:	Human, Rat
Quality Control Testing:	Antibody reactive against mammalian transfected lysate.
Storage Buffer:	In 1x PBS, pH 7.4
Storage Instruction:	Store at -20°C or lower. Aliquot to avoid repeated freezing and thawing.
MSDS:	Download
Datasheet:	Download

Application Image

Western Blot (Tissue lysate)

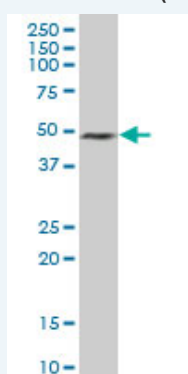


Western Blot (Transfected lysate)



Applications

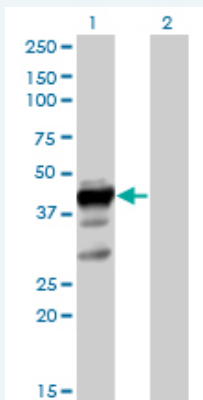
Western Blot (Tissue lysate)



ELAVL3 MaxPab polyclonal antibody. Western Blot analysis of ELAVL3 expression in rat brain.

[Protocol Download](#)

Western Blot (Transfected lysate)



Western Blot analysis of ELAVL3 expression in transfected 293T cell line ([H00001995-T01](#)) by ELAVL3 MaxPab polyclonal antibody.

Lane 1: ELAVL3 transfected lysate(40.48 KDa).
Lane 2: Non-transfected lysate.

 [Protocol Download](#)

Gene Information

Entrez GeneID: [1995](#)

GeneBank Accession#: [BC014144](#)

Protein Accession#: [AAH11875](#)

Gene Name: ELAVL3

Gene Alias: DKFZp547J036,HUC,HUCL,MGC20653,PLE21

Gene Description: ELAV (embryonic lethal, abnormal vision, Drosophila)-like 3 (Hu antigen C)

Omim ID: [603458](#)

Gene Ontology: [Hyperlink](#)

Gene Summary: A member of the ELAVL protein family, ELAV-like 3 is a neural-specific RNA-binding protein which contains three RNP-type RNA recognition motifs. The observation that ELAVL3 is one of several Hu antigens (neuronal-specific RNA-binding proteins) recognized by the anti-Hu serum antibody present in sera from patients with paraneoplastic encephalomyelitis and sensory neuronopathy (PEM/PSN) suggests it has a role in neurogenesis. Two alternatively spliced transcript variants encoding distinct isoforms have been found for this gene. [provided by RefSeq]

Other Designations: ELAV-like protein 3,Hu antigen C,paraneoplastic cerebellar degeneration-associated antigen,paraneoplastic limbic encephalitis antigen 21