



SZABO SCANDIC

Part of Europa Biosite

Produktinformation



Forschungsprodukte & Biochemikalien



Zellkultur & Verbrauchsmaterial



Diagnostik & molekulare Diagnostik



Laborgeräte & Service

Weitere Information auf den folgenden Seiten!
See the following pages for more information!



Lieferung & Zahlungsart

siehe unsere [Liefer- und Versandbedingungen](#)

Zuschläge

- Mindermengenzuschlag
- Trockeneiszuschlag
- Gefahrgutzuschlag
- Expressversand

SZABO-SCANDIC HandelsgmbH

Quellenstraße 110, A-1100 Wien

T. +43(0)1 489 3961-0

F. +43(0)1 489 3961-7

mail@szabo-scandic.com

www.szabo-scandic.com

[linkedin.com/company/szaboscandic](https://www.linkedin.com/company/szaboscandic) 



ELAVL4 MaxPab mouse polyclonal antibody (B01) MaxPab®

Catalog # : H00001996-B01

規格 : [50 uL]

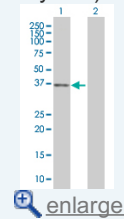
[List All](#)

Specification

Product Description:	Mouse polyclonal antibody raised against a full-length human ELAVL4 protein.
Immunogen:	ELAVL4 (AAH36071.1, 1 a.a. ~ 366 a.a) full-length human protein.
Sequence:	MVMIIISTMEPQVSNPPTSNTSNGPSSNNRNCPSMQTGATDDSKTNLIV NYLPQNMTQEEFRSLFGSIGEIESCKLVRDKITGQSLGYGFVNYIDPKDA EKAINLNLRLQTKTIKVSYPSSASIRDANLYVSGLPKMTQKELEQL FSQYGRITSRILVGQVTGVSARGVGFIRFDKRIEAEAAIKGLNGQKPSGAT EPITVKFANNPSQKSSQALLSQLYQSPNRRYPGPLHHQAQRFRLLNLLN MAYGVKRFSPITIDGMTSLVGMNIPGHTGTGWCIFVYNLSPDSDSEVLW QLFGPFGAVNNVKVIRDFNTNKCKGFGFVTMTNYDEAAMAITSLNGYRL GDRVLQVSFKTNKAHKS
Host:	Mouse
Reactivity:	Human
Quality Control Testing:	Antibody reactive against mammalian transfected lysate.
Storage Buffer:	No additive
Storage Instruction:	Store at -20°C or lower. Aliquot to avoid repeated freezing and thawing.
Note:	For IHC and IF applications, antibody purification with Protein A will be needed prior to use.
MSDS:	 Download
Datasheet:	 Download

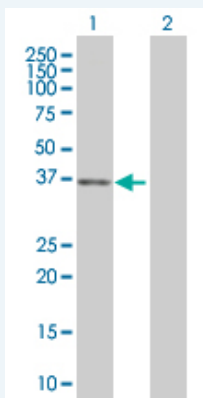
Application Image

Western Blot (Transfected lysate)



Applications

Western Blot (Transfected lysate)



Western Blot analysis of ELAVL4 expression in transfected 293T cell line ([H00001996-T01](#)) by ELAVL4 MaxPab polyclonal antibody.

Lane 1: ELAVL4 transfected lysate(40.26 KDa).

Gene Information

Entrez GeneID: [1996](#)

**GeneBank
Accession#:** [BC036071.1](#)

**Protein
Accession#:** [AAH36071.1](#)

Gene Name: ELAVL4

Gene Alias: HUD,PNEM

**Gene
Description:** ELAV (embryonic lethal, abnormal vision, Drosophila)-like 4 (Hu antigen D)

Omim ID: [168360](#)

Gene Ontology: [Hyperlink](#)

**Other
Designations:** ELAV-like 4, Embryonic lethal, abnormal vision, Drosophila, homolog of, like-4, OTTHUMP00000009612

Related Disease

[Carcinoma, Neuroendocrine Genetic Predisposition to Disease Lung Neoplasms](#)
[Macular Degeneration Parkinson Disease Parkinson disease Small Cell Lung Carcinoma](#)