



# SZABO SCANDIC

Part of Europa Biosite

## Produktinformation



Forschungsprodukte & Biochemikalien



Zellkultur & Verbrauchsmaterial



Diagnostik & molekulare Diagnostik



Laborgeräte & Service

Weitere Information auf den folgenden Seiten!  
See the following pages for more information!



### Lieferung & Zahlungsart

siehe unsere [Liefer- und Versandbedingungen](#)

### Zuschläge

- Mindermengenzuschlag
- Trockeneiszuschlag
- Gefahrgutzuschlag
- Expressversand

### SZABO-SCANDIC HandelsgmbH

Quellenstraße 110, A-1100 Wien

T. +43(0)1 489 3961-0

F. +43(0)1 489 3961-7

[mail@szabo-scandic.com](mailto:mail@szabo-scandic.com)

[www.szabo-scandic.com](http://www.szabo-scandic.com)

[linkedin.com/company/szaboscandic](https://www.linkedin.com/company/szaboscandic) 


## ELAVL4 purified MaxPab mouse polyclonal antibody (B01P) MaxPab®

Catalog # : H00001996-B01P

規格 : [ 50 ug ]

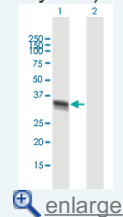
[List All](#)

### Specification

<b>Product Description:</b>	Mouse polyclonal antibody raised against a full-length human ELAVL4 protein.
<b>Immunogen:</b>	ELAVL4 (AAH36071.1, 1 a.a. ~ 366 a.a) full-length human protein.
<b>Sequence:</b>	MVMIISTMEPQVSNPPTSNTSNGPSSNNRNCPSMQTGATDDSKTNLIV NYLPQNMTQEEFRSLFGSIGEIESCKLVRDKITGQSLGYGFVNYIDPKDA EKAINLNLRLQTKTIKVSYPSSASIRDANLYVSGLPKMTMQKELEQL FSQYGRITSRILVGQVTGVSARGVGFIRFDKRIEAEAAIKGLNGQKPSGAT EPITVKFANNPSQKSSQALLSQLYQSPNRRYPGPLHHQAQRFRLDNLLN MAYGVKRFSPITIDGMTSLVGMNIPGHTGTGWCIFVYNLSPDSDSVLW QLFGPF GAVNNVKVIRDFNTNKCKGFGFVTMTNYDEAAMAITSLNGYRL GDRVLQVSFKTNKAHKS
<b>Host:</b>	Mouse
<b>Reactivity:</b>	Human
<b>Quality Control Testing:</b>	Antibody reactive against mammalian transfected lysate.
<b>Storage Buffer:</b>	In 1x PBS, pH 7.4
<b>Storage Instruction:</b>	Store at -20°C or lower. Aliquot to avoid repeated freezing and thawing.
<b>Datasheet:</b>	 <a href="#">Download</a>

### Application Image

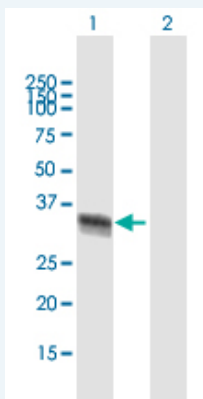
Western Blot (Transfected lysate)



 [enlarge](#)


### Applications

#### Western Blot (Transfected lysate)



Western Blot analysis of ELAVL4 expression in transfected 293T cell line (H00001996-T01) by ELAVL4 MaxPab polyclonal antibody.

Lane 1: ELAVL4 transfected lysate(40.26 KDa).  
Lane 2: Non-transfected lysate.

 [Protocol Download](#)

### Gene Information

**Entrez GeneID:** [1996](#)

**GeneBank** [BC036071.1](#)

**Accession#:**

**Protein** [AAH36071.1](#)

**Accession#:**

**Gene Name:** ELAVL4

**Gene Alias:** HUD,PNEM

**Gene Description:** ELAV (embryonic lethal, abnormal vision, Drosophila)-like 4 (Hu antigen D)

**Omim ID:** [168360](#)

**Gene Ontology:** [Hyperlink](#)

**Other Designations:** ELAV-like 4, Embryonic lethal, abnormal vision, Drosophila, homolog of, like-4, OTTHUMP00000009612

#### **Related Disease**

[Carcinoma, Neuroendocrine Genetic Predisposition to Disease Lung Neoplasms](#)  
[Macular Degeneration Parkinson Disease Parkinson disease Small Cell Lung Carcinoma](#)

[服務條款](#) | [隱私權政策](#) | [著作及商標](#) | [網站地圖](#)

©2016 亞諾法生技股份有限公司 Abnova Corporation. 版權所有.