



SZABO SCANDIC

Part of Europa Biosite

Produktinformation



Forschungsprodukte & Biochemikalien



Zellkultur & Verbrauchsmaterial



Diagnostik & molekulare Diagnostik



Laborgeräte & Service

Weitere Information auf den folgenden Seiten!
See the following pages for more information!



Lieferung & Zahlungsart

siehe unsere [Liefer- und Versandbedingungen](#)

Zuschläge

- Mindermengenzuschlag
- Trockeneiszuschlag
- Gefahrgutzuschlag
- Expressversand

SZABO-SCANDIC HandelsgmbH

Quellenstraße 110, A-1100 Wien

T. +43(0)1 489 3961-0

F. +43(0)1 489 3961-7

mail@szabo-scandic.com

www.szabo-scandic.com

[linkedin.com/company/szaboscandic](https://www.linkedin.com/company/szaboscandic) 

ELF1 MaxPab mouse polyclonal antibody (B01) MaxPab®

Catalog # : H00001997-B01

規格 : [50 uL]

[List All](#)

Specification

Product Description: Mouse polyclonal antibody raised against a full-length human ELF1 protein.

Immunogen: ELF1 (NP_758961.1, 1 a.a. ~ 619 a.a) full-length human protein.

Sequence:
 MAAVVQQNDLVFEFASNVMEDERQLGDPAIFPAVIVEHVPGADILNSYAG
 LACVEEPNDMITESSLDVAEEIIDDDDDITLVEASCHDGDDETIETIEAAE
 ALLNMDSPGPMLEKRIINNIFSSPEDDMVAPVTHVSVTLDGIPVEMET
 QQVQEKYADSPGASSPEQPKRKKGRKTKPPRPDSPATTPNISVKKKNKD
 GKGNTIYLWFEFLALLQDKATCPKYIKWTQREKGIFKLVDKAVSRLWGK
 HKNKPDMMNYETMGRALRYYYQRGILAKVEGQRLVYQFKEMPKDLIYINDE
 DPSSSISSDPSLSSATSNRNQT SRSRVSSSPGVKGGATTVLKPGNSK
 AAKPKDPVEVAQPSEVLRVQPTQSPYPTQLFRTVHVVPVQAVPEGE
 AARTSTMQDETLNSSVQSIRTIQAPTQVPVVVSPRNQQLHTVTLQTVPLT
 TVIASTDPSAGTGSQKFIQAIPSSQPMTVLKENVMLQSQKAGSPPSIVLG
 PAQVQQVLT SNVQ TICNGTVSVASSPSFSATAPVVTFSRSSLVVAHPP
 GTVITSVIKTQETKLTQEVEKKESEDHLKENTEKTEQQQPQPYVMVSSS
 NGFTSQVAMKQNELLEPNSF

Host: Mouse

Reactivity: Human

Quality Control Testing: Antibody reactive against mammalian transfected lysate.

Storage Buffer: No additive

Storage Instruction: Store at -20°C or lower. Aliquot to avoid repeated freezing and thawing.

Note: For IHC and IF applications, antibody purification with Protein A will be needed prior to use.

MSDS:  [Download](#)

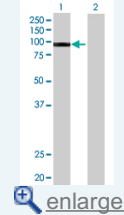
Datasheet:  [Download](#)

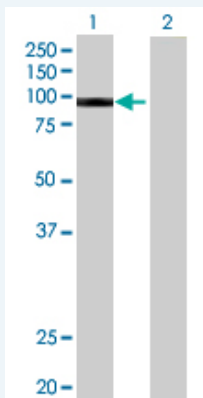
Applications

Western Blot (Transfected lysate)

Application Image

Western Blot (Transfected lysate)





Western Blot analysis of ELF1 expression in transfected 293T cell line ([H00001997-T01](#)) by ELF1 MaxPab polyclonal antibody.

Lane 1: ELF1 transfected lysate(68.09 KDa).

Lane 2: Non-transfected lysate.

 [Protocol Download](#)

Gene Information

Entrez GeneID: [1997](#)

GeneBank [NM_172373.2](#)

Accession#:

Protein [NP_758961.1](#)

Accession#:

Gene Name: ELF1

Gene Alias: -

Gene E74-like factor 1 (ets domain transcription factor)

Description:

Omim ID: [189973](#)

Gene Ontology: [Hyperlink](#)

Gene Summary: This gene encodes an E26 transformation-specific related transcription factor. The encoded protein is primarily expressed in lymphoid cells and acts as both an enhancer and a repressor to regulate transcription of various genes. Alternative splicing results in multiple transcript variants. [provided by RefSeq]

Other OTTHUMP00000018310

Designations:

Related Disease

[Tobacco Use Disorder](#)