



# SZABO SCANDIC

Part of Europa Biosite

## Produktinformation



Forschungsprodukte & Biochemikalien



Zellkultur & Verbrauchsmaterial



Diagnostik & molekulare Diagnostik



Laborgeräte & Service

Weitere Information auf den folgenden Seiten!  
See the following pages for more information!



### Lieferung & Zahlungsart

siehe unsere [Liefer- und Versandbedingungen](#)

### Zuschläge

- Mindermengenzuschlag
- Trockeneiszuschlag
- Gefahrgutzuschlag
- Expressversand

### SZABO-SCANDIC HandelsgmbH

Quellenstraße 110, A-1100 Wien

T. +43(0)1 489 3961-0

F. +43(0)1 489 3961-7

[mail@szabo-scandic.com](mailto:mail@szabo-scandic.com)

[www.szabo-scandic.com](http://www.szabo-scandic.com)

[linkedin.com/company/szaboscandic](https://www.linkedin.com/company/szaboscandic) 

**ELF1 purified MaxPab mouse polyclonal antibody (B01P)** MaxPab®

Catalog # : H00001997-B01P

規格 : [ 50 ug ]

[List All](#)

**Specification**

**Product Description:** Mouse polyclonal antibody raised against a full-length human ELF1 protein.

**Immunogen:** ELF1 (NP\_758961.1, 1 a.a. ~ 619 a.a) full-length human protein.

**Sequence:**  
 MAAVVQQNDLVFEFASNVMEDERQLGDPAIFPAVIVEHVPGADILNSYAG  
 LACVEEPNDMITESSLDVAEEEEIDDDDDDITLVEASCHDGDDETIEIAAE  
 ALLNMDSPGPMLEKRIINNIFSSPEDDMVAPVTHVSVTLDGIPVEMET  
 QQVQEKYADSPGASSPEQPKRKKGRKTKPPRPDSPATTPNISVKKKNKD  
 GKGNTIYLWEFLLALLQDKATCPKYIKWTQREKGIFKLVDSKAVSRLWGK  
 HKNKPDMMNYETMGRALRYYYQRGILAKVEGQRLVYQFKEMPKDLIYINDE  
 DPSSSISSDPSLSSATSNRNQT SRSRVSSSPGVKGGATTVLKPGNSK  
 AAKPKDPVEVAQPSEVLRVQPTQSPYPTQLFRTVHVVPVQAVPEGE  
 AARTSTMQDETLNSSVQSIRTIQAPTQVPVVVSPRNQQLHTVTLQTVPLT  
 TVIASTDPSAGTGSQKFILQAIPSSQPMTVLKENVMLQSQKAGSPPSIVLG  
 PAQVQQVLT SNVQTICNGTVSVASSPSFSATAPVVTFSRSSLVVAHPP  
 GTVITSVIKTQETKLTQEVEKKESEDHLKENTEKTEQQPQPYYMMVSSS  
 NGFTSQVAMKQNELLEPNSF

**Host:** Mouse

**Reactivity:** Human

**Quality Control Testing:** Antibody reactive against mammalian transfected lysate.

**Storage Buffer:** In 1x PBS, pH 7.4

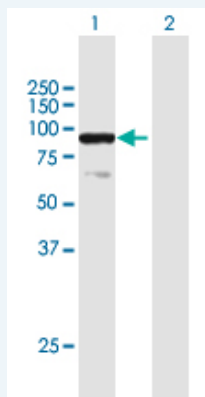
**Storage Instruction:** Store at -20°C or lower. Aliquot to avoid repeated freezing and thawing.

**MSDS:**  [Download](#)

**Datasheet:**  [Download](#)

**Applications**

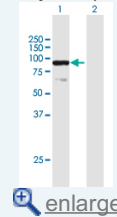
**Western Blot (Transfected lysate)**



Western Blot analysis of ELF1 expression in transfected 293T cell line ([H00001997-T01](#)) by ELF1 MaxPab polyclonal antibody.

**Application Image**

Western Blot (Transfected lysate)



Lane 1: ELF1 transfected lysate(68.09 KDa).  
Lane 2: Non-transfected lysate.

 [Protocol Download](#)

---

### Gene Information

---

**Entrez GeneID:** [1997](#)

**GeneBank  
Accession#:** [NM\\_172373.2](#)

**Protein  
Accession#:** [NP\\_758961.1](#)

**Gene Name:** ELF1

**Gene Alias:** -

**Gene  
Description:** E74-like factor 1 (ets domain transcription factor)

**Omim ID:** [189973](#)

**Gene Ontology:** [Hyperlink](#)

**Gene Summary:** This gene encodes an E26 transformation-specific related transcription factor. The encoded protein is primarily expressed in lymphoid cells and acts as both an enhancer and a repressor to regulate transcription of various genes. Alternative splicing results in multiple transcript variants. [provided by RefSeq]

**Other  
Designations:** OTTHUMP00000018310

---

### Related Disease

---

[Tobacco Use Disorder](#)

---

[服務條款](#) | [隱私權政策](#) | [著作及商標](#) | [網站地圖](#)

©2016 亞諾法生技股份有限公司 Abnova Corporation. 版權所有.