



# SZABO SCANDIC

Part of Europa Biosite

## Produktinformation



Forschungsprodukte & Biochemikalien



Zellkultur & Verbrauchsmaterial



Diagnostik & molekulare Diagnostik



Laborgeräte & Service

Weitere Information auf den folgenden Seiten!  
See the following pages for more information!



### Lieferung & Zahlungsart

siehe unsere [Liefer- und Versandbedingungen](#)

### Zuschläge

- Mindermengenzuschlag
- Trockeneiszuschlag
- Gefahrgutzuschlag
- Expressversand

### SZABO-SCANDIC HandelsgmbH

Quellenstraße 110, A-1100 Wien

T. +43(0)1 489 3961-0

F. +43(0)1 489 3961-7

[mail@szabo-scandic.com](mailto:mail@szabo-scandic.com)

[www.szabo-scandic.com](http://www.szabo-scandic.com)

[linkedin.com/company/szaboscandic](https://www.linkedin.com/company/szaboscandic) 

# ELF2 MaxPab mouse polyclonal antibody (B01) MaxPab®

Catalog # : H00001998-B01

規格 : [ 50 uL ]

[List All](#)

## Specification

**Product Description:** Mouse polyclonal antibody raised against a full-length human ELF2 protein.

**Immunogen:** ELF2 (NP\_973728.1, 1 a.a. ~ 581 a.a) full-length human protein.

**Sequence:**  
 MTSAVVDSGGTILELSSNGVENQEESKVEYPAVIVEPVPSARLEQGYA  
 AQLVYDDETYMMQDVAAEEQEVETENVETVEASVHSSNAHCTDKTIEAA  
 EALLHMESPTCLRDSRSPFIIHAAMRPDVITETVEVSTEESEPMDSPIIP  
 TSPDSHEPMKKKKVGGRPKTQQSPISNGSPELGIKKKPREGKGNNTYLW  
 EFLDLLQDKNTCPRYIKWTQREKGFILVDSKAVSKLWGKHKNKPDMMN  
 YETMGRALRYYYQRGILAKVEGQRLVYQFKDMPKNIVIDDDKSETCNE  
 DLAGTTDEKSLERVSLSAESLLKAASSVRSKGNSSPINCRAEKGVARVV  
 NITSPGHDASSRSPTTTASVSATAAPRTVRVAMQVPVWMTSLGQKISTVA  
 VQSVNAGAPLITSTPTTATSPKVVIQTIPTVMPASTENGDKITMQPAKIITI  
 PATQLAQQLQTKSNLTGSGSINIVGTPLAVRALTPVSI AHGTPVMRLSM  
 PTQQASGQTPPRVISAVIKGPEVKSEAVAKKQEHDVKTLLQVVEEKPADG  
 NKTVTHTVVV/SAPSAIALPVTMKTEGLVTCEK

**Host:** Mouse

**Reactivity:** Human

**Quality Control Testing:** Antibody reactive against mammalian transfected lysate.

**Storage Buffer:** No additive

**Storage Instruction:** Store at -20°C or lower. Aliquot to avoid repeated freezing and thawing.

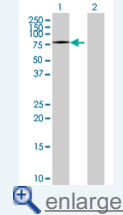
**Note:** For IHC and IF applications, antibody purification with Protein A will be needed prior to use.

**MSDS:**  [Download](#)

**Datasheet:**  [Download](#)

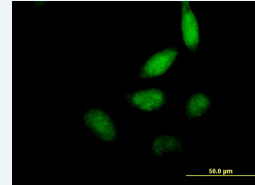
## Application Image

Western Blot (Transfected lysate)



 [enlarge](#)

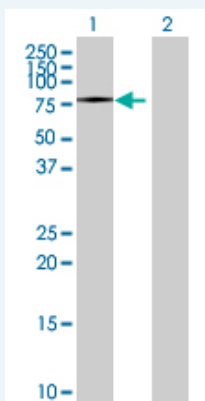
Immunofluorescence



 [enlarge](#)

## Applications

Western Blot (Transfected lysate)

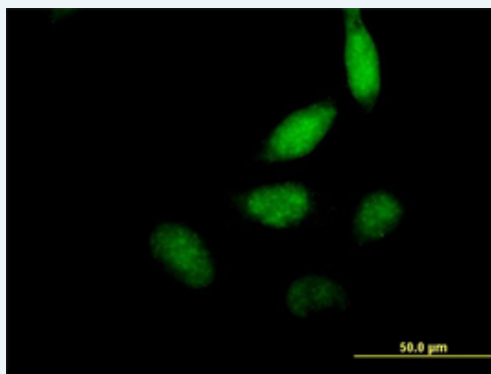



Western Blot analysis of ELF2 expression in transfected 293T cell line ([H00001998-T01](#)) by ELF2 MaxPab polyclonal antibody.

Lane 1: ELF2 transfected lysate(63.91 KDa).  
Lane 2: Non-transfected lysate.

 [Protocol Download](#)

### Immunofluorescence



 [enlarge this image](#)

Immunofluorescence of [purified](#) MaxPab antibody to ELF2 on HeLa cell. [antibody concentration 10 ug/ml]

 [Protocol Download](#)

### Gene Information

**Entrez GeneID:** [1998](#)

**GeneBank  
Accession#:** [NM\\_201999.1](#)

**Protein  
Accession#:** [NP\\_973728.1](#)

**Gene Name:** ELF2

**Gene Alias:** EU32,NERF,NERF-1A,NERF-1B,NERF-1a,b,NERF-2

**Gene  
Description:** E74-like factor 2 (ets domain transcription factor)

**Gene Ontology:** [Hyperlink](#)

**Other  
Designations:** OTTHUMP00000164540,ets family transcription factor ELF2C,new Ets-related factor

### Related Disease

[Hepatitis B](#)

[服務條款](#) | [隱私權政策](#) | [著作及商標](#) | [網站地圖](#)

©2016 亞諾法生技股份有限公司 Abnova Corporation. 版權所有.