



SZABO SCANDIC

Part of Europa Biosite

Produktinformation



Forschungsprodukte & Biochemikalien



Zellkultur & Verbrauchsmaterial



Diagnostik & molekulare Diagnostik



Laborgeräte & Service

Weitere Information auf den folgenden Seiten!
See the following pages for more information!



Lieferung & Zahlungsart

siehe unsere [Liefer- und Versandbedingungen](#)

Zuschläge

- Mindermengenzuschlag
- Trockeneiszuschlag
- Gefahrgutzuschlag
- Expressversand

SZABO-SCANDIC HandelsgmbH

Quellenstraße 110, A-1100 Wien

T. +43(0)1 489 3961-0

F. +43(0)1 489 3961-7

mail@szabo-scandic.com

www.szabo-scandic.com

[linkedin.com/company/szaboscandic](https://www.linkedin.com/company/szaboscandic) 

ELF2 purified MaxPab mouse polyclonal antibody (B01P) MaxPab®

Catalog # : H00001998-B01P

規格 : [50 ug]

[List All](#)

Specification

Product Description: Mouse polyclonal antibody raised against a full-length human ELF2 protein.

Immunogen: ELF2 (NP_973728.1, 1 a.a. ~ 581 a.a) full-length human protein.

Sequence:
 MTSAVVDSGGTILELSSNGVENQEESKVEYPAVIVEPVPSARLEQGYA
 AQLVYDDETYMMQDVAAEEQEVETENVETVEASVHSSNAHCTDKTIEAA
 EALLHMESPTCLRDSRSPFIIHAAMRPDVITETVEVSTEESEPMDTSPII
 TSPDSHEPMKKKKVGRKPKTQQSPISNGSPELGIKKKPREGKGNYYLW
 EFLDLLQDKNTCPRYIKWTQREKGFILVDSKAVSKLWGKHKNKPDMM
 YETMGRALRYYYQRGILAKVEGQRLVYQFKDMPKNIVIDDDKSETCNE
 DLAGTTDEKSLERVSLAESLLKAASSVRSGKNSSPINCRAEKGVARVV
 NITSPGHDASSRSPTTTASVSATAAPRTVRVAMQVPVWMTSLGQKISTVA
 VQSVNAGAPLITSTPTTATSPKVVIQTIPTVMPASTENGDKITMQPAKIIT
 PATQLAQQLQTKSNLTGSGSINIVGTPLAVRALTPVSIHGTTPVMRLSM
 PTQQASGQTPPRVISAVIKGPEVKSEAVAKKQEHDVKTLLQVVEEKPADG
 NKTVTHVVVVSAPSAIALPVTMKTEGLVTCEK

Host: Mouse

Reactivity: Human

Quality Control Testing: Antibody reactive against mammalian transfected lysate.

Storage Buffer: In 1x PBS, pH 7.4

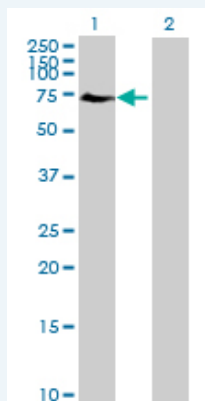
Storage Instruction: Store at -20°C or lower. Aliquot to avoid repeated freezing and thawing.

MSDS:  [Download](#)

Datasheet:  [Download](#)

Applications

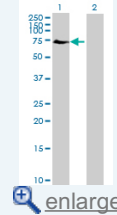
Western Blot (Transfected lysate)



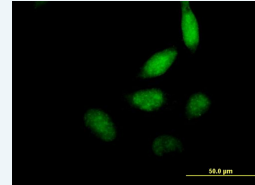
Western Blot analysis of ELF2 expression in transfected 293T cell line (H00001998-T01) by ELF2 MaxPab polyclonal antibody.

Application Image

Western Blot (Transfected lysate)



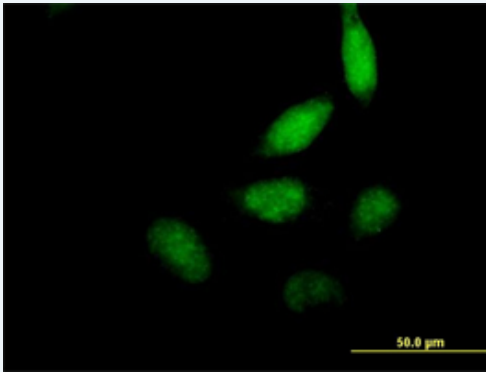
Immunofluorescence




Lane 1: ELF2 transfected lysate(63.91 KDa).
Lane 2: Non-transfected lysate.

 [Protocol Download](#)

Immunofluorescence



 [enlarge this image](#)

Immunofluorescence of purified MaxPab antibody to ELF2 on HeLa cell. [antibody concentration 10 ug/ml]

 [Protocol Download](#)

Gene Information

Entrez GeneID: [1998](#)

**GeneBank
Accession#:** [NM_201999.1](#)

**Protein
Accession#:** [NP_973728.1](#)

Gene Name: ELF2

Gene Alias: EU32,NERF,NERF-1A,NERF-1B,NERF-1a,b,NERF-2

**Gene
Description:** E74-like factor 2 (ets domain transcription factor)

Gene Ontology: [Hyperlink](#)

**Other
Designations:** OTTHUMP00000164540,ets family transcription factor ELF2C,new Ets-related factor

Related Disease

[Hepatitis B](#)

[服務條款](#) | [隱私權政策](#) | [著作及商標](#) | [網站地圖](#)

©2016 亞諾法生技股份有限公司 Abnova Corporation. 版權所有.