



SZABO SCANDIC

Part of Europa Biosite

Produktinformation



Forschungsprodukte & Biochemikalien



Zellkultur & Verbrauchsmaterial



Diagnostik & molekulare Diagnostik



Laborgeräte & Service

Weitere Information auf den folgenden Seiten!
See the following pages for more information!



Lieferung & Zahlungsart

siehe unsere [Liefer- und Versandbedingungen](#)

Zuschläge

- Mindermengenzuschlag
- Trockeneiszuschlag
- Gefahrgutzuschlag
- Expressversand

SZABO-SCANDIC HandelsgmbH

Quellenstraße 110, A-1100 Wien

T. +43(0)1 489 3961-0

F. +43(0)1 489 3961-7

mail@szabo-scandic.com

www.szabo-scandic.com

[linkedin.com/company/szaboscandic](https://www.linkedin.com/company/szaboscandic) 

ELK1 monoclonal antibody (M01), clone 2G6

Catalog # : H00002002-M01

規格 : [100 ug]

[List All](#)

Specification

Product Description: Mouse monoclonal antibody raised against a partial recombinant ELK1.

Immunogen: ELK1 (NP_005220, 67 a.a. ~ 166 a.a) partial recombinant protein with GST tag. MW of the GST tag alone is 26 KDa.

Sequence: YYDKNIIRKVSQGQKFVYKFSYPEVAGCSTEDCPPQPEVSVTSTMPNVAPAAIHAAPGDTVSGKPGTPKGAGMAGPGGLARSSRNEYMRSGLYSTFTIQS

Host: Mouse

Reactivity: Human

Isotype: IgG2a Kappa

Quality Control Testing: Antibody Reactive Against Recombinant Protein.

Storage Buffer: In 1x PBS, pH 7.4

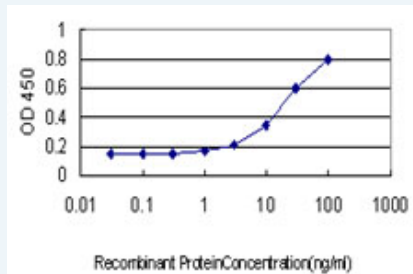
Storage Instruction: Store at -20°C or lower. Aliquot to avoid repeated freezing and thawing.

MSDS:  [Download](#)


Datasheet:  [Download](#)

Applications

Sandwich ELISA (Recombinant protein)



Detection limit for recombinant GST tagged ELK1 is approximately 1ng/ml as a capture antibody.

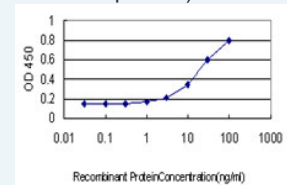
 [Protocol Download](#)


ELISA

In situ Proximity Ligation Assay (Cell)

Application Image

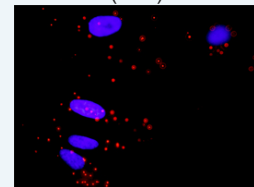
Sandwich ELISA (Recombinant protein)




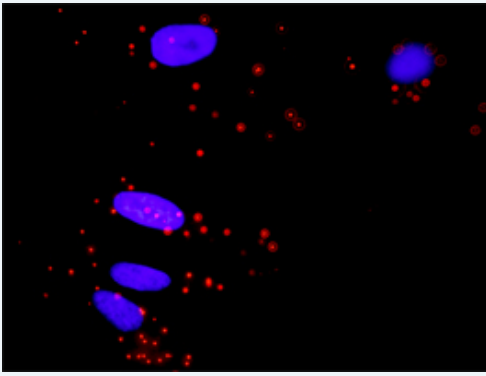
 [enlarge](#)

ELISA

In situ Proximity Ligation Assay (Cell)



 [enlarge](#)



Proximity Ligation Analysis of protein-protein interactions between MAPK3 and ELK1. HeLa cells were stained with anti-MAPK3 rabbit purified polyclonal 1:1200 and anti-ELK1 mouse monoclonal antibody 1:50. Each red dot represents the detection of protein-protein interaction complex, and nuclei were counterstained with DAPI (blue).

Gene Information

Entrez GeneID: [2002](#)

GeneBank Accession#: [NM_005229](#)

Protein Accession#: [NP_005220](#)

Gene Name: ELK1

Gene Alias: -

Gene Description: ELK1, member of ETS oncogene family

Omim ID: [311040](#)

Gene Ontology: [Hyperlink](#)

Gene Summary: This gene is a member of the Ets family of transcription factors and of the ternary complex factor (TCF) subfamily. Proteins of the TCF subfamily form a ternary complex by binding to the the serum response factor and the serum reponse element in the promoter of the c-fos proto-oncogene. The protein encoded by this gene is a nuclear target for the ras-raf-MAPK signaling cascade. Alternatively spliced transcript variants encoding the same protein have been found for this gene. [provided by RefSeq]

Other Designations: ELK1 protein, OTTHUMP00000023224, OTTHUMP00000023225

Gene Pathway

[Endometrial cancer](#) [ErbB signaling pathway](#) [Focal adhesion](#) [GnRH signaling pathway](#) [Insulin signaling pathway](#) [MAPK signaling pathway](#) [Prion diseases](#)

Related Disease

[Cardiovascular Diseases](#) [Diabetes Mellitus, Type 2](#) [Edema](#)