



SZABO SCANDIC

Part of Europa Biosite

Produktinformation



Forschungsprodukte & Biochemikalien



Zellkultur & Verbrauchsmaterial



Diagnostik & molekulare Diagnostik



Laborgeräte & Service

Weitere Information auf den folgenden Seiten!
See the following pages for more information!



Lieferung & Zahlungsart

siehe unsere [Liefer- und Versandbedingungen](#)

Zuschläge

- Mindermengenzuschlag
- Trockeneiszuschlag
- Gefahrgutzuschlag
- Expressversand

SZABO-SCANDIC HandelsgmbH

Quellenstraße 110, A-1100 Wien

T. +43(0)1 489 3961-0

F. +43(0)1 489 3961-7

mail@szabo-scandic.com

www.szabo-scandic.com

[linkedin.com/company/szaboscandic](https://www.linkedin.com/company/szaboscandic) 

ELK3 293T Cell Transient Overexpression Lysate(Denatured)

Catalog # : H00002004-T01

規格 : [100 uL]

List All

Specification

Transfected Cell Line: 293T

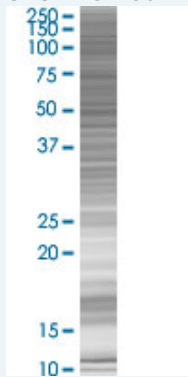
Plasmid: pCMV-ELK3 full-length

Host: Human

Theoretical MW (kDa): 44.88

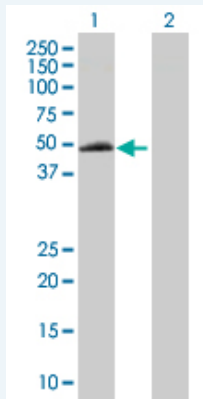
Quality Control Testing: Transient overexpression cell lysate was tested with Anti-ELK3 antibody (H00002004-B01) by Western Blots.

SDS-PAGE Gel



ELK3 transfected lysate.

Western Blot



Lane 1: ELK3 transfected lysate (44.88 KDa)

Lane 2: Non-transfected lysate.

Storage Buffer: 1X Sample Buffer (50 mM Tris-HCl, 2% SDS, 10% glycerol, 300 mM 2-mercaptoethanol, 0.01% Bromophenol blue)

Storage Instruction: Store at -80°C. Aliquot to avoid repeated freezing and thawing.

MSDS:  [Download](#)

Applications

Western Blot

Gene Information

Entrez GeneID: [2004](#)

GeneBank Accession#: [NM_005230.2](#)

Protein Accession#: =

Gene Name: ELK3

Gene Alias: ERP,NET,SAP2

Gene Description: ELK3, ETS-domain protein (SRF accessory protein 2)

Omim ID: [600247](#)

Gene Ontology: [Hyperlink](#)

Gene Summary: The protein encoded by this gene is a member of the ETS-domain transcription factor family and the ternary complex factor (TCF) subfamily. Proteins in this subfamily regulate transcription when recruited by serum response factor to bind to serum response elements. This protein is activated by signal-induced phosphorylation; studies in rodents suggest that it is a transcriptional inhibitor in the absence of Ras, but activates transcription when Ras is present. [provided by RefSeq]

Other Designations: ELK3 protein,ETS-domain protein,SRF accessory protein 2

Related Disease

[Tobacco Use Disorder](#)