



# SZABO SCANDIC

Part of Europa Biosite

## Produktinformation



Forschungsprodukte & Biochemikalien



Zellkultur & Verbrauchsmaterial



Diagnostik & molekulare Diagnostik



Laborgeräte & Service

Weitere Information auf den folgenden Seiten!  
See the following pages for more information!



### Lieferung & Zahlungsart

siehe unsere [Liefer- und Versandbedingungen](#)

### Zuschläge

- Mindermengenzuschlag
- Trockeneiszuschlag
- Gefahrgutzuschlag
- Expressversand

### SZABO-SCANDIC HandelsgmbH

Quellenstraße 110, A-1100 Wien

T. +43(0)1 489 3961-0

F. +43(0)1 489 3961-7

[mail@szabo-scandic.com](mailto:mail@szabo-scandic.com)

[www.szabo-scandic.com](http://www.szabo-scandic.com)

[linkedin.com/company/szaboscandic](https://www.linkedin.com/company/szaboscandic) 

## ELK4 293T Cell Transient Overexpression Lysate(Denatured)

Catalog # : H00002005-T03

規格 : [ 100 uL ]

[List All](#)

### Specification

**Transfected Cell Line:** 293T

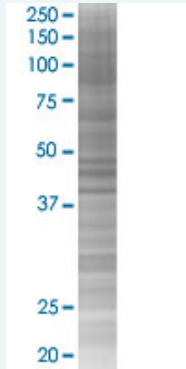
**Plasmid:** pCMV-ELK4 full-length

**Host:** Human

**Theoretical MW (kDa):** 44.7

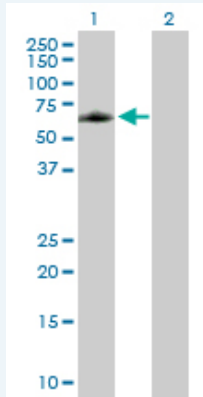
**Quality Control Testing:** Transient overexpression cell lysate was tested with Anti-ELK4 antibody (H00002005-B01P) by Western Blots.

#### SDS-PAGE Gel



ELK4 transfected lysate.

#### Western Blot



Lane 1: ELK4 transfected lysate ( 44.70 KDa)

Lane 2: Non-transfected lysate.

**Storage Buffer:** 1X Sample Buffer (50 mM Tris-HCl, 2% SDS, 10% glycerol, 300 mM 2-mercaptoethanol, 0.01% Bromophenol blue)

**Storage Instruction:** Store at -80°C. Aliquot to avoid repeated freezing and thawing.

**MSDS:**  [Download](#)

### Applications

## Western Blot

### Gene Information

Entrez GeneID: [2005](#)

GeneBank Accession#: [NM\\_021795.2](#)

Protein Accession#: [NP\\_068567.1](#)

Gene Name: ELK4

Gene Alias: SAP1

Gene Description: ELK4, ETS-domain protein (SRF accessory protein 1)

Omim ID: [600246](#)

Gene Ontology: [Hyperlink](#)

**Gene Summary:** This gene is a member of the Ets family of transcription factors and of the ternary complex factor (TCF) subfamily. Proteins of the TCF subfamily form a ternary complex by binding to the the serum response factor and the serum reponse element in the promoter of the c-fos proto-oncogene. The protein encoded by this gene is phosphorylated by the kinases, MAPK1 and MAPK8. Several transcript variants have been described for this gene. [provided by RefSeq]

**Other Designations:** ELK4 protein,ETS-domain protein,OTTHUMP00000035339,SRF accessory protein 1

### Gene Pathway

[MAPK signaling pathway](#)

[服務條款](#) | [隱私權政策](#) | [著作及商標](#) | [網站地圖](#)

©2016 亞諾法生技股份有限公司 Abnova Corporation. 版權所有.