



SZABO SCANDIC

Part of Europa Biosite

Produktinformation



Forschungsprodukte & Biochemikalien



Zellkultur & Verbrauchsmaterial



Diagnostik & molekulare Diagnostik



Laborgeräte & Service

Weitere Information auf den folgenden Seiten!
See the following pages for more information!



Lieferung & Zahlungsart

siehe unsere [Liefer- und Versandbedingungen](#)

Zuschläge

- Mindermengenzuschlag
- Trockeneiszuschlag
- Gefahrgutzuschlag
- Expressversand

SZABO-SCANDIC HandelsgmbH

Quellenstraße 110, A-1100 Wien

T. +43(0)1 489 3961-0

F. +43(0)1 489 3961-7

mail@szabo-scandic.com

www.szabo-scandic.com

[linkedin.com/company/szaboscandic](https://www.linkedin.com/company/szaboscandic) 

ELN purified MaxPab rabbit polyclonal antibody (D01P) MaxPab®

Catalog # : H00002006-D01P

規格 : [100 ug]

[List All](#)

Specification

Product Description: Rabbit polyclonal antibody raised against a full-length human ELN protein.

Immunogen: ELN (AAH65566.1, 1 a.a. ~ 658 a.a) full-length human protein.

Sequence:
 MAGLTAAPRPGVLLLLLSILHPSRPGGVPGAIPGGVPGGVFYPGAGLG
 ALGGGALGPGGKPLKVPGGLAGAGLGAGLGAFPAVTFPGALVPGGV
 ADAAAAYKAAKAGAGLGGVPGVGGGLGVSAGAVWPQPGAGVKPGKVP
 VGLPGVYPPGGVLPGARFPGVGVLPVPTGAGVKPKAPGVGGAFAGIPG
 VGFPGGPGVPLGYPIKAPKLPGYGPGGVAGAAGKAGYPTGTGVGP
 QAAAAAAAAKAAAFGAGAAGVLPVGGGAGVPGVPGAIPGIGGIAGVGT
 PAAAAAAAAAKAAKYGAAAGLVGGPGFGPGVGVPGAGVPGVGVPG
 AGIPVVPAGIPGAAPVGVWSPEAAAKAAAKAAKYGARPGVGVGGIPTY
 GVGAGGFPFGVGVGGIPGVAGVPSVGGVPGVGGVPGVGVISPEAQAA
 AAKAAKYGLVPGVGVAPGVGVAPGVGVAPGVGLAPGVGVAPGVGVA
 PGVGVAPGIGPGGVAGAAAGLGAGIPGLGVGVGPGLGVGAGVPLG
 VGAGVPGFRAVPGALAAAKAAKYGAAVPGVLGGLGALGGVGPVGGV
 AGPAAAAAAAAAKAAQAQFGLVGAAGLGLGVGGVPGVGGVGGVGGIP
 PAAAAAAAAKYGVAAARPGFGLSPIFPGGACLGKACGRKRK

Host: Rabbit

Reactivity: Human

Quality Control Testing: Antibody reactive against mammalian transfected lysate.

Storage Buffer: In 1x PBS, pH 7.4

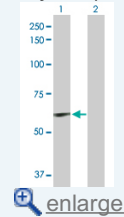
Storage Instruction: Store at -20°C or lower. Aliquot to avoid repeated freezing and thawing.

MSDS:  [Download](#)

Datasheet:  [Download](#)

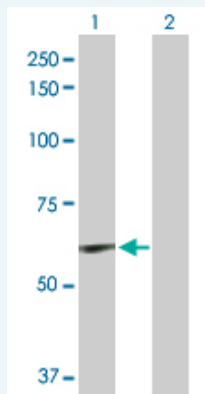
Application Image

Western Blot (Transfected lysate)



Applications

Western Blot (Transfected lysate)



Western Blot analysis of ELN expression in transfected 293T cell line (H00002006-T02) by

ELN MaxPab polyclonal antibody.

Lane 1: ELN transfected lysate(56.70 KDa).

Lane 2: Non-transfected lysate.

 [Protocol Download](#)

Gene Information

Entrez GeneID: [2006](#)

GeneBank [BC065566.1](#)

Accession#:

Protein [AAH65566.1](#)

Accession#:

Gene Name: ELN

Gene Alias: FLJ38671,FLJ43523,SVAS,WBS,WS

Gene elastin

Description:

Omim ID: [123700](#), [130160](#), [185500](#)

Gene Ontology: [Hyperlink](#)

Gene Summary: This gene encodes a protein that is one of the two components of elastic fibers. The encoded protein is rich in hydrophobic amino acids such as glycine and proline, which form mobile hydrophobic regions bounded by crosslinks between lysine residues. Deletions and mutations in this gene are associated with supravalvular aortic stenosis (SVAS) and autosomal dominant cutis laxa. Multiple transcript variants encoding different isoforms have been found for this gene. [provided by RefSeq]

Other OTTHUMP00000196667,tropoelastin

Designations:

Related Disease

[Alzheimer Disease](#) [Alzheimer disease](#) [Aneurysm, Ruptured](#) [Aortic Aneurysm, Abdominal](#)
[Atherosclerosis](#) [Calcinosis](#) [Cardiovascular Diseases](#) [Chorioamnionitis](#)
[Choroidal Neovascularization](#) [Coronary Artery Disease](#) [Diabetes Complications](#)
[Diabetes Mellitus, Type 2](#) [Ductus Arteriosus, Patent](#) [Edema](#) [Emphysema](#)
[Exfoliation Syndrome](#) [Fetal Membranes, Premature Rupture](#)
[Genetic Predisposition to Disease](#) [Glaucoma](#)

... see more

[服務條款](#) | [隱私權政策](#) | [著作及商標](#) | [網站地圖](#)

©2016 亞諾法生技股份有限公司 Abnova Corporation. 版權所有.