



SZABO SCANDIC

Part of Europa Biosite

Produktinformation



Forschungsprodukte & Biochemikalien



Zellkultur & Verbrauchsmaterial



Diagnostik & molekulare Diagnostik



Laborgeräte & Service

Weitere Information auf den folgenden Seiten!
See the following pages for more information!



Lieferung & Zahlungsart

siehe unsere [Liefer- und Versandbedingungen](#)

Zuschläge

- Mindermengenzuschlag
- Trockeneiszuschlag
- Gefahrgutzuschlag
- Expressversand

SZABO-SCANDIC HandelsgmbH

Quellenstraße 110, A-1100 Wien

T. +43(0)1 489 3961-0

F. +43(0)1 489 3961-7

mail@szabo-scandic.com

www.szabo-scandic.com

[linkedin.com/company/szaboscandic](https://www.linkedin.com/company/szaboscandic) 

ELN (Human) IP-WB Antibody Pair

Catalog # : H00002006-PW1

規格 : [1 Set]

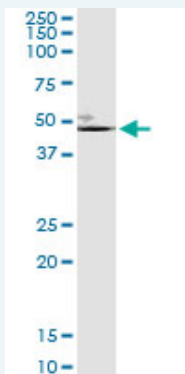
List All

Specification

Product Description: This IP-WB antibody pair set comes with one antibody for immunoprecipitation and another to detect the precipitated protein in western blot.

Reactivity: Human

Quality Control Testing: Immunoprecipitation-Western Blot (IP-WB)



Immunoprecipitation of ELN transfected lysate using rabbit polyclonal anti-ELN and Protein A Magnetic Bead ([U0007](#)), and immunoblotted with mouse purified polyclonal anti-ELN.

Supplied Product: Antibody pair set content:
 1. Antibody pair for IP: rabbit polyclonal anti-ELN (300 ul)
 2. Antibody pair for WB: mouse purified polyclonal anti-ELN (50 ug)

Storage Instruction: Store reagents of the antibody pair set at -20°C or lower. Please aliquot to avoid repeated freeze thaw cycle. Reagents should be returned to -20°C storage immediately after use.

MSDS:  [Download](#)

Applications

Immunoprecipitation-Western Blot

 [Protocol Download](#)

Gene Information

Entrez GeneID: [2006](#)

Gene Name: ELN

Gene Alias: FLJ38671, FLJ43523, SVAS, WBS, WS

Gene Description: elastin

Omim ID: [123700](#), [130160](#), [185500](#)

Gene Ontology: [Hyperlink](#)

Application Image

Immunoprecipitation-Western Blot

Gene Summary: This gene encodes a protein that is one of the two components of elastic fibers. The encoded protein is rich in hydrophobic amino acids such as glycine and proline, which form mobile hydrophobic regions bounded by crosslinks between lysine residues. Deletions and mutations in this gene are associated with supravalvular aortic stenosis (SVAS) and autosomal dominant cutis laxa. Multiple transcript variants encoding different isoforms have been found for this gene. [provided by RefSeq]

Other OTTHUMP00000196667,tropoelastin
Designations:

Related Disease

[Alzheimer Disease](#) [Alzheimer disease](#) [Aneurysm, Ruptured](#) [Aortic Aneurysm, Abdominal](#) [Atherosclerosis](#) [Calcinosis](#) [Cardiovascular Diseases](#) [Chorioamnionitis](#) [Choroidal Neovascularization](#) [Coronary Artery Disease](#) [Diabetes Complications](#) [Diabetes Mellitus, Type 2](#) [Ductus Arteriosus, Patent](#) [Edema](#) [Emphysema](#) [Exfoliation Syndrome](#) [Fetal Membranes, Premature Rupture](#) [Genetic Predisposition to Disease](#) [Glaucoma](#)

... see more

[服務條款](#) | [隱私權政策](#) | [著作及商標](#) | [網站地圖](#)

©2016 亞諾法生技股份有限公司 Abnova Corporation. 版權所有.