



# SZABO SCANDIC

Part of Europa Biosite

## Produktinformation



Forschungsprodukte & Biochemikalien



Zellkultur & Verbrauchsmaterial



Diagnostik & molekulare Diagnostik



Laborgeräte & Service

Weitere Information auf den folgenden Seiten!  
See the following pages for more information!



### Lieferung & Zahlungsart

siehe unsere [Liefer- und Versandbedingungen](#)

### Zuschläge

- Mindermengenzuschlag
- Trockeneiszuschlag
- Gefahrgutzuschlag
- Expressversand

### SZABO-SCANDIC HandelsgmbH

Quellenstraße 110, A-1100 Wien

T. +43(0)1 489 3961-0

F. +43(0)1 489 3961-7

[mail@szabo-scandic.com](mailto:mail@szabo-scandic.com)

[www.szabo-scandic.com](http://www.szabo-scandic.com)

[linkedin.com/company/szaboscandic](https://www.linkedin.com/company/szaboscandic) 

## ELN 293T Cell Transient Overexpression Lysate(Denatured)

Catalog # : H00002006-T01

規格 : [ 100 uL ]

[List All](#)

### Specification

**Transfected Cell Line:** 293T

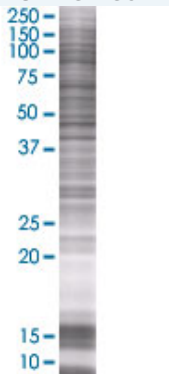
**Plasmid:** pCMV-ELN full-length

**Host:** Human

**Theoretical MW (kDa):** 72.49

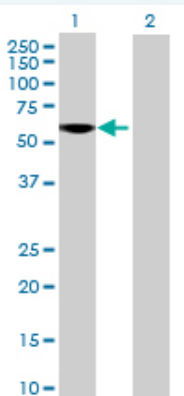
**Quality Control Testing:** Transient overexpression cell lysate was tested with Anti-ELN antibody (H00002006-B01) by Western Blots.

#### SDS-PAGE Gel



ELN transfected lysate.

#### Western Blot



Lane 1: ELN transfected lysate ( 72.49 KDa)

Lane 2: Non-transfected lysate.

**Storage Buffer:** 1X Sample Buffer (50 mM Tris-HCl, 2% SDS, 10% glycerol, 300 mM 2-mercaptoethanol, 0.01% Bromophenol blue)

**Storage Instruction:** Store at -80°C. Aliquot to avoid repeated freezing and thawing.

**MSDS:**  [Download](#)

### Applications

### Application Image

Western Blot

## Western Blot

### Gene Information

Entrez GeneID: [2006](#)

GeneBank [BC065566.1](#)  
Accession#:

Protein [AAH65566.1](#)  
Accession#:

Gene Name: ELN

Gene Alias: FLJ38671,FLJ43523,SVAS,WBS,WS

Gene  
Description: elastin

Omim ID: [123700](#), [130160](#), [185500](#)

Gene Ontology: [Hyperlink](#)

**Gene Summary:** This gene encodes a protein that is one of the two components of elastic fibers. The encoded protein is rich in hydrophobic amino acids such as glycine and proline, which form mobile hydrophobic regions bounded by crosslinks between lysine residues. Deletions and mutations in this gene are associated with supraaortic stenosis (SVAS) and autosomal dominant cutis laxa. Multiple transcript variants encoding different isoforms have been found for this gene. [provided by RefSeq]

Other  
Designations: OTTHUMP00000196667,tropoelastin

### Related Disease

[Alzheimer Disease](#) [Alzheimer disease](#) [Aneurysm, Ruptured](#) [Aortic Aneurysm, Abdominal](#)  
[Atherosclerosis](#) [Calcinosis](#) [Cardiovascular Diseases](#) [Chorioamnionitis](#)  
[Choroidal Neovascularization](#) [Coronary Artery Disease](#) [Diabetes Complications](#)  
[Diabetes Mellitus, Type 2](#) [Ductus Arteriosus, Patent](#) [Edema](#) [Emphysema](#)  
[Exfoliation Syndrome](#) [Fetal Membranes, Premature Rupture](#)  
[Genetic Predisposition to Disease](#) [Glaucoma](#)

... see more