



SZABO SCANDIC

Part of Europa Biosite

Produktinformation



Forschungsprodukte & Biochemikalien



Zellkultur & Verbrauchsmaterial



Diagnostik & molekulare Diagnostik



Laborgeräte & Service

Weitere Information auf den folgenden Seiten!
See the following pages for more information!



Lieferung & Zahlungsart

siehe unsere [Liefer- und Versandbedingungen](#)

Zuschläge

- Mindermengenzuschlag
- Trockeneiszuschlag
- Gefahrgutzuschlag
- Expressversand

SZABO-SCANDIC HandelsgmbH

Quellenstraße 110, A-1100 Wien

T. +43(0)1 489 3961-0

F. +43(0)1 489 3961-7

mail@szabo-scandic.com

www.szabo-scandic.com

[linkedin.com/company/szaboscandic](https://www.linkedin.com/company/szaboscandic) 

EMD MaxPab mouse polyclonal antibody (B01) MaxPab®

Catalog # : H00002010-B01

規格 : [50 uL]

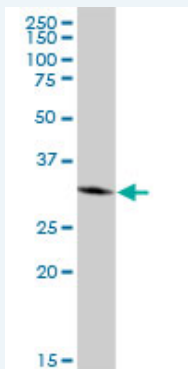
[List All](#)

Specification

Product Description:	Mouse polyclonal antibody raised against a full-length human EMD protein.
Immunogen:	EMD (AAH00738, 1 a.a. ~ 254 a.a) full-length human protein.
Sequence:	MDNYADLSDELTTLLRRYNIPHGPPVVGSTRRLYEKKIFEYETQRRRLSP PSSSAASSYSFSDLNSTRGDADMYDLPKKEDALLYQSKGYNDYYEESY FTTRTYGEPESAGPSRAVRQSVTSFPDADAFHHQVHDDDLLSSSEEEEC KDRERPMyGRDSAYQSIHYRPVSASRSLDLSYYPTSSSTSFMSSSSS SSSWLTRRAIRPENRAPGAGLGQDRQVPLWGQLLFLVFVILFFIYHFM QAEENPF
Host:	Mouse
Reactivity:	Human
Quality Control Testing:	Antibody reactive against mammalian transfected lysate.
Storage Buffer:	No additive
Storage Instruction:	Store at -20°C or lower. Aliquot to avoid repeated freezing and thawing.
Note:	For IHC and IF applications, antibody purification with Protein A will be needed prior to use.
MSDS:	Download
Datasheet:	Download

Applications

Western Blot (Cell lysate)



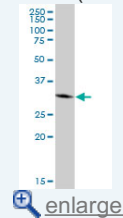
EMD MaxPab polyclonal antibody. Western Blot analysis of EMD expression in 293.

[Protocol Download](#)

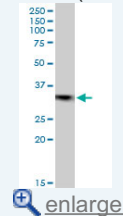
Western Blot (Cell lysate)

Application Image

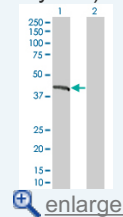
Western Blot (Cell lysate)



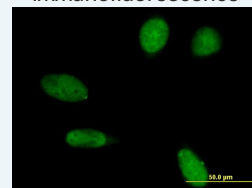
Western Blot (Cell lysate)



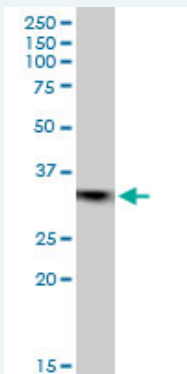
Western Blot (Transfected lysate)



Immunofluorescence



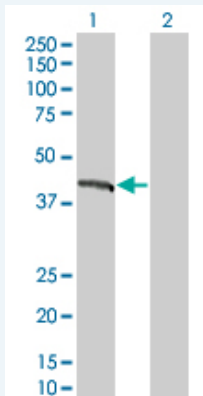
[enlarge](#)



EMD MaxPab polyclonal antibody. Western Blot analysis of EMD expression in MCF-7.

[Protocol Download](#)

Western Blot (Transfected lysate)



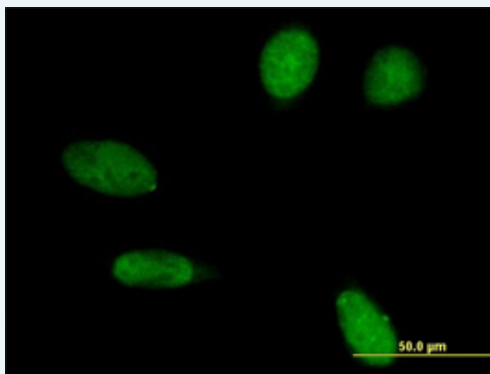
Western Blot analysis of EMD expression in transfected 293T cell line (H00002010-T01) by EMD MaxPab polyclonal antibody.

Lane 1: EMD transfected lysate(27.94 kDa).

Lane 2: Non-transfected lysate.

[Protocol Download](#)

Immunofluorescence



[enlarge this image](#)

Immunofluorescence of purified MaxPab antibody to EMD on HeLa cell. [antibody concentration 10 ug/ml]

[Protocol Download](#)

Gene Information

Entrez GeneID: [2010](#)

GeneBank [BC000738](#)

Accession#:

Protein [AAH00738](#)

Accession#:

Gene Name: EMD

Gene Alias: EDMD,LEMD5,STA

Gene emerin

Description:

Omim ID: [300384](#), [310300](#)

Gene Ontology: [Hyperlink](#)

Gene Summary: Emerin is a serine-rich nuclear membrane protein and a member of the nuclear lamina-associated protein family. It mediates membrane anchorage to the cytoskeleton. Dreifuss-Emery muscular dystrophy is an X-linked inherited degenerative myopathy resulting from mutation in the emerin gene. [provided by RefSeq]

Other LEM domain containing

Designations: 5,OTTHUMP00000031938,OTTHUMP00000061687

Gene Pathway

[Arrhythmogenic right ventricular cardiomyopathy \(ARVC\)](#)

[Hypertrophic cardiomyopathy \(HCM\)](#)

Related Disease

[Cardiomyopathy, Dilated](#) [Cardiovascular Diseases](#) [Diabetes Mellitus, Type 2](#) [Edema](#)

[服務條款](#) | [隱私權政策](#) | [著作及商標](#) | [網站地圖](#)

©2016 亞諾法生技股份有限公司 Abnova Corporation. 版權所有.