



SZABO SCANDIC

Part of Europa Biosite

Produktinformation



Forschungsprodukte & Biochemikalien



Zellkultur & Verbrauchsmaterial



Diagnostik & molekulare Diagnostik



Laborgeräte & Service

Weitere Information auf den folgenden Seiten!
See the following pages for more information!



Lieferung & Zahlungsart

siehe unsere [Liefer- und Versandbedingungen](#)

Zuschläge

- Mindermengenzuschlag
- Trockeneiszuschlag
- Gefahrgutzuschlag
- Expressversand

SZABO-SCANDIC HandelsgmbH

Quellenstraße 110, A-1100 Wien

T. +43(0)1 489 3961-0

F. +43(0)1 489 3961-7

mail@szabo-scandic.com

www.szabo-scandic.com

[linkedin.com/company/szaboscandic](https://www.linkedin.com/company/szaboscandic) 



EMD purified MaxPab mouse polyclonal antibody (B01P) MaxPab®

Catalog # : H00002010-B01P

規格 : [50 ug]

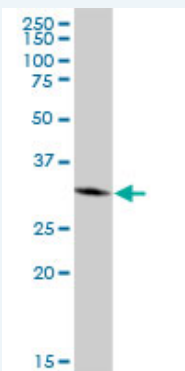
[List All](#)

Specification

Product Description:	Mouse polyclonal antibody raised against a full-length human EMD protein.
Immunogen:	EMD (AAH00738, 1 a.a. ~ 254 a.a) full-length human protein.
Sequence:	MDNYADLSDTELTLLRRYNIPHGPPVVGSTRRLYEKKIFEYETQRRRLSP PSSSAASSYSFSDLNSTRGDADMYDLPKKEDALLYQSKGYNDYYEESY FTTRTYGEPESAGPSRAVRQSVTSFPDADAFHHQVHDDDLLSSSEEEEC KDRERP MYGRDSAYQSITHYRPVSASRSLDLSYPTSSSTSFMSSSSS SSSWLTRRAIRPENRAPGAGLGQDRQVPLWGQLLFLVFVILFFIYHFM QAEEGNPF
Host:	Mouse
Reactivity:	Human
Quality Control Testing:	Antibody reactive against mammalian transfected lysate.
Storage Buffer:	In 1x PBS, pH 7.4
Storage Instruction:	Store at -20°C or lower. Aliquot to avoid repeated freezing and thawing.
MSDS:	 Download
Datasheet:	 Download

Applications

Western Blot (Cell lysate)



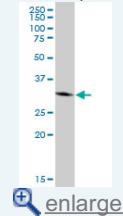
EMD MaxPab polyclonal antibody. Western Blot analysis of EMD expression in 293.

 [Protocol Download](#)

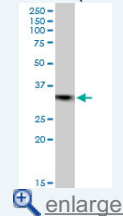
Western Blot (Cell lysate)

Application Image

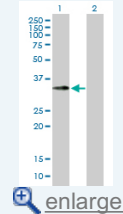
Western Blot (Cell lysate)



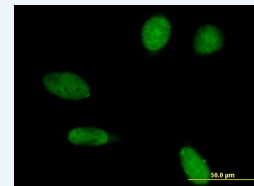
Western Blot (Cell lysate)

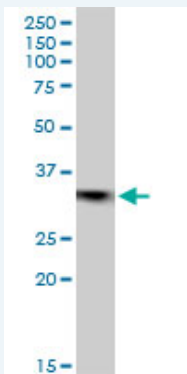


Western Blot (Transfected lysate)



Immunofluorescence

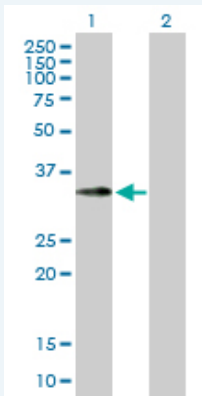




EMD MaxPab polyclonal antibody. Western Blot analysis of EMD expression in MCF-7.

[Protocol Download](#)

Western Blot (Transfected lysate)



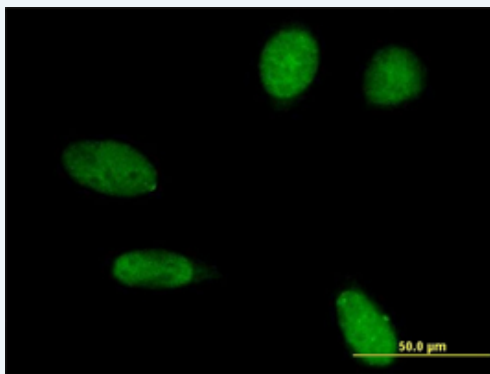
Western Blot analysis of EMD expression in transfected 293T cell line (H00002010-T01) by EMD MaxPab polyclonal antibody.

Lane 1: EMD transfected lysate(27.94 kDa).

Lane 2: Non-transfected lysate.

[Protocol Download](#)

Immunofluorescence



[enlarge this image](#)

Immunofluorescence of purified MaxPab antibody to EMD on HeLa cell. [antibody concentration 10 ug/ml]

[Protocol Download](#)

Gene Information

Entrez GeneID: [2010](#)

GeneBank [BC000738](#)

Accession#:

Protein [AAH00738](#)

Accession#:

Gene Name: EMD

Gene Alias: EDMD,LEMD5,STA

Gene emerin

Description:

Omim ID: [300384](#), [310300](#)

Gene Ontology: [Hyperlink](#)

Gene Summary: Emerin is a serine-rich nuclear membrane protein and a member of the nuclear lamina-associated protein family. It mediates membrane anchorage to the cytoskeleton. Dreifuss-Emery muscular dystrophy is an X-linked inherited degenerative myopathy resulting from mutation in the emerin gene. [provided by RefSeq]

Other LEM domain containing

Designations: 5,OTTHUMP00000031938,OTTHUMP00000061687

Gene Pathway

[Arrhythmogenic right ventricular cardiomyopathy \(ARVC\)](#)

[Hypertrophic cardiomyopathy \(HCM\)](#)

Related Disease

[Cardiomyopathy, Dilated](#) [Cardiovascular Diseases](#) [Diabetes Mellitus, Type 2](#) [Edema](#)

[服務條款](#) | [隱私權政策](#) | [著作及商標](#) | [網站地圖](#)

©2016 亞諾法生技股份有限公司 Abnova Corporation. 版權所有.