



SZABO SCANDIC

Part of Europa Biosite

Produktinformation



Forschungsprodukte & Biochemikalien



Zellkultur & Verbrauchsmaterial



Diagnostik & molekulare Diagnostik



Laborgeräte & Service

Weitere Information auf den folgenden Seiten!
See the following pages for more information!



Lieferung & Zahlungsart

siehe unsere [Liefer- und Versandbedingungen](#)

Zuschläge

- Mindermengenzuschlag
- Trockeneiszuschlag
- Gefahrgutzuschlag
- Expressversand

SZABO-SCANDIC HandelsgmbH

Quellenstraße 110, A-1100 Wien

T. +43(0)1 489 3961-0

F. +43(0)1 489 3961-7

mail@szabo-scandic.com

www.szabo-scandic.com

[linkedin.com/company/szaboscandic](https://www.linkedin.com/company/szaboscandic) 

EMD monoclonal antibody (M01), clone 3B9

Catalog # : H00002010-M01

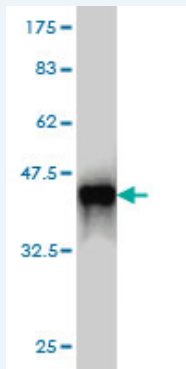
規格 : [100 ug]

[List All](#)

Specification

Product Description:	Mouse monoclonal antibody raised against a partial recombinant EMD.
Immunogen:	EMD (AAH00738, 1 a.a. ~ 110 a.a) partial recombinant protein with GST tag. MW of the GST tag alone is 26 KDa.
Sequence:	MDNYADLSDELTLTLLRRYNIPHGVPVVGSTRRLYEKKIFEYETQRRRLSP PSSSAASSYSFSDLNSTRGDADMYDLPKEDALLYQSKGYNDYYEESY FTTRTYGEPES
Host:	Mouse
Reactivity:	Human
Isotype:	IgG2a Kappa

Quality Control Testing: Antibody Reactive Against Recombinant Protein.



Western Blot detection against Immunogen (37.84 KDa) .

Storage Buffer: In 1x PBS, pH 7.4

Storage Instruction: Store at -20°C or lower. Aliquot to avoid repeated freezing and thawing.

MSDS: [Download](#)

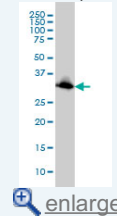
Datasheet: [Download](#)

Applications

Western Blot (Cell lysate)

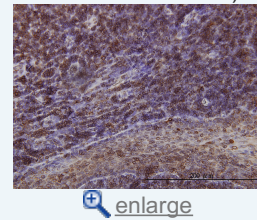
Application Image

Western Blot (Cell lysate)

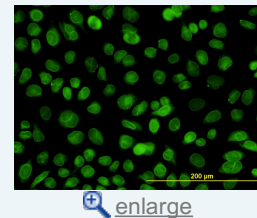


Western Blot (Recombinant protein)

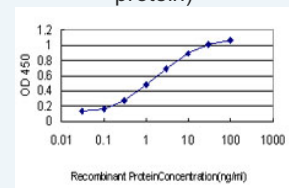
Immunohistochemistry (Formalin/PFA-fixed paraffin-embedded sections)



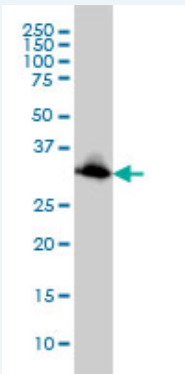
Immunofluorescence



Sandwich ELISA (Recombinant protein)



ELISA



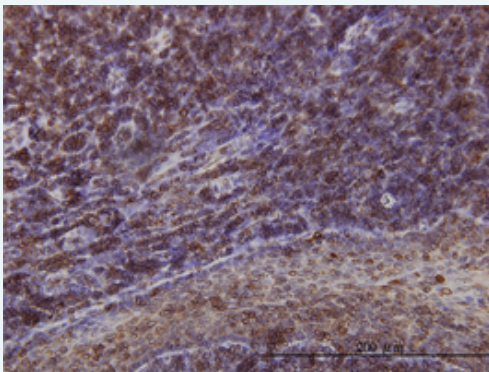
EMD monoclonal antibody (M01), clone 3B9 Western Blot analysis of EMD expression in HeLa (Cat # L013V1).

[Protocol Download](#)

Western Blot (Recombinant protein)

[Protocol Download](#)

Immunohistochemistry (Formalin/PFA-fixed paraffin-embedded sections)

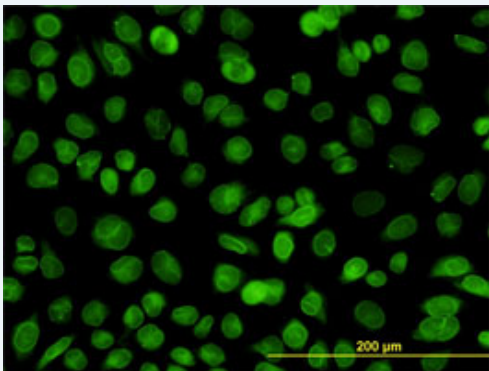


[enlarge this image](#)

Immunoperoxidase of monoclonal antibody to EMD on formalin-fixed paraffin-embedded human tonsil. [antibody concentration 1 ug/ml]

[Protocol Download](#)

Immunofluorescence

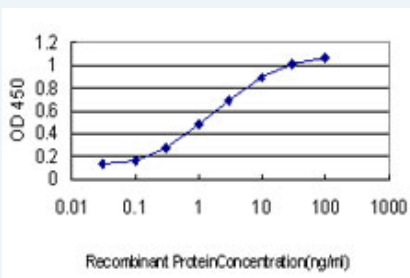


[enlarge this image](#)

Immunofluorescence of monoclonal antibody to EMD on HeLa cell. [antibody concentration 10 ug/ml]

[Protocol Download](#)

Sandwich ELISA (Recombinant protein)



Detection limit for recombinant GST tagged EMD is approximately 0.03ng/ml as a capture antibody.

ELISA

Gene Information

Entrez GeneID: [2010](#)**GeneBank
Accession#:** [BC000738](#)**Protein
Accession#:** [AAH00738](#)**Gene Name:** EMD**Gene Alias:** EDMD,LEMD5,STA**Gene
Description:** emerin**Omim ID:** [300384](#), [310300](#)**Gene Ontology:** [Hyperlink](#)**Gene Summary:** Emerin is a serine-rich nuclear membrane protein and a member of the nuclear lamina-associated protein family. It mediates membrane anchorage to the cytoskeleton. Dreifuss-Emery muscular dystrophy is an X-linked inherited degenerative myopathy resulting from mutation in the emerin gene. [provided by RefSeq]**Other
Designations:** LEM domain containing
5,OTTHUMP00000031938,OTTHUMP00000061687**Gene Pathway**

[Arrhythmogenic right ventricular cardiomyopathy \(ARVC\)](#)
[Hypertrophic cardiomyopathy \(HCM\)](#)**Related Disease**

[Cardiomyopathy, Dilated](#) [Cardiovascular Diseases](#) [Diabetes Mellitus, Type 2](#) [Edema](#)