



# SZABO SCANDIC

Part of Europa Biosite

## Produktinformation



Forschungsprodukte & Biochemikalien



Zellkultur & Verbrauchsmaterial



Diagnostik & molekulare Diagnostik



Laborgeräte & Service

Weitere Information auf den folgenden Seiten!  
See the following pages for more information!



### Lieferung & Zahlungsart

siehe unsere [Liefer- und Versandbedingungen](#)

### Zuschläge

- Mindermengenzuschlag
- Trockeneiszuschlag
- Gefahrgutzuschlag
- Expressversand

### SZABO-SCANDIC HandelsgmbH

Quellenstraße 110, A-1100 Wien

T. +43(0)1 489 3961-0

F. +43(0)1 489 3961-7

[mail@szabo-scandic.com](mailto:mail@szabo-scandic.com)

[www.szabo-scandic.com](http://www.szabo-scandic.com)

[linkedin.com/company/szaboscandic](https://www.linkedin.com/company/szaboscandic) 

## EMD 293T Cell Transient Overexpression Lysate(Denatured)

Catalog # : H00002010-T01

規格 : [ 100 uL ]

[List All](#)

### Specification

**Transfected Cell Line:** 293T

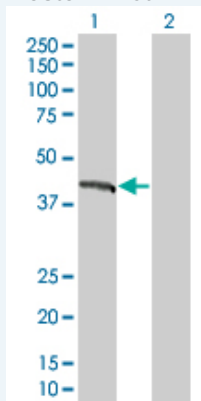
**Plasmid:** pCMV-EMD full-length

**Host:** Human

**Theoretical MW (kDa):** 28.05

**Quality Control Testing:** Transient overexpression cell lysate was tested with Anti-EMD antibody (H00002010-B01) by Western Blots.

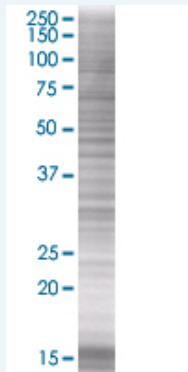
#### Western Blot



Lane 1: EMD transfected lysate ( 27.94 KDa)

Lane 2: Non-transfected lysate.

#### SDS-PAGE Gel



EMD transfected lysate.

**Storage Buffer:** 1X Sample Buffer (50 mM Tris-HCl, 2% SDS, 10% glycerol, 300 mM 2-mercaptoethanol, 0.01% Bromophenol blue)

**Storage Instruction:** Store at -80°C. Aliquot to avoid repeated freezing and thawing.

**MSDS:** [Download](#)

### Applications

### Application Image

Western Blot

## Western Blot

### Gene Information

Entrez GeneID: [2010](#)

GeneBank [BC000738](#)  
Accession#:

Protein [AAH00738](#)  
Accession#:

Gene Name: EMD

Gene Alias: EDMD,LEMD5,STA

Gene [emerin](#)  
Description:

Omim ID: [300384](#), [310300](#)

Gene Ontology: [Hyperlink](#)

**Gene Summary:** Emerin is a serine-rich nuclear membrane protein and a member of the nuclear lamina-associated protein family. It mediates membrane anchorage to the cytoskeleton. Dreifuss-Emery muscular dystrophy is an X-linked inherited degenerative myopathy resulting from mutation in the emerin gene. [provided by RefSeq]

Other [LEM domain containing](#)  
Designations: 5,OTTHUMP00000031938,OTTHUMP00000061687

### Gene Pathway

[Arrhythmogenic right ventricular cardiomyopathy \(ARVC\)](#)  
[Hypertrophic cardiomyopathy \(HCM\)](#)

### Related Disease

[Cardiomyopathy, Dilated](#) [Cardiovascular Diseases](#) [Diabetes Mellitus, Type 2](#) [Edema](#)