



# SZABO SCANDIC

Part of Europa Biosite

## Produktinformation



Forschungsprodukte & Biochemikalien



Zellkultur & Verbrauchsmaterial



Diagnostik & molekulare Diagnostik



Laborgeräte & Service

Weitere Information auf den folgenden Seiten!  
See the following pages for more information!



### Lieferung & Zahlungsart

siehe unsere [Liefer- und Versandbedingungen](#)

### Zuschläge

- Mindermengenzuschlag
- Trockeneiszuschlag
- Gefahrgutzuschlag
- Expressversand

### SZABO-SCANDIC HandelsgmbH

Quellenstraße 110, A-1100 Wien

T. +43(0)1 489 3961-0

F. +43(0)1 489 3961-7

[mail@szabo-scandic.com](mailto:mail@szabo-scandic.com)

[www.szabo-scandic.com](http://www.szabo-scandic.com)

[linkedin.com/company/szaboscandic](https://www.linkedin.com/company/szaboscandic) 

## MARK2 monoclonal antibody (M01), clone 3B12

Catalog # : H00002011-M01

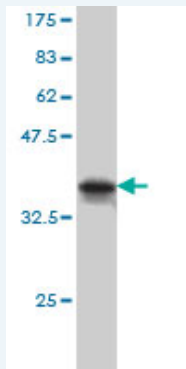
規格 : [ 100 ug ]

[List All](#)

### Specification

<b>Product Description:</b>	Mouse monoclonal antibody raised against a partial recombinant MARK2.
<b>Immunogen:</b>	MARK2 (AAH08771, 401 a.a. ~ 500 a.a) partial recombinant protein with GST tag. MW of the GST tag alone is 26 KDa.
<b>Sequence:</b>	QAAGPAIPTSNSYSKKTQSNNNAENKRPEEDRESGRKASSTAKVPASPLP GLERKKTTPSTNSVLSTSTNRSRNSPLLERASLGQASIQNGKDSLTM PG
<b>Host:</b>	Mouse
<b>Reactivity:</b>	Human, Mouse, Rat
<b>Isotype:</b>	IgG2a Kappa

**Quality Control Testing:** Antibody Reactive Against Recombinant Protein.



Western Blot detection against Immunogen (36.63 KDa) .

**Storage Buffer:** In 1x PBS, pH 7.4

**Storage Instruction:** Store at -20°C or lower. Aliquot to avoid repeated freezing and thawing.

**MSDS:** [Download](#)

**Datasheet:** [Download](#)

### Publication Reference

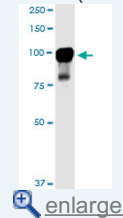
1. Pancreatic LKB1 deletion leads to acinar polarity defects and cystic neoplasms. Hezel AF, Gurumurthy S, Granot Z, Swisa A, Chu GC, Bailey G, Dor Y, Bardeesy N, Depinho RA. Mol Cell Biol. 2008 Apr;28(7):2414-25. Epub 2008 Jan 28.

### Applications

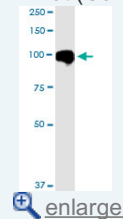
**Western Blot (Cell lysate)**

### Application Image

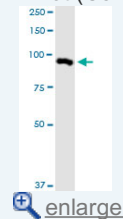
Western Blot (Cell lysate)



Western Blot (Cell lysate)

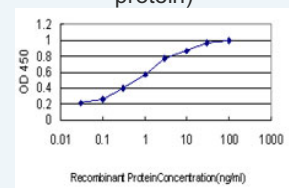


Western Blot (Cell lysate)

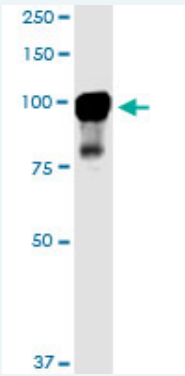


Western Blot (Recombinant protein)

Sandwich ELISA (Recombinant protein)



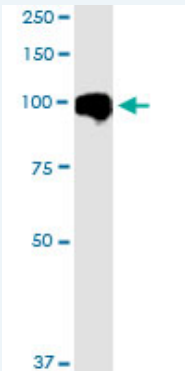
ELISA



MARK2 monoclonal antibody (M01), clone 3B12. Western Blot analysis of MARK2 expression in PC-12.

[Protocol Download](#)

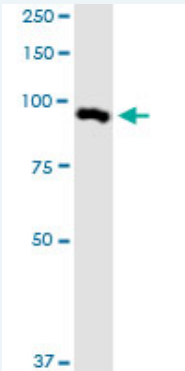
**Western Blot (Cell lysate)**



MARK2 monoclonal antibody (M01), clone 3B12. Western Blot analysis of MARK2 expression in A-431.

[Protocol Download](#)

**Western Blot (Cell lysate)**



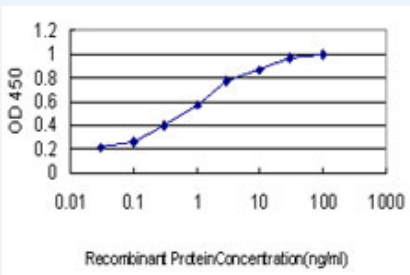
MARK2 monoclonal antibody (M01), clone 3B12. Western Blot analysis of MARK2 expression in NIH/3T3.

[Protocol Download](#)

**Western Blot (Recombinant protein)**

[Protocol Download](#)

**Sandwich ELISA (Recombinant protein)**



Detection limit for recombinant GST tagged MARK2 is approximately 0.03ng/ml as a capture antibody.

---

**ELISA**

---

**Gene Information**

---

**Entrez GeneID:** [2011](#)**GeneBank  
Accession#:** [BC008771](#)**Protein  
Accession#:** [AAH08771](#)**Gene Name:** MARK2**Gene Alias:** EMK1,MGC99619,PAR-1,Par1b**Gene  
Description:** MAP/microtubule affinity-regulating kinase 2**Omim ID:** [600526](#)**Gene Ontology:** [Hyperlink](#)**Gene Summary:** This gene encodes a member of the Par-1 family of serine/threonine protein kinases. The protein is an important regulator of cell polarity in epithelial and neuronal cells, and also controls the stability of microtubules through phosphorylation and inactivation of several microtubule-associating proteins. The protein localizes to cell membranes. Multiple transcript variants encoding different isoforms have been found for this gene. [provided by RefSeq]**Other  
Designations:** ELKL motif kinase 1,Ser/Thr protein kinase PAR-1B,protein-serine/threonine kinase,serine/threonine kinase**Related Disease**

---

[Coronary Artery Disease](#)