



SZABO SCANDIC

Part of Europa Biosite

Produktinformation



Forschungsprodukte & Biochemikalien



Zellkultur & Verbrauchsmaterial



Diagnostik & molekulare Diagnostik



Laborgeräte & Service

Weitere Information auf den folgenden Seiten!
See the following pages for more information!



Lieferung & Zahlungsart

siehe unsere [Liefer- und Versandbedingungen](#)

Zuschläge

- Mindermengenzuschlag
- Trockeneiszuschlag
- Gefahrgutzuschlag
- Expressversand

SZABO-SCANDIC HandelsgmbH

Quellenstraße 110, A-1100 Wien

T. +43(0)1 489 3961-0

F. +43(0)1 489 3961-7

mail@szabo-scandic.com

www.szabo-scandic.com

[linkedin.com/company/szaboscandic](https://www.linkedin.com/company/szaboscandic) 

MARK2 293T Cell Transient Overexpression Lysate(Denatured)

Catalog # : H00002011-T02

規格 : [100 uL]

[List All](#)

Specification

Transfected Cell Line: 293T

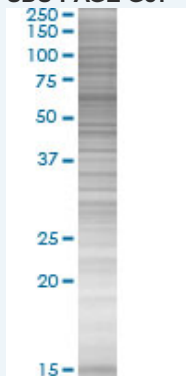
Plasmid: pCMV-MARK2 full-length

Host: Human

Theoretical MW (kDa): 84.3

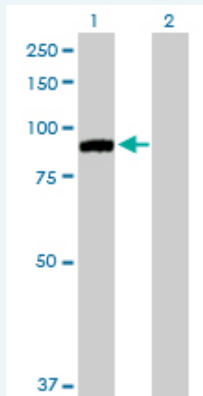
Quality Control Testing: Transient overexpression cell lysate was tested with Anti-MARK2 antibody (H00002011-D01P) by Western Blots.

SDS-PAGE Gel



MARK2 transfected lysate.

Western Blot



Lane 1: MARK2 transfected lysate (84.30 KDa)

Lane 2: Non-transfected lysate.

Storage Buffer: 1X Sample Buffer (50 mM Tris-HCl, 2% SDS, 10% glycerol, 300 mM 2-mercaptoethanol, 0.01% Bromophenol blue)

Storage Instruction: Store at -80°C. Aliquot to avoid repeated freezing and thawing.

MSDS:  [Download](#)

Applications

Application Image

Western Blot

Western Blot

Gene Information

Entrez GeneID: [2011](#)

GeneBank Accession#: [NM_001039469.1](#)

Protein Accession#: [NP_001034558.1](#)

Gene Name: MARK2

Gene Alias: EMK1,MGC99619,PAR-1,Par1b

Gene Description: MAP/microtubule affinity-regulating kinase 2

Omim ID: [600526](#)

Gene Ontology: [Hyperlink](#)

Gene Summary: This gene encodes a member of the Par-1 family of serine/threonine protein kinases. The protein is an important regulator of cell polarity in epithelial and neuronal cells, and also controls the stability of microtubules through phosphorylation and inactivation of several microtubule-associated proteins. The protein localizes to cell membranes. Multiple transcript variants encoding different isoforms have been found for this gene. [provided by RefSeq]

Other Designations: ELKL motif kinase 1,Ser/Thr protein kinase PAR-1B,protein-serine/threonine kinase,serine/threonine kinase

Related Disease

[Coronary Artery Disease](#)

[服務條款](#) | [隱私權政策](#) | [著作及商標](#) | [網站地圖](#)

©2016 亞諾法生技股份有限公司 Abnova Corporation. 版權所有.