



# SZABO SCANDIC

Part of Europa Biosite

## Produktinformation



Forschungsprodukte & Biochemikalien



Zellkultur & Verbrauchsmaterial



Diagnostik & molekulare Diagnostik



Laborgeräte & Service

Weitere Information auf den folgenden Seiten!  
See the following pages for more information!



### Lieferung & Zahlungsart

siehe unsere [Liefer- und Versandbedingungen](#)

### Zuschläge

- Mindermengenzuschlag
- Trockeneiszuschlag
- Gefahrgutzuschlag
- Expressversand

### SZABO-SCANDIC HandelsgmbH

Quellenstraße 110, A-1100 Wien

T. +43(0)1 489 3961-0

F. +43(0)1 489 3961-7

[mail@szabo-scandic.com](mailto:mail@szabo-scandic.com)

[www.szabo-scandic.com](http://www.szabo-scandic.com)

[linkedin.com/company/szaboscandic](https://www.linkedin.com/company/szaboscandic) 

## EMP1 polyclonal antibody (A01)

Catalog # : H00002012-A01

規格 : [ 50 uL ]

[List All](#)

### Specification

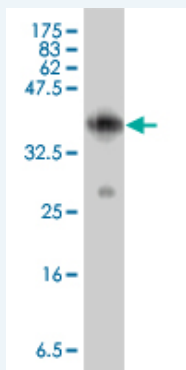
<b>Product Description:</b>	Mouse polyclonal antibody raised against a full-length recombinant EMP1.
<b>Immunogen:</b>	EMP1 (AAH47300, 1 a.a. ~ 157 a.a) full-length recombinant protein with GST tag.
<b>Sequence:</b>	MLVLLAGIFVWHIATVIMLFVSTIANVWLVSNVDASVGLWKNCTNISCSDS LSYASEDALKTVQAFMILSIIFCVIALLVFVFLFTMEKGNRFFLSGATTLV CWLCILVGSIYTSHYANRDGTQYHHGYSYILGWICFCFSFIIGVLYLVRK K
<b>Host:</b>	Mouse
<b>Reactivity:</b>	Human

### Application Image

Western Blot (Recombinant protein)

ELISA

**Quality Control Testing:** Antibody Reactive Against Recombinant Protein.



Western Blot detection against Immunogen (43.38 kDa) .

**Storage Buffer:** 50 % glycerol

**Storage Instruction:** Store at -20°C or lower. Aliquot to avoid repeated freezing and thawing.

**MSDS:** [Download](#)

**Datasheet:** [Download](#)

### Publication Reference

- [The somatostatin analogue octreotide inhibits growth of small intestine neuroendocrine tumour cells.](#)  
Li SC, Martijn C, Cui T, Essaghir A, Luque RM, Demoulin JB, Castano JP, Oberg K, Giandomenico V. PLoS One. 2012;7(10):e48411. doi: 10.1371/journal.pone.0048411. Epub 2012 Oct 31.
- [Knockdown Epithelial Membrane Protein 1 Suppresses Human Degenerative Intervertebral Disc-Derived Nucleus Pulposus Cell Proliferation.](#)  
L ZY, Xiong SH, Hu M, Zhang CS. Cartilage July 2011 vol. 2 no. 3 300-306
- [Epithelial Membrane Protein 1 Inhibits Human Spinal Chondrocyte Differentiation.](#)  
Li ZY, Xiong SH, Hu M, Zhang CS. Anat Rec (Hoboken). 2011 Apr 29. doi: 10.1002/ar.21395. [Epub ahead of print]

4. The expression of EMP1 is downregulated in oral squamous cell carcinoma and possibly associated with tumour metastasis.  
Zhang J, Cao W, Xu Q, Chen WT. J Clin Pathol. 2010 Oct 27. [Epub ahead of print]
5. Up-regulation of epithelial membrane protein-1 in the temporal neocortex of patients with intractable epilepsy.  
Li YQ, Xue T, Wang L, Xu ZC, Xi ZQ, Yuan J, Wang XF, Chen YM, Zhang M, Yao L. Neurochem Res. 2009 Sep;34(9):1594-602. Epub 2009 Mar 14.
6. Novel markers for differentiation of lobular and ductal invasive breast carcinomas by laser microdissection and microarray analysis.  
Turashvili G, Bouchal J, Baumforth K, Wei W, Dziechciarkova M, Ehrmann J, Klein J, Fridman E, Skarda J, Srovnal J, Hajduch M, Murray P, Kolar Z. BMC Cancer. 2007 Mar 27;7:55.

## Applications

### Western Blot (Recombinant protein)

 [Protocol Download](#)

### ELISA

## Gene Information

Entrez GeneID: [2012](#)

GeneBank [BC047300](#)  
Accession#:

Protein [AAH47300](#)  
Accession#:

Gene Name: EMP1

Gene Alias: CL-20,EMP-1,TMP

Gene Description: epithelial membrane protein 1

Omim ID: [602333](#)

Gene Ontology: [Hyperlink](#)

Other Designations: -

[服務條款](#) | [隱私權政策](#) | [著作及商標](#) | [網站地圖](#)

©2016 亞諾法生技股份有限公司 Abnova Corporation. 版權所有.