



# SZABO SCANDIC

Part of Europa Biosite

## Produktinformation



Forschungsprodukte & Biochemikalien



Zellkultur & Verbrauchsmaterial



Diagnostik & molekulare Diagnostik



Laborgeräte & Service

Weitere Information auf den folgenden Seiten!  
See the following pages for more information!



### Lieferung & Zahlungsart

siehe unsere [Liefer- und Versandbedingungen](#)

### Zuschläge

- Mindermengenzuschlag
- Trockeneiszuschlag
- Gefahrgutzuschlag
- Expressversand

### SZABO-SCANDIC HandelsgmbH

Quellenstraße 110, A-1100 Wien

T. +43(0)1 489 3961-0

F. +43(0)1 489 3961-7

[mail@szabo-scandic.com](mailto:mail@szabo-scandic.com)

[www.szabo-scandic.com](http://www.szabo-scandic.com)

[linkedin.com/company/szaboscandic](https://www.linkedin.com/company/szaboscandic) 

**EMR1 purified MaxPab mouse polyclonal antibody (B01P)** MaxPab®

Catalog # : H00002015-B01P

規格 : [ 50 ug ]

[List All](#)

**Specification**

**Product Description:** Mouse polyclonal antibody raised against a full-length human EMR1 protein.

**Immunogen:** EMR1 (AAH59395, 1 a.a. ~ 821 a.a) full-length human protein.

**Sequence:**  
 MRGFNLLLFWGCCVMHSEWEGHIRPTRKPNKGNCRDSTLCPAYATCT  
 NTVDSYCCACKQGFSSNGQNHFKDPGVRCKDIDECSQSPQPCGPNSS  
 CKNLSGRYKCCLDGFSSPTGNDWVPGKPGNFCTDINECLTSSVCPE  
 HSDCVNSMGSYSCSCQVGFISRNSTCEDVDECADPRACPEHATCNNTV  
 GNYSFCNPGFESSGHLFQGLKASCEDIDECTEMCPINSTCTNTPGS  
 YFCTCHPGFAPSNGQLNFTDQGVVECRDIDECRQDPSTCGPNSICTNAL  
 GSYSCGCIAGFHPNPEGSQKDGNFSCQRVLFKCKEDVIPDNKQIQQCQE  
 GTAVKPAYVSFCAQINNIFSVLDKVCENKTTVSLKNTTESFVPLKQIST  
 WTKFTKEETSSLATVFLESVESMTLASFWKPSANITPAVRTEYLDIESKVI  
 NKECSEENVTLDLVAKGDKMKIGCSTIEESESTETTGVAFVSFVGMESVL  
 NERFFKDHQAPLTTSEIKLKMNSRVVGGIMTGEKKDGFSDPIIYTLNIQP  
 KQKFERPICVSWSTDVKGGRWTSFGCVILEASETYTICSCNQMANLAIM  
 ASGELTMGCAIAGFLHYLFLACFFWMLVEAVILFLMVRNLKVVNYFSSRN  
 IKMLHICAFGYGLPMLVVISASVQPQGYGMHNRCLNTETGFWSFLGP  
 VCTVIVINSLLLTWTWLWLRQLSSVNAEVSTLKDTRLLTFKAFQFLILGC  
 SWVLGIFQIGPVAGVMAYLFTIINSLQGAFIFLIHCLLNGQVREEYKRWITG  
 KTKPSSQSQTSRILLSSMPSASKTG

**Host:** Mouse

**Reactivity:** Human

**Quality Control Testing:** Antibody reactive against mammalian transfected lysate.

**Storage Buffer:** In 1x PBS, pH 7.4

**Storage Instruction:** Store at -20°C or lower. Aliquot to avoid repeated freezing and thawing.

**MSDS:**  [Download](#)

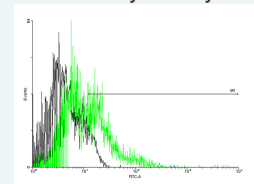
**Datasheet:**  [Download](#)

**Applications**

**Flow Cytometry**

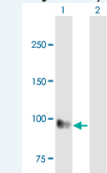
**Application Image**

Flow Cytometry

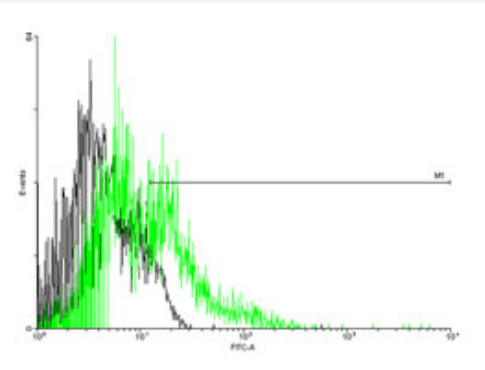


 [enlarge](#)

Western Blot (Transfected lysate)



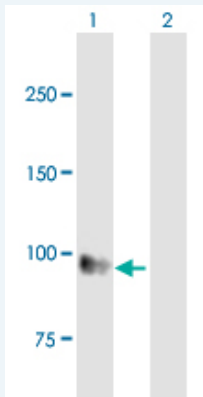
 [enlarge](#)



[enlarge this image](#)

FACS analysis of negative control 293 cells (Black) and EMR1 expressing 293 cells (Green) using EMR1 purified MaxPab mouse polyclonal antibody.

#### Western Blot (Transfected lysate)



Western Blot analysis of EMR1 expression in transfected 293T cell line ([H00002015-T02](#)) by EMR1 MaxPab polyclonal antibody.

Lane 1: EMR1 transfected lysate(90.31 KDa).

Lane 2: Non-transfected lysate.

[Protocol Download](#)

#### Gene Information

Entrez GeneID: [2015](#)

GeneBank [BC059395](#)

Accession#:

Protein [AAH59395](#)

Accession#:

Gene Name: EMR1

Gene Alias: TM7LN3

Gene Description: egf-like module containing, mucin-like, hormone receptor-like 1

Omim ID: [600493](#)

Gene Ontology: [Hyperlink](#)

**Gene Summary:** This gene encodes a protein that has a domain resembling seven transmembrane G protein-coupled hormone receptors (7TM receptors) at its C-terminus. The N-terminus of the encoded protein has six EGF-like modules, separated from the transmembrane segments by a serine/threonine-rich domain, a feature reminiscent of mucin-like, single-span, integral membrane glycoproteins with adhesive properties. [provided by RefSeq]

**Other** egf-like module containing, mucin-like, hormone receptor-like sequence  
**Designations:** 1

---

#### **Related Disease**

---

Genetic Predisposition to Disease Hyperparathyroidism, Secondary

---

[服務條款](#) | [隱私權政策](#) | [著作及商標](#) | [網站地圖](#)

©2016 亞諾法生技股份有限公司 Abnova Corporation. 版權所有.