



# SZABO SCANDIC

Part of Europa Biosite

## Produktinformation



Forschungsprodukte & Biochemikalien



Zellkultur & Verbrauchsmaterial



Diagnostik & molekulare Diagnostik



Laborgeräte & Service

Weitere Information auf den folgenden Seiten!  
See the following pages for more information!



### Lieferung & Zahlungsart

siehe unsere [Liefer- und Versandbedingungen](#)

### Zuschläge

- Mindermengenzuschlag
- Trockeneiszuschlag
- Gefahrgutzuschlag
- Expressversand

### SZABO-SCANDIC HandelsgmbH

Quellenstraße 110, A-1100 Wien

T. +43(0)1 489 3961-0

F. +43(0)1 489 3961-7

[mail@szabo-scandic.com](mailto:mail@szabo-scandic.com)

[www.szabo-scandic.com](http://www.szabo-scandic.com)

[linkedin.com/company/szaboscandic](https://www.linkedin.com/company/szaboscandic) 

## EMR1 293T Cell Transient Overexpression Lysate(Denatured)

Catalog # : H00002015-T01

規格 : [ 100 uL ]

List All

### Specification

**Transfected Cell Line:** 293T

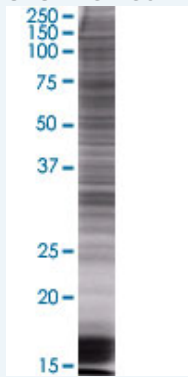
**Plasmid:** pCMV-EMR1 full-length

**Host:** Human

**Theoretical MW (kDa):** 90.42

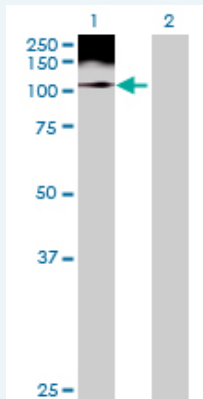
**Quality Control Testing:** Transient overexpression cell lysate was tested with Anti-EMR1 antibody (H00002015-B01) by Western Blots.

#### SDS-PAGE Gel



EMR1 transfected lysate.

#### Western Blot



Lane 1: EMR1 transfected lysate ( 90.42 KDa)

Lane 2: Non-transfected lysate.

**Storage Buffer:** 1X Sample Buffer (50 mM Tris-HCl, 2% SDS, 10% glycerol, 300 mM 2-mercaptoethanol, 0.01% Bromophenol blue)

**Storage Instruction:** Store at -80°C. Aliquot to avoid repeated freezing and thawing.

**MSDS:**  [Download](#)

### Applications

### Application Image

Western Blot

## Western Blot

### Gene Information

Entrez GeneID: [2015](#)

GeneBank [BC059395](#)  
Accession#:

Protein [AAH59395](#)  
Accession#:

Gene Name: EMR1

Gene Alias: TM7LN3

Gene Description: egf-like module containing, mucin-like, hormone receptor-like 1

Omim ID: [600493](#)

Gene Ontology: [Hyperlink](#)

**Gene Summary:** This gene encodes a protein that has a domain resembling seven transmembrane G protein-coupled hormone receptors (7TM receptors) at its C-terminus. The N-terminus of the encoded protein has six EGF-like modules, separated from the transmembrane segments by a serine/threonine-rich domain, a feature reminiscent of mucin-like, single-span, integral membrane glycoproteins with adhesive properties. [provided by RefSeq]

**Other Designations:** egf-like module containing, mucin-like, hormone receptor-like sequence 1

### Related Disease

[Genetic Predisposition to Disease Hyperparathyroidism, Secondary](#)