



# SZABO SCANDIC

Part of Europa Biosite

## Produktinformation



Forschungsprodukte & Biochemikalien



Zellkultur & Verbrauchsmaterial



Diagnostik & molekulare Diagnostik



Laborgeräte & Service

Weitere Information auf den folgenden Seiten!  
See the following pages for more information!



### Lieferung & Zahlungsart

siehe unsere [Liefer- und Versandbedingungen](#)

### Zuschläge

- Mindermengenzuschlag
- Trockeneiszuschlag
- Gefahrgutzuschlag
- Expressversand

### SZABO-SCANDIC HandelsgmbH

Quellenstraße 110, A-1100 Wien

T. +43(0)1 489 3961-0

F. +43(0)1 489 3961-7

[mail@szabo-scandic.com](mailto:mail@szabo-scandic.com)

[www.szabo-scandic.com](http://www.szabo-scandic.com)

[linkedin.com/company/szaboscandic](https://www.linkedin.com/company/szaboscandic) 

# CTTN MaxPab mouse polyclonal antibody (B01) MaxPab®

Catalog # : H00002017-B01

規格 : [ 50 uL ]

[List All](#)

## Specification

**Product Description:** Mouse polyclonal antibody raised against a full-length human CTTN protein.

**Immunogen:** CTTN (NP\_612632.1, 1 a.a. ~ 513 a.a) full-length human protein.

**Sequence:**  
 MWKASAGHAVSIAQDDAGADDWETDPDFVNDVSEKEQRWGAKTVQGS  
 GHQEHINIHKLRENVFQEHQTLKEKELETGPKASHGYGGKFGVEQDRMD  
 KSAVGHEYQSKLSKHCSQVDSVRGFGGKFGVQMDRVDQSAVGFEYQG  
 KTEKHASQKDYSSGFGGKYGVQADRVDKSAVGFDYQGKTEKHESQRD  
 YSKGFGGKYGIDKDKVDKSAVGFEYQGKTEKHESQKDYVKGF GGKFGV  
 QTD RQDKCALGWDHQEKLQLHESQKDYSGFGGKYGVQKDRMDKNA  
 STFEDVTQVSSAYQKTVPVEAVTSKTSNIRANFENLAKEKEQEDRRKAEA  
 ERAQRMAKERQEQEEARRKLEEQARAKTQTPPVSPAPQPT EERLPSSP  
 VYEDAASFKAELSYRGPVSGTEPEPVYSMEAADYREASSQQGLAYATE  
 AVYESAEAPGHYPAEDSTYDEYENDLGITAVAALYDYQAAGDDEISFDPPD  
 IITNIEMIDDGWWRGVCKGRYGLFPANYVELRQ

**Host:** Mouse

**Reactivity:** Human, Rat

**Quality Control Testing:** Antibody reactive against mammalian transfected lysate.

**Storage Buffer:** No additive

**Storage Instruction:** Store at -20°C or lower. Aliquot to avoid repeated freezing and thawing.

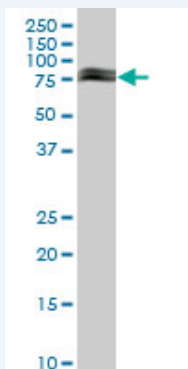
**Note:** For IHC and IF applications, antibody purification with Protein A will be needed prior to use.

**MSDS:** [Download](#)

**Datasheet:** [Download](#)

## Applications

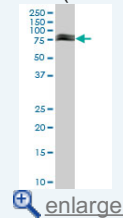
### Western Blot (Tissue lysate)



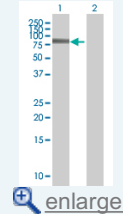
CTTN MaxPab polyclonal antibody. Western Blot analysis of CTTN expression in rat brain.

## Application Image

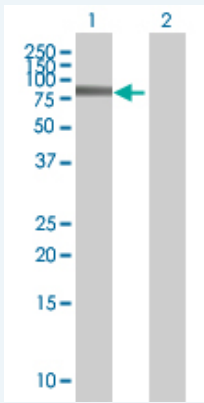
### Western Blot (Tissue lysate)



### Western Blot (Transfected lysate)



**Western Blot (Transfected lysate)**



Western Blot analysis of CTTN expression in transfected 293T cell line ([H00002017-T01](#)) by CTTN MaxPab polyclonal antibody.

Lane 1: CTTN transfected lysate(56.43 KDa).

Lane 2: Non-transfected lysate.

**Gene Information**

**Entrez GeneID:** [2017](#)

**GeneBank Accession#:** [NM\\_138565.1](#)

**Protein Accession#:** [NP\\_612632.1](#)

**Gene Name:** CTTN

**Gene Alias:** EMS1,FLJ34459

**Gene Description:** cortactin

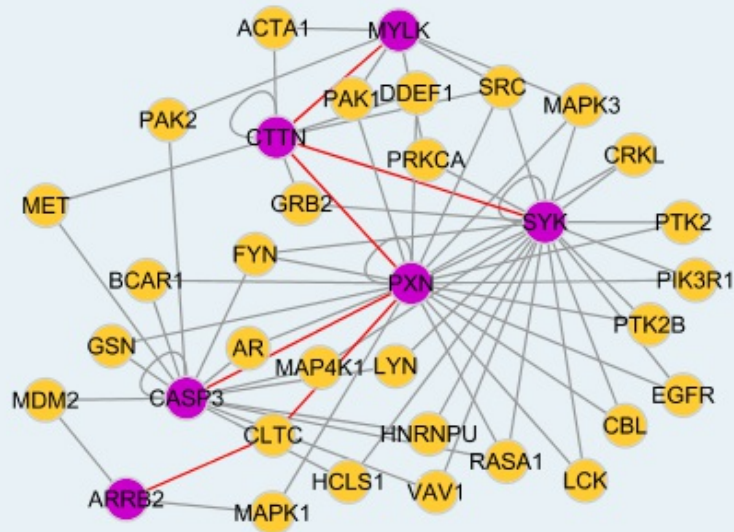
**Omim ID:** [164765](#)

**Gene Ontology:** [Hyperlink](#)

**Gene Summary:** This gene is overexpressed in breast cancer and squamous cell carcinomas of the head and neck. The encoded protein is localized in the cytoplasm and in areas of the cell-substratum contacts. This gene has two roles: (1) regulating the interactions between components of adherens-type junctions and (2) organizing the cytoskeleton and cell adhesion structures of epithelia and carcinoma cells. During apoptosis, the encoded protein is degraded in a caspase-dependent manner. The aberrant regulation of this gene contributes to tumor cell invasion and metastasis. Two splice variants that encode different isoforms have been identified for this gene. [provided by RefSeq]

**Other Designations:** 1110020L01Rik,ems1 sequence (mammary tumor and squamous cell carcinoma-associated (p80/85 src substrate),oncogene EMS1

**Interactome**



### Gene Pathway

[Pathogenic Escherichia coli infection - EHEC Tight junction](#)

### Related Disease

[Asthma](#) [Asthma Genetic Predisposition to Disease](#)

[服務條款](#) | [隱私權政策](#) | [著作及商標](#) | [網站地圖](#)

©2016 亞諾法生技股份有限公司 Abnova Corporation. 版權所有.