



SZABO SCANDIC

Part of Europa Biosite

Produktinformation



Forschungsprodukte & Biochemikalien



Zellkultur & Verbrauchsmaterial



Diagnostik & molekulare Diagnostik



Laborgeräte & Service

Weitere Information auf den folgenden Seiten!
See the following pages for more information!



Lieferung & Zahlungsart

siehe unsere [Liefer- und Versandbedingungen](#)

Zuschläge

- Mindermengenzuschlag
- Trockeneiszuschlag
- Gefahrgutzuschlag
- Expressversand

SZABO-SCANDIC HandelsgmbH

Quellenstraße 110, A-1100 Wien

T. +43(0)1 489 3961-0

F. +43(0)1 489 3961-7

mail@szabo-scandic.com

www.szabo-scandic.com

[linkedin.com/company/szaboscandic](https://www.linkedin.com/company/szaboscandic) 

CTTN purified MaxPab rabbit polyclonal antibody (D01P) MaxPab®

Catalog # : H00002017-D01P

規格 : [100 ug]

[List All](#)

Specification

Product Description: Rabbit polyclonal antibody raised against a full-length human CTTN protein.

Immunogen: CTTN (NP_612632.1, 1 a.a. ~ 513 a.a) full-length human protein.

Sequence:
 MWKASAGHAVSIAQDDAGADDWETDPDFVNDVSEKEQRWGAKTVQGS
 GHQEHINHLRENVFQEHQTLKEKELETGPKASHGYGGKFGVEQDRMD
 KSAVGHEYQSKLSKHCSQVDSVRGFGGKFGVQMDRVDQSAVGFYQGG
 KTEKHASQKDYSSGFGGKYGVQADRVDKSAVGFQYQGGKTEKHESQRD
 YSKGFGGKYGIDKDKVDSAVGFYQGGKTEKHESQKDYVKGFGGKFGV
 QTDQRDKCALGWDHKEKLQLHESQKDYSGFGGKYGVQKDRMDKNA
 STFEDVTQVSSAYQKTPVEAVTSKTSNIRANFENLAKEKEQEDRRKAEA
 ERAQRMAKERQEQEEARRKLEEQARAKTQTPPVSPAPQPTTEERLPSSP
 VYEDAASFKAELSYRGPVSGTEPEPVYSMEAADYREASSQQGLAYATE
 AVYESAEAPGHYPAEDSTYDEYENDLGITAVALYDYQAAGDDEISFPDD
 IITNIEMIDDGWWRGVCKGRYGLFPANYVELRQ

Host: Rabbit

Reactivity: Human

Quality Control Testing: Antibody reactive against mammalian transfected lysate.

Storage Buffer: In 1x PBS, pH 7.4

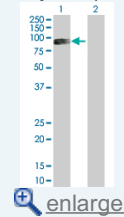
Storage Instruction: Store at -20°C or lower. Aliquot to avoid repeated freezing and thawing.

MSDS: [Download](#)

Datasheet: [Download](#)

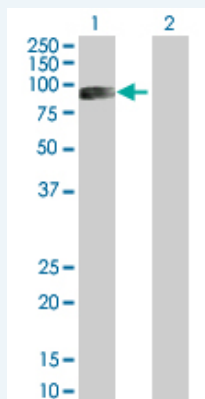
Application Image

Western Blot (Transfected lysate)



Applications

Western Blot (Transfected lysate)



Western Blot analysis of CTTN expression in transfected 293T cell line (H00002017-T01) by CTTN MaxPab polyclonal antibody.

Lane 1: CTTN transfected lysate(57.50 KDa).

Gene Information

Entrez GeneID: [2017](#)

GeneBank Accession#: [NM_138565.1](#)

Protein Accession#: [NP_612632.1](#)

Gene Name: CTTN

Gene Alias: EMS1,FLJ34459

Gene Description: cortactin

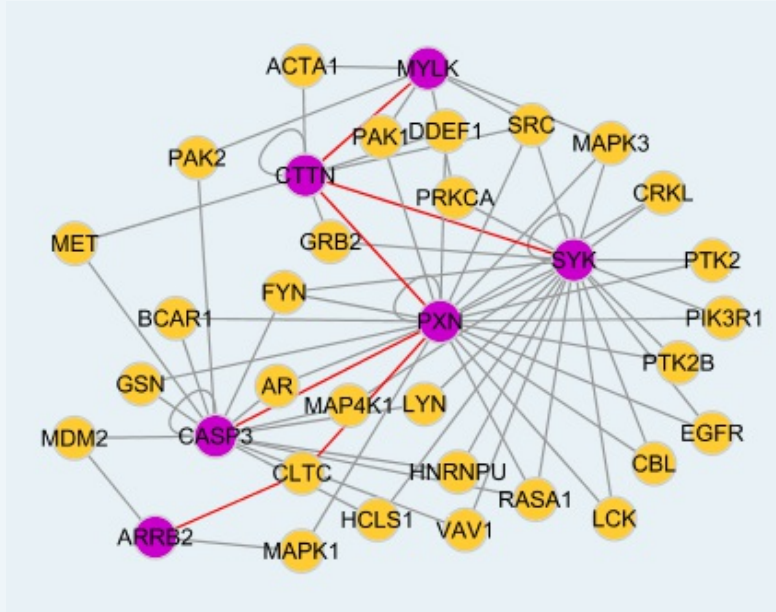
Omim ID: [164765](#)

Gene Ontology: [Hyperlink](#)

Gene Summary: This gene is overexpressed in breast cancer and squamous cell carcinomas of the head and neck. The encoded protein is localized in the cytoplasm and in areas of the cell-substratum contacts. This gene has two roles: (1) regulating the interactions between components of adherens-type junctions and (2) organizing the cytoskeleton and cell adhesion structures of epithelia and carcinoma cells. During apoptosis, the encoded protein is degraded in a caspase-dependent manner. The aberrant regulation of this gene contributes to tumor cell invasion and metastasis. Two splice variants that encode different isoforms have been identified for this gene. [provided by RefSeq]

Other Designations: 1110020L01Rik,ems1 sequence (mammary tumor and squamous cell carcinoma-associated (p80/85 src substrate),oncogene EMS1

Interactome



Gene Pathway

Pathogenic Escherichia coli infection - EHEC Tight junction

Related Disease

[服務條款](#) | [隱私權政策](#) | [著作及商標](#) | [網站地圖](#)

©2016 亞諾法生技股份有限公司 Abnova Corporation. 版權所有.