



# SZABO SCANDIC

Part of Europa Biosite

## Produktinformation



Forschungsprodukte & Biochemikalien



Zellkultur & Verbrauchsmaterial



Diagnostik & molekulare Diagnostik



Laborgeräte & Service

Weitere Information auf den folgenden Seiten!  
See the following pages for more information!



### Lieferung & Zahlungsart

siehe unsere [Liefer- und Versandbedingungen](#)

### Zuschläge

- Mindermengenzuschlag
- Trockeneiszuschlag
- Gefahrgutzuschlag
- Expressversand

### SZABO-SCANDIC HandelsgmbH

Quellenstraße 110, A-1100 Wien

T. +43(0)1 489 3961-0

F. +43(0)1 489 3961-7

[mail@szabo-scandic.com](mailto:mail@szabo-scandic.com)

[www.szabo-scandic.com](http://www.szabo-scandic.com)

[linkedin.com/company/szaboscandic](https://www.linkedin.com/company/szaboscandic) 

## CTTN 293T Cell Transient Overexpression Lysate(Denatured)

Catalog # : H00002017-T01

規格 : [ 100 uL ]

List All

### Specification

**Transfected Cell Line:** 293T

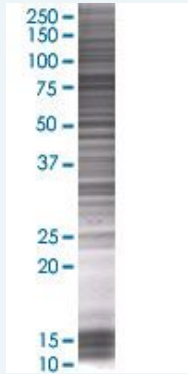
**Plasmid:** pCMV-CTTN full-length

**Host:** Human

**Theoretical MW (kDa):** 56.54

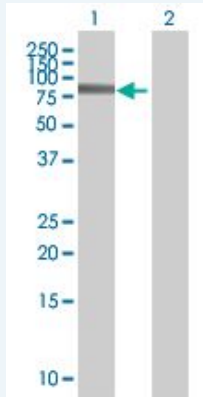
**Quality Control Testing:** Transient overexpression cell lysate was tested with Anti-CTTN antibody (H00002017-B01) by Western Blots.

#### SDS-PAGE Gel



CTTN transfected lysate.

#### Western Blot



Lane 1: CTTN transfected lysate ( 56.54 KDa)

Lane 2: Non-transfected lysate.

**Storage Buffer:** 1X Sample Buffer (50 mM Tris-HCl, 2% SDS, 10% glycerol, 300 mM 2-mercaptoethanol, 0.01% Bromophenol blue)

**Storage Instruction:** Store at -80°C. Aliquot to avoid repeated freezing and thawing.

**MSDS:**  [Download](#)

### Applications

## Western Blot

### Gene Information

Entrez GeneID: [2017](#)

GeneBank [NM\\_138565.1](#)  
Accession#:

Protein [NP\\_612632.1](#)  
Accession#:

Gene Name: CTTN

Gene Alias: EMS1,FLJ34459

Gene cortactin  
Description:

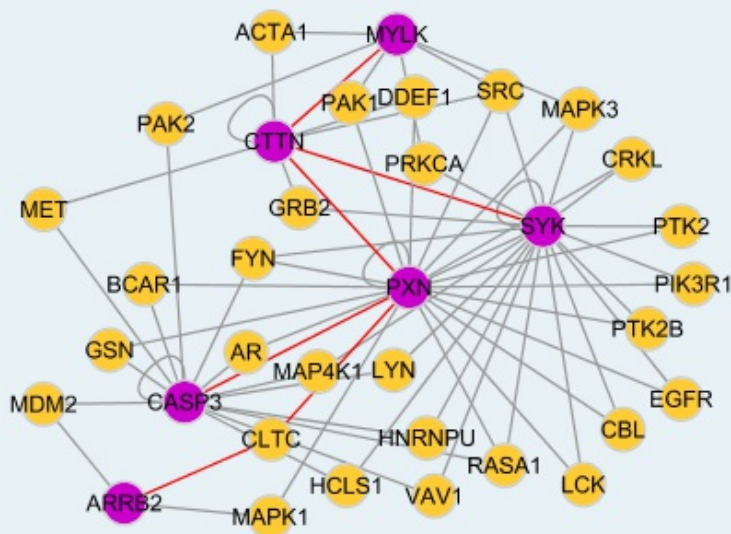
Omim ID: [164765](#)

Gene Ontology: [Hyperlink](#)

**Gene Summary:** This gene is overexpressed in breast cancer and squamous cell carcinomas of the head and neck. The encoded protein is localized in the cytoplasm and in areas of the cell-substratum contacts. This gene has two roles: (1) regulating the interactions between components of adherens-type junctions and (2) organizing the cytoskeleton and cell adhesion structures of epithelia and carcinoma cells. During apoptosis, the encoded protein is degraded in a caspase-dependent manner. The aberrant regulation of this gene contributes to tumor cell invasion and metastasis. Two splice variants that encode different isoforms have been identified for this gene. [provided by RefSeq]

**Other Designations:** 1110020L01Rik,ems1 sequence (mammary tumor and squamous cell carcinoma-associated (p80/85 src substrate),oncogene EMS1

### Interactome



### Gene Pathway

[Pathogenic Escherichia coli infection - EHEC Tight junction](#)

### Related Disease

[Asthma](#) [Asthma](#) [Genetic Predisposition to Disease](#)

---

[服務條款](#) | [隱私權政策](#) | [著作及商標](#) | [網站地圖](#)

©2016 亞諾法生技股份有限公司 Abnova Corporation. 版權所有.