



SZABO SCANDIC

Part of Europa Biosite

Produktinformation



Forschungsprodukte & Biochemikalien



Zellkultur & Verbrauchsmaterial



Diagnostik & molekulare Diagnostik



Laborgeräte & Service

Weitere Information auf den folgenden Seiten!
See the following pages for more information!



Lieferung & Zahlungsart

siehe unsere [Liefer- und Versandbedingungen](#)

Zuschläge

- Mindermengenzuschlag
- Trockeneiszuschlag
- Gefahrgutzuschlag
- Expressversand

SZABO-SCANDIC HandelsgmbH

Quellenstraße 110, A-1100 Wien

T. +43(0)1 489 3961-0

F. +43(0)1 489 3961-7

mail@szabo-scandic.com

www.szabo-scandic.com

[linkedin.com/company/szaboscandic](https://www.linkedin.com/company/szaboscandic) 

EMX2 purified MaxPab rabbit polyclonal antibody (D01P) MaxPab®

Catalog # : H00002018-D01P

規格 : [100 ug]

[List All](#)

Specification

Product Description: Rabbit polyclonal antibody raised against a full-length human EMX2 protein.

Immunogen: EMX2 (NP_004089.1, 1 a.a. ~ 252 a.a) full-length human protein.

Sequence:
 MFQPAPKRCFTIESLVAKDSPLPARSEDPIRPAALSYANSSPINPFLNGF
 HSAAAAAAGRGVYSNPDLVFAEAVSHPPNPAVPVHPVPPHALAAHPLPS
 SHSPHPLFASQQRDPSTFYPLIHRYYRLGHRFQGNDTSPESFLLHNAL
 ARKPKRIRTAFPSQLLRLEHAFEKNHYVVGAEKQLAHSLSLTETQVKV
 WFQNRRTKFKRQKLEEEGSDSQKKKGTHINRWRIATKQASPEEIDVT
 SDD

Host: Rabbit

Reactivity: Human, Mouse

Quality Control Testing: Antibody reactive against mammalian transfected lysate.

Storage Buffer: In 1x PBS, pH 7.4

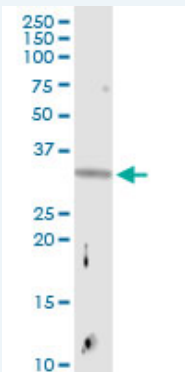
Storage Instruction: Store at -20°C or lower. Aliquot to avoid repeated freezing and thawing.

MSDS:  [Download](#)

Datasheet:  [Download](#)

Applications

Western Blot (Tissue lysate)



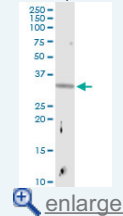
EMX2 MaxPab rabbit polyclonal antibody. Western Blot analysis of EMX2 expression in mouse liver.

 [Protocol Download](#)

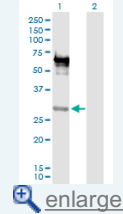
Western Blot (Transfected lysate)

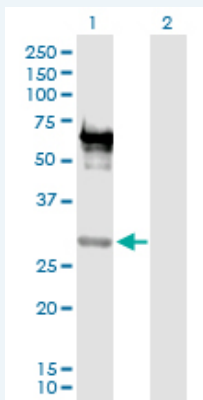
Application Image

Western Blot (Tissue lysate)




Western Blot (Transfected lysate)





Western Blot analysis of EMX2 expression in transfected 293T cell line ([H00002018-T01](#)) by EMX2 MaxPab polyclonal antibody.

Lane 1: EMX2 transfected lysate(27.72 KDa).
Lane 2: Non-transfected lysate.

 [Protocol Download](#)

Gene Information

Entrez GeneID: [2018](#)

GeneBank Accession#: [NM_004098.3](#)

Protein Accession#: [NP_004089.1](#)

Gene Name: EMX2

Gene Alias: -

Gene Description: empty spiracles homeobox 2

Omim ID: [269160](#), [600035](#)

Gene Ontology: [Hyperlink](#)

Gene Summary: This gene encodes a homeobox-containing transcription factor that is the homolog to the 'empty spiracles' gene in Drosophila. Research on this gene in humans has focused on its expression in three tissues: dorsal telencephalon, olfactory neuroepithelium, and urogenital system. It is expressed in the dorsal telencephalon during development in a low rostral-lateral to high caudal-medial gradient and is proposed to pattern the neocortex into defined functional areas. It is also expressed in embryonic and adult olfactory neuroepithelia where it complexes with eukaryotic translation initiation factor 4E (eIF4E) and possibly regulates mRNA transport or translation. In the developing urogenital system, it is expressed in epithelial tissues and is negatively regulated by HOXA10. Alternative splicing results in multiple transcript variants encoding distinct proteins

Other Designations: OTTHUMP00000020578,empty spiracles homolog 2

Related Disease

[Cleft Lip Cleft Palate Depressive Disorder, Major Endometriosis Genetic Predisposition to Disease](#)

