



SZABO SCANDIC

Part of Europa Biosite

Produktinformation



Forschungsprodukte & Biochemikalien



Zellkultur & Verbrauchsmaterial



Diagnostik & molekulare Diagnostik



Laborgeräte & Service

Weitere Information auf den folgenden Seiten!
See the following pages for more information!



Lieferung & Zahlungsart

siehe unsere [Liefer- und Versandbedingungen](#)

Zuschläge

- Mindermengenzuschlag
- Trockeneiszuschlag
- Gefahrgutzuschlag
- Expressversand

SZABO-SCANDIC HandelsgmbH

Quellenstraße 110, A-1100 Wien

T. +43(0)1 489 3961-0

F. +43(0)1 489 3961-7

mail@szabo-scandic.com

www.szabo-scandic.com

[linkedin.com/company/szaboscandic](https://www.linkedin.com/company/szaboscandic) 



EN1 monoclonal antibody (M02), clone 3E5

Catalog # : H00002019-M02

規格 : [100 ug]

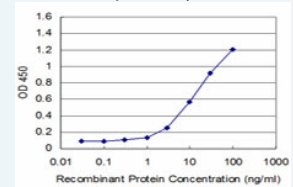
[List All](#)


Specification

Product Description:	Mouse monoclonal antibody raised against a full length recombinant EN1.
Immunogen:	EN1 (NP_001417, 266 a.a. ~ 392 a.a) full length recombinant protein with GST tag. MW of the GST tag alone is 26 KDa.
Sequence:	SQQPLVWPAAWVYCTRYSDRPSSGPRTRKLLKKKNEKEDKRPRTAFTAE QLQRLKAEFQANRYITEQRRQTLAQELSLNESQIKWVFQNKRAKIKKATGI KNGLLALHLMAQGLYNHSTTTVQDKDESE*
Host:	Mouse
Reactivity:	Human
Isotype:	IgG2a Kappa
Quality Control Testing:	Antibody Reactive Against Recombinant Protein.
Storage Buffer:	In 1x PBS, pH 7.4
Storage Instruction:	Store at -20°C or lower. Aliquot to avoid repeated freezing and thawing.
MSDS:	 Download
Datasheet:	 Download

Application Image

Sandwich ELISA (Recombinant protein)

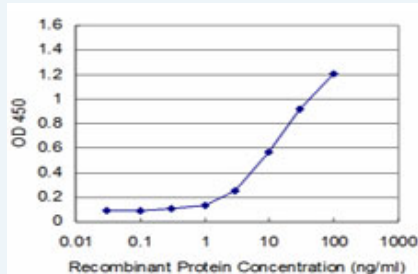


 [enlarge](#)


ELISA

Applications

Sandwich ELISA (Recombinant protein)



Detection limit for recombinant GST tagged EN1 is approximately 1 ng/ml as a capture antibody.

 [Protocol Download](#)

ELISA

Gene Information

Entrez GeneID: [2019](#)

GeneBank [NM_001426](#)

Accession#:

Protein [NP_001417](#)

Accession#:

Gene Name: EN1

Gene Alias: -

Gene Description: engrailed homeobox 1

Omim ID: [131290](#)

Gene Ontology: [Hyperlink](#)

Gene Summary: Homeobox-containing genes are thought to have a role in controlling development. In Drosophila, the 'engrailed' (en) gene plays an important role during development in segmentation, where it is required for the formation of posterior compartments. Different mutations in the mouse homologs, En1 and En2, produced different developmental defects that frequently are lethal. The human engrailed homologs 1 and 2 encode homeodomain-containing proteins and have been implicated in the control of pattern formation during development of the central nervous system. [provided by RefSeq]

Other Designations: OTTHUMP00000162091,engrailed homolog 1

Related Disease

[Cardiovascular Diseases](#) [Diabetes Mellitus, Type 2](#) [Edema](#) [Mental Disorders](#)
[Parkinson disease](#) [Schizophrenia](#) [Sudden Infant Death](#)