



# SZABO SCANDIC

Part of Europa Biosite

## Produktinformation



Forschungsprodukte & Biochemikalien



Zellkultur & Verbrauchsmaterial



Diagnostik & molekulare Diagnostik



Laborgeräte & Service

Weitere Information auf den folgenden Seiten!  
See the following pages for more information!



### Lieferung & Zahlungsart

siehe unsere [Liefer- und Versandbedingungen](#)

### Zuschläge

- Mindermengenzuschlag
- Trockeneiszuschlag
- Gefahrgutzuschlag
- Expressversand

### SZABO-SCANDIC HandelsgmbH

Quellenstraße 110, A-1100 Wien

T. +43(0)1 489 3961-0

F. +43(0)1 489 3961-7

[mail@szabo-scandic.com](mailto:mail@szabo-scandic.com)

[www.szabo-scandic.com](http://www.szabo-scandic.com)

[linkedin.com/company/szaboscandic](https://www.linkedin.com/company/szaboscandic) 

## ENG MaxPab mouse polyclonal antibody (B01) MaxPab®

Catalog # : H00002022-B01

規格 : [ 50 uL ]

[List All](#)

### Specification

**Product Description:** Mouse polyclonal antibody raised against a full-length human ENG protein.

**Immunogen:** ENG (AAH14271.1, 1 a.a. ~ 658 a.a) full-length human protein.

**Sequence:**  
 MDRGTLPLAVALLLASCSLSPTSLAETVHCDLQPVGPERDEVYTTTSQV  
 SKGCVAQAPNAILEVHVLFLFPTGPSQLELTLQASKQNGTWPREVLLV  
 LSVNSSVFLHLQALGIPLHLAYNSSLVTFQEPGVTTELPSFPKTQILEW  
 AAERGPI TSAELNDPQSILLRLGQAQGSLSFCMLEASQDMGRTLEWRP  
 RTPALVRGCHLEGVAGHKEAHILRVLPGHSAGPRTVTVKVELSCAPGDL  
 DAVLILQGPPYVSWLIDANHNMQIWTTEYSFKIFPEKNIRGFKLDPDTPQG  
 LLGEARMLNASIVASFVELPLASIVSLHASSCGGRLQTSPIQTT PPKDT  
 CSPPELLMSLIQTKCADDAMTLVLLKELVAHLKCTITGLTFWDPSCEAEDR  
 GDKFVLRSAISSCGMQVSASMSNEAV/NILSSSSPQRKKVHCLNMDLSL  
 FQLGLYLSPHFLQASNTIEPGQQSFVQVRVSPSVSEFLLQLDSCHLDLG  
 PEGGTVELIQGRAAKGNCVSLSPSPEGDPFRSFLHFYTVPIPKTGTL  
 CTVLRPKTGSQDQEVHRTVFMRLNIISPDLSGCTSKGLVLPVAVLGITFG  
 AFLIGALLTAALWYIYSHTRSPSKREPVVAAPASSESSSTNHSIGSTQS  
 TPCSTSSMA

**Host:** Mouse

**Reactivity:** Human

**Quality Control Testing:** Antibody reactive against mammalian transfected lysate.

**Storage Buffer:** No additive

**Storage Instruction:** Store at -20°C or lower. Aliquot to avoid repeated freezing and thawing.

**Note:** For IHC and IF applications, antibody purification with Protein A will be needed prior to use.

**MSDS:**  [Download](#)

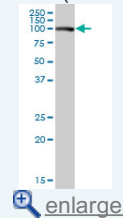
**Datasheet:**  [Download](#)

### Applications

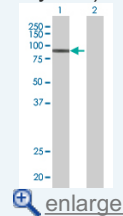
Western Blot (Tissue lysate)

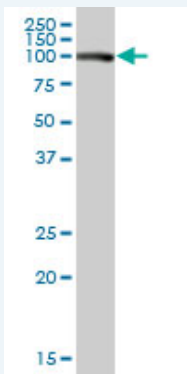
### Application Image

Western Blot (Tissue lysate)



Western Blot (Transfected lysate)

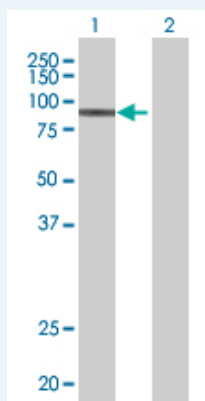




ENG MaxPab polyclonal antibody. Western Blot analysis of ENG expression in human kidney.

 [Protocol Download](#)

#### Western Blot (Transfected lysate)



Western Blot analysis of ENG expression in transfected 293T cell line ([H00002022-T01](#)) by ENG MaxPab polyclonal antibody.

Lane 1: ENG transfected lysate(72.38 KDa).

Lane 2: Non-transfected lysate.

 [Protocol Download](#)

#### Gene Information

**Entrez GeneID:** [2022](#)

**GeneBank** [BC014271.2](#)

**Accession#:**

**Protein** [AAH14271.1](#)

**Accession#:**

**Gene Name:** ENG

**Gene Alias:** CD105,END,FLJ41744,HHT1,ORW,ORW1

**Gene** endoglin

**Description:**

**Omim ID:** [131195](#), [187300](#)

**Gene Ontology:** [Hyperlink](#)

**Gene Summary:** This gene encodes a homodimeric transmembrane protein which is a major glycoprotein of the vascular endothelium. This protein is a component of the transforming growth factor beta receptor complex and it binds TGFB1 and TGFB3 with high affinity. Mutations in this gene cause hereditary hemorrhagic telangiectasia, also known as Osler-Rendu-Weber syndrome 1, an autosomal dominant multisystemic vascular dysplasia. Alternatively spliced transcript variants encoding different isoforms have been found for this gene. [provided by RefSeq

**Other** CD105 antigen,OTTHUMP00000022221,Osler-Rendu-Weber syndrome  
**Designations:** 1

### **Related Disease**

[Aneurysm](#) [Aneurysm, Ruptured](#) [Arteriovenous Malformations](#) [Cardiovascular Diseases](#)  
[Central Nervous System Vascular Malformations](#) [Chromosome Aberrations](#)  
[Diabetes Mellitus, Type 2](#) [Edema](#) [Epistaxis](#) [Genetic Predisposition to Disease](#)  
[Heart Defects, Congenital](#) [Hypertension, Pulmonary](#) [Intracranial Aneurysm](#)  
[Intracranial Arteriovenous Malformations](#) [Kidney Failure, Chronic](#) [Liver Cirrhosis](#)  
[Liver Diseases](#) [Lung Neoplasms](#) [Pre-Eclampsia](#)

... see more

[服務條款](#) | [隱私權政策](#) | [著作及商標](#) | [網站地圖](#)

©2016 亞諾法生技股份有限公司 Abnova Corporation. 版權所有.