



SZABO SCANDIC

Part of Europa Biosite

Produktinformation



Forschungsprodukte & Biochemikalien



Zellkultur & Verbrauchsmaterial



Diagnostik & molekulare Diagnostik



Laborgeräte & Service

Weitere Information auf den folgenden Seiten!
See the following pages for more information!



Lieferung & Zahlungsart

siehe unsere [Liefer- und Versandbedingungen](#)

Zuschläge

- Mindermengenzuschlag
- Trockeneiszuschlag
- Gefahrgutzuschlag
- Expressversand

SZABO-SCANDIC HandelsgmbH

Quellenstraße 110, A-1100 Wien

T. +43(0)1 489 3961-0

F. +43(0)1 489 3961-7

mail@szabo-scandic.com

www.szabo-scandic.com

[linkedin.com/company/szaboscandic](https://www.linkedin.com/company/szaboscandic) 

ENG monoclonal antibody (M26), clone 1E5

Catalog # : H00002022-M26

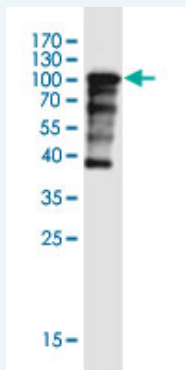
規格 : [50 ug]

[List All](#)

Specification

Product Description:	Mouse monoclonal antibody raised against a full-length recombinant ENG.
Immunogen:	ENG (AAH14271, 27 a.a. ~ 658 a.a) full-length recombinant protein with GST tag. MW of the GST tag alone is 26 KDa.
Sequence:	TVHCDLQPVGPERDEVITYTTSQVSKGCVAQAPNAILEVHVLFLFEP TGP SQLELTLQASKQNGTWPREVLLVLSVNSSVFLHLQALGIPLHLAYNSSLV TFQEPPGVNTELPSPFKTQILEWAAERGPI TSAELNDPQSILLRLGQA QGSLSFCMLEASQDMGRTLEWRPRTPALVRGCHLEGVAGHKEAHILRV LPGHSAGPRTVTVKVELSCAPGDLDAVLILQGPYVSWLIDANHNMQIWT TGEYSFKIFPEKNIRGFKLPDTPQGLLGEARMLNASIVASFVELPLASIVSL HASSCGGRLQTSAPIQTT PPKDTCSPPELLMSLIQTKCADDAMTLVLKKE LVAHLKCTITGLTFWDPSCAEADRGDKFVLRSA YSSCGMQVSASMISNE AVVNILSSSSPQRKKVHCLNMDLSFQLGLYLSPHFLQASNTIEPGQQSF VQVRVSPSVSEFLLQLDSCHLDLGP EGGTVELIQGRAAKGNCVSLSPS PEGDPRFSFLLHFYTVPIPKTGTLSCTVALRPKTGSQDQEVHRTVFMRL NIISPDLSGCTSKGLVLPVAVLGITFGAFLIGALLTAALWYIYSHTRSPSKRE PVVAVAAPASSESSSTNHSIGSTQSTPCSTSSMA
Host:	Mouse
Reactivity:	Human
Isotype:	IgG2b Kappa

Quality Control Testing: Antibody Reactive Against Recombinant Protein.



Western Blot detection against Immunogen (95.26 KDa) .

Storage Buffer: In 1x PBS, pH 7.4

Storage Instruction: Store at -20°C or lower. Aliquot to avoid repeated freezing and thawing.

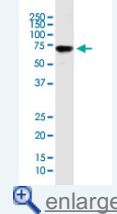
Datasheet: [Download](#)

Applications

Western Blot (Tissue lysate)

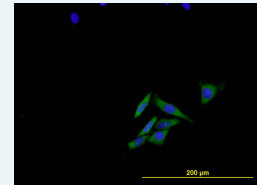
Application Image

Western Blot (Tissue lysate)

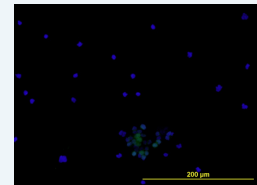


Western Blot (Recombinant protein)

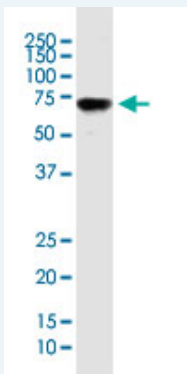
Immunofluorescence



Immunofluorescence



ELISA



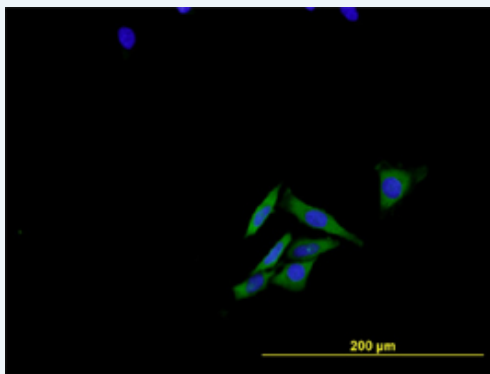
ENG monoclonal antibody (M26), clone 1E5. Western Blot analysis of ENG expression in human lung cancer.

[Protocol Download](#)

Western Blot (Recombinant protein)

[Protocol Download](#)

Immunofluorescence

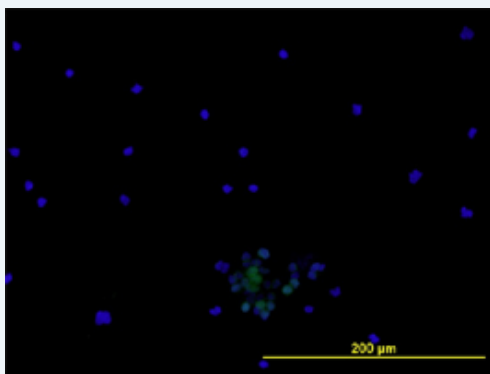


[enlarge this image](#)

Immunofluorescence of monoclonal antibody to ENG on HeLa cell . [antibody concentration 10 ug/ml]

[Protocol Download](#)

Immunofluorescence



[enlarge this image](#)

Immunofluorescence of monoclonal antibody to ENG on PBMCs cell . [antibody concentration 10 ug/ml]

[Protocol Download](#)

ELISA

Gene Information

Entrez GeneID: [2022](#)

GeneBank [BC014271](#)

Accession#:

Protein [AAH14271](#)

Accession#:

Gene Name: ENG

Gene Alias: CD105,END,FLJ41744,HHT1,ORW,ORW1

Gene Description: endoglin

Omim ID: [131195](#), [187300](#)

Gene Ontology: [Hyperlink](#)

Gene Summary: This gene encodes a homodimeric transmembrane protein which is a major glycoprotein of the vascular endothelium. This protein is a component of the transforming growth factor beta receptor complex and it binds TGFB1 and TGFB3 with high affinity. Mutations in this gene cause hereditary hemorrhagic telangiectasia, also known as Osler-Rendu-Weber syndrome 1, an autosomal dominant multisystemic vascular dysplasia. Alternatively spliced transcript variants encoding different isoforms have been found for this gene. [provided by RefSeq]

Other Designations: CD105 antigen,OTTHUMP00000022221,Osler-Rendu-Weber syndrome 1

Related Disease

[Aneurysm](#) [Aneurysm, Ruptured](#) [Arteriovenous Malformations](#) [Cardiovascular Diseases](#)
[Central Nervous System Vascular Malformations](#) [Chromosome Aberrations](#)
[Diabetes Mellitus, Type 2](#) [Edema](#) [Epistaxis](#) [Genetic Predisposition to Disease](#)
[Heart Defects, Congenital](#) [Hypertension, Pulmonary](#) [Intracranial Aneurysm](#)
[Intracranial Arteriovenous Malformations](#) [Kidney Failure, Chronic](#) [Liver Cirrhosis](#)
[Liver Diseases](#) [Lung Neoplasms](#) [Pre-Eclampsia](#)

... see more