



# SZABO SCANDIC

Part of Europa Biosite

## Produktinformation



Forschungsprodukte & Biochemikalien



Zellkultur & Verbrauchsmaterial



Diagnostik & molekulare Diagnostik



Laborgeräte & Service

Weitere Information auf den folgenden Seiten!  
See the following pages for more information!



### Lieferung & Zahlungsart

siehe unsere [Liefer- und Versandbedingungen](#)

### Zuschläge

- Mindermengenzuschlag
- Trockeneiszuschlag
- Gefahrgutzuschlag
- Expressversand

### SZABO-SCANDIC HandelsgmbH

Quellenstraße 110, A-1100 Wien

T. +43(0)1 489 3961-0

F. +43(0)1 489 3961-7

[mail@szabo-scandic.com](mailto:mail@szabo-scandic.com)

[www.szabo-scandic.com](http://www.szabo-scandic.com)

[linkedin.com/company/szaboscandic](https://www.linkedin.com/company/szaboscandic) 

## ENO1 polyclonal antibody (A01)

Catalog # : H00002023-A01

規格 : [ 50 uL ]

List All

### Specification

**Product Description:** Mouse polyclonal antibody raised against a full-length recombinant ENO1.

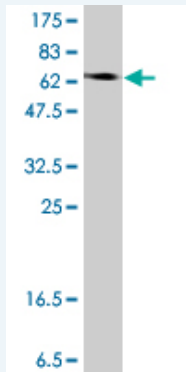
**Immunogen:** ENO1 (AAH11130.1, 1 a.a. ~ 434 a.a) full-length recombinant protein with GST tag.

**Sequence:** MSILKIHAREIFDSRGNPTVEVDLFTSKGLFRAAVPSGASTGIYEALRLD  
NDKTRYMGKGVSKAVEHINKTIAPALVSKLNVTEQEKIDKLMIEDGTEN  
KSKFGANAILGVSLAVCKAGAVEKGVPLYRHIADLAGNSEVILPVPFNVIN  
GGSHAGNKLAMQEFMILPVGAANFREARIGAEVYHNLKNVIKEKYGKDA  
TNVGDEGGFAPNILENKEGLELLKTAIGKAGYTDKVVIGMDVAASEFFRS  
GKYDLDFKSPDDPSRYISPDQLADLYKSFIKDYVVSIEDPFDQDDWGA  
WQKFTASAGIQVVGDDLTVTNPKRIAKAVNEKSCNCLLLKVNQIGSVTES  
LQACKLAQANGWGMVSHRSGETEDTFIADLVVGLCTGQIKTGAPCRS  
ERLAKYNQLLRIEEGLGSKAKFAGRNFRNPLAK

**Host:** Mouse

**Reactivity:** Human, Mouse, Rat

**Quality Control Testing:** Antibody Reactive Against Recombinant Protein.



Western Blot detection against Immunogen (73.85 kDa) .

**Storage Buffer:** 50 % glycerol

**Storage Instruction:** Store at -20°C or lower. Aliquot to avoid repeated freezing and thawing.

**MSDS:** [Download](#)

**Datasheet:** [Download](#)

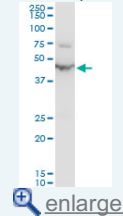
### Publication Reference

1. [Myomegalin is a novel A-kinase anchoring protein involved in the phosphorylation of cardiac myosin binding protein C.](#)  
Uys GM, Ramburan A, Loos B, Kinnear CJ, Korkie LJ, Mouton J, Riedemann J, Moolman-Smook JC. BMC Cell Biol. 2011 May 10;12:18.

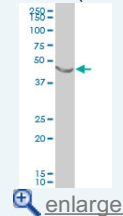
### Applications

### Application Image

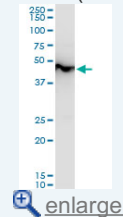
Western Blot (Cell lysate)



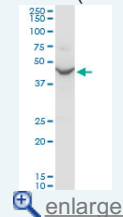
Western Blot (Cell lysate)



Western Blot (Cell lysate)



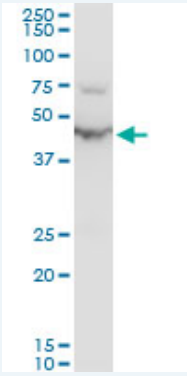
Western Blot (Cell lysate)



Western Blot (Recombinant protein)

ELISA

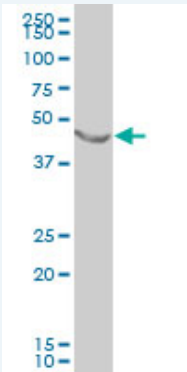
**Western Blot (Cell lysate)**




ENO1 polyclonal antibody (A01), Lot # SFU4050831QCS1. Western Blot analysis of ENO1 expression in PC-12.

 [Protocol Download](#)

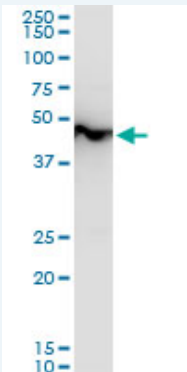
**Western Blot (Cell lysate)**



ENO1 polyclonal antibody (A01), Lot # SFU4050831QCS1 Western Blot analysis of ENO1 expression in IMR-32 ( Cat # L008V1 ).

 [Protocol Download](#)

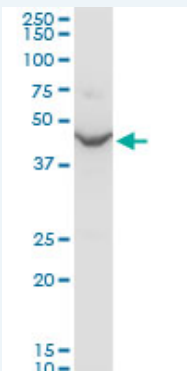
**Western Blot (Cell lysate)**



ENO1 polyclonal antibody (A01), Lot # SFU4050831QCS1. Western Blot analysis of ENO1 expression in Raw 264.7.

 [Protocol Download](#)

**Western Blot (Cell lysate)**



ENO1 polyclonal antibody (A01), Lot # SFU4050831QCS1. Western Blot analysis of ENO1

expression in NIH/3T3.

 [Protocol Download](#)

---

### Western Blot (Recombinant protein)

 [Protocol Download](#)

---

### ELISA

---

### Gene Information

**Entrez GeneID:** [2023](#)

**GeneBank Accession#:** [BC011130](#)

**Protein Accession#:** [AAH11130.1](#)

**Gene Name:** ENO1

**Gene Alias:** ENO1L1,MBP-1,MPB1,NNE,PPH

**Gene Description:** enolase 1, (alpha)

**Omim ID:** [172430](#)

**Gene Ontology:** [Hyperlink](#)

**Gene Summary:** This gene encodes one of three enolase isoenzymes found in mammals; it encodes alpha-enolase, a homodimeric soluble enzyme, and also encodes a shorter monomeric structural lens protein, tau-crystallin. The two proteins are made from the same message. The full length protein, the isoenzyme, is found in the cytoplasm. The shorter protein is produced from an alternative translation start, is localized to the nucleus, and has been found to bind to an element in the c-myc promoter. A pseudogene has been identified that is located on the other arm of the same chromosome. [provided by RefSeq]

**Other Designations:** 2-phospho-D-glycerate hydro-lyase,MYC promoter-binding protein 1,OTTHUMP0000001706,alpha enolase like 1,enolase 1,non-neural enolase,phosphopyruvate hydratase,tau-crystallin

---

### Gene Pathway

[Biosynthesis of alkaloids derived from histidine and purine](#)  
[Biosynthesis of alkaloids derived from ornithine, lysine and nicotinic acid](#)  
[Biosynthesis of alkaloids derived from shikimate pathway](#)  
[Biosynthesis of alkaloids derived from terpenoid and polyketide](#)  
[Biosynthesis of phenylpropanoids](#) [Biosynthesis of plant hormones](#)  
[Biosynthesis of terpenoids and steroids](#) [Glycolysis / Gluconeogenesis](#) [Metabolic pathways](#)  
[RNA degradation](#)

---

### Related Disease

[Myocardial Infarction](#)