



SZABO SCANDIC

Part of Europa Biosite

Produktinformation



Forschungsprodukte & Biochemikalien



Zellkultur & Verbrauchsmaterial



Diagnostik & molekulare Diagnostik



Laborgeräte & Service

Weitere Information auf den folgenden Seiten!
See the following pages for more information!



Lieferung & Zahlungsart

siehe unsere [Liefer- und Versandbedingungen](#)

Zuschläge

- Mindermengenzuschlag
- Trockeneiszuschlag
- Gefahrgutzuschlag
- Expressversand

SZABO-SCANDIC HandelsgmbH

Quellenstraße 110, A-1100 Wien

T. +43(0)1 489 3961-0

F. +43(0)1 489 3961-7

mail@szabo-scandic.com

www.szabo-scandic.com

[linkedin.com/company/szaboscandic](https://www.linkedin.com/company/szaboscandic) 

ENO1 purified MaxPab rabbit polyclonal antibody (D01P) MaxPab®

Catalog # : H00002023-D01P

規格 : [100 ug]

[List All](#)

Specification

Product Description: Rabbit polyclonal antibody raised against a full-length human ENO1 protein.

Immunogen: ENO1 (NP_001419.1, 1 a.a. ~ 434 a.a) full-length human protein.

Sequence:
 MSILKIHAREIFDSRGNPTVEVDLFTSKGLFRAAVPSGASTGIYEALERD
 NDKTRYMGKGVSKAVEHINKTIAPALVSKLNVTEQEKIDKLMIEDGTEN
 KSKFGANAILGVSLAVCKAGAVEKGVPLYRHIADLAGNSEVILPVPAFNVIN
 GGS HAGNKLAMQEFMILPVGAANFREAMRIGAEVYHNLKNVIKEYGKDA
 TNVGDDEGGFAPNILENKEGLELLKTAIGKAGYTDKVVIGMDVAASEFFRS
 GKYDLDFKSPDDPSRYISPDQLADLYKSFIDYPVVSIEDPFDQDDWGA
 WQKFTASAGIQVVGDDLTVTNPKRIAKAVNEKSCNCLLLKVNQIGSVTES
 LQACKLAQANGWGMVSHRSGETEDTFIADLVVGLCTGQIKTGAPCRS
 ERLAKYNQLLRIEEELGSKAKFAGRNFNRNPLAK

Host: Rabbit

Reactivity: Human

Quality Control Testing: Antibody reactive against mammalian transfected lysate.

Storage Buffer: In 1x PBS, pH 7.4

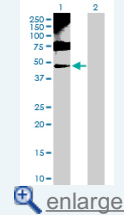
Storage Instruction: Store at -20°C or lower. Aliquot to avoid repeated freezing and thawing.

MSDS: [Download](#)

Datasheet: [Download](#)

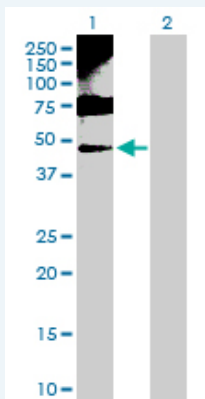
Application Image

Western Blot (Transfected lysate)



Applications

Western Blot (Transfected lysate)



Western Blot analysis of ENO1 expression in transfected 293T cell line (H00002023-T01) by ENO1 MaxPab polyclonal antibody.

Lane 1: ENO1 transfected lysate(47.20 KDa).

Lane 2: Non-transfected lysate.

Gene Information

Entrez GeneID: [2023](#)

GeneBank Accession#: [NM_001428.2](#)

Protein Accession#: [NP_001419.1](#)

Gene Name: ENO1

Gene Alias: ENO1L1,MBP-1,MPB1,NNE,PPH

Gene Description: enolase 1, (alpha)

Omim ID: [172430](#)

Gene Ontology: [Hyperlink](#)

Gene Summary: This gene encodes one of three enolase isoenzymes found in mammals; it encodes alpha-enolase, a homodimeric soluble enzyme, and also encodes a shorter monomeric structural lens protein, tau-crystallin. The two proteins are made from the same message. The full length protein, the isoenzyme, is found in the cytoplasm. The shorter protein is produced from an alternative translation start, is localized to the nucleus, and has been found to bind to an element in the c-myc promoter. A pseudogene has been identified that is located on the other arm of the same chromosome. [provided by RefSeq]

Other Designations: 2-phospho-D-glycerate hydro-lyase,MYC promoter-binding protein 1,OTTHUMP00000001706,alpha enolase like 1,enolase 1,non-neural enolase,phosphopyruvate hydratase,tau-crystallin

Gene Pathway

[Biosynthesis of alkaloids derived from histidine and purine](#)
[Biosynthesis of alkaloids derived from ornithine, lysine and nicotinic acid](#)
[Biosynthesis of alkaloids derived from shikimate pathway](#)
[Biosynthesis of alkaloids derived from terpenoid and polyketide](#)
[Biosynthesis of phenylpropanoids](#) [Biosynthesis of plant hormones](#)
[Biosynthesis of terpenoids and steroids](#) [Glycolysis / Gluconeogenesis](#) [Metabolic pathways](#)
[RNA degradation](#)

Related Disease

[Myocardial Infarction](#)