



# SZABO SCANDIC

Part of Europa Biosite

## Produktinformation



Forschungsprodukte & Biochemikalien



Zellkultur & Verbrauchsmaterial



Diagnostik & molekulare Diagnostik



Laborgeräte & Service

Weitere Information auf den folgenden Seiten!  
See the following pages for more information!



### Lieferung & Zahlungsart

siehe unsere [Liefer- und Versandbedingungen](#)

### Zuschläge

- Mindermengenzuschlag
- Trockeneiszuschlag
- Gefahrgutzuschlag
- Expressversand

### SZABO-SCANDIC HandelsgmbH

Quellenstraße 110, A-1100 Wien

T. +43(0)1 489 3961-0

F. +43(0)1 489 3961-7

[mail@szabo-scandic.com](mailto:mail@szabo-scandic.com)

[www.szabo-scandic.com](http://www.szabo-scandic.com)

[linkedin.com/company/szaboscandic](https://www.linkedin.com/company/szaboscandic) 

## ENO1 (Human) IP-WB Antibody Pair

Catalog # : H00002023-PW1

規格 : [ 1 Set ]

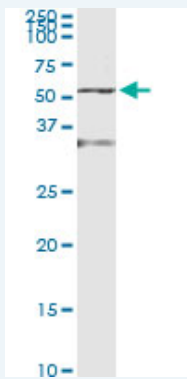
List All

### Specification

**Product Description:** This IP-WB antibody pair set comes with one antibody for immunoprecipitation and another to detect the precipitated protein in western blot.

**Reactivity:** Human

**Quality Control Testing:** Immunoprecipitation-Western Blot (IP-WB)



Immunoprecipitation of ENO1 transfected lysate using mouse monoclonal anti-ENO1 and Protein A Magnetic Bead ([U0007](#)), and immunoblotted with rabbit polyclonal anti-ENO1.

**Supplied Product:** Antibody pair set content:  
1. Antibody pair for IP: mouse monoclonal anti-ENO1 (300 ug)  
2. Antibody pair for WB: rabbit polyclonal anti-ENO1 (50 ul)

**Storage Instruction:** Store reagents of the antibody pair set at -20°C or lower. Please aliquot to avoid repeated freeze thaw cycle. Reagents should be returned to -20°C storage immediately after use.

**MSDS:**  [Download](#)

### Applications

Immunoprecipitation-Western Blot

 [Protocol Download](#)

### Gene Information

**Entrez GeneID:** [2023](#)

**Gene Name:** ENO1

**Gene Alias:** ENO1L1,MBP-1,MPB1,NNE,PPH

**Gene Description:** enolase 1, (alpha)

**Omim ID:** [172430](#)

**Gene Ontology:** [Hyperlink](#)

### Application Image

Immunoprecipitation-Western Blot

**Gene Summary:** This gene encodes one of three enolase isoenzymes found in mammals; it encodes alpha-enolase, a homodimeric soluble enzyme, and also encodes a shorter monomeric structural lens protein, tau-crystallin. The two proteins are made from the same message. The full length protein, the isoenzyme, is found in the cytoplasm. The shorter protein is produced from an alternative translation start, is localized to the nucleus, and has been found to bind to an element in the c-myc promoter. A pseudogene has been identified that is located on the other arm of the same chromosome. [provided by RefSeq]

**Other Designations:** 2-phospho-D-glycerate hydro-lyase,MYC promoter-binding protein 1,OTTHUMP00000001706,alpha enolase like 1,enolase 1,non-neural enolase,phosphopyruvate hydratase,tau-crystallin

### Gene Pathway

[Biosynthesis of alkaloids derived from histidine and purine](#)  
[Biosynthesis of alkaloids derived from ornithine, lysine and nicotinic acid](#)  
[Biosynthesis of alkaloids derived from shikimate pathway](#)  
[Biosynthesis of alkaloids derived from terpenoid and polyketide](#)  
[Biosynthesis of phenylpropanoids](#) [Biosynthesis of plant hormones](#)  
[Biosynthesis of terpenoids and steroids](#) [Glycolysis / Gluconeogenesis](#) [Metabolic pathways](#)  
[RNA degradation](#)

### Related Disease

[Myocardial Infarction](#)

[服務條款](#) | [隱私權政策](#) | [著作及商標](#) | [網站地圖](#)

©2016 亞諾法生技股份有限公司 Abnova Corporation. 版權所有.