



# SZABO SCANDIC

Part of Europa Biosite

## Produktinformation



Forschungsprodukte & Biochemikalien



Zellkultur & Verbrauchsmaterial



Diagnostik & molekulare Diagnostik



Laborgeräte & Service

Weitere Information auf den folgenden Seiten!  
See the following pages for more information!



### Lieferung & Zahlungsart

siehe unsere [Liefer- und Versandbedingungen](#)

### Zuschläge

- Mindermengenzuschlag
- Trockeneiszuschlag
- Gefahrgutzuschlag
- Expressversand

### SZABO-SCANDIC HandelsgmbH

Quellenstraße 110, A-1100 Wien

T. +43(0)1 489 3961-0

F. +43(0)1 489 3961-7

[mail@szabo-scandic.com](mailto:mail@szabo-scandic.com)

[www.szabo-scandic.com](http://www.szabo-scandic.com)

[linkedin.com/company/szaboscandic](https://www.linkedin.com/company/szaboscandic) 

# ENO1P purified MaxPab mouse polyclonal antibody (B01P) MaxPab®

Catalog # : H00002025-B01P

規格 : [ 50 ug ]

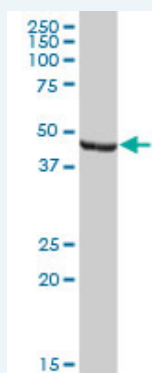
[List All](#)

## Specification

<b>Product Description:</b>	Mouse polyclonal antibody raised against a full-length human ENO1P protein.
<b>Immunogen:</b>	ENO1P (AAH46928.1, 1 a.a. ~ 388 a.a) full-length human protein.
<b>Sequence:</b>	MSILKIHARELFD SRGNPTVEVDLFTSEGLFRAAVPSGASTGIYEVLELQD NDKTRYMGKGVSKPVEPINKTIAPVLVSKKLNVTEQEKIDKLMIEDGTEN KSKFGANAILGVSLAACKASAVEKGVPL YHHIADLSGNSKVILPVPVFNIN GSSHAVTKLAMQEFMVLVPGAANFREAMPIGAEVYHSLKNVIKEKYGKDA TGVGDGGAFAPNILENKEGLELLKTAIGKAGYTDKVI VSM DVEASEFFRS GKYDLEFKFLDDPTRYISPDCLADLYKSF IKNYPVVSTEDPFDQDDWGA WQKFTASAGIQVVEDDLRVTNPKRTASAVNEKCCNCLLLKVNQIRSVTES LQACKLAQANGWCVMPHHSGETENTFITDLVWGL
<b>Host:</b>	Mouse
<b>Reactivity:</b>	Human
<b>Quality Control Testing:</b>	Antibody reactive against mammalian transfected lysate.
<b>Storage Buffer:</b>	In 1x PBS, pH 7.4
<b>Storage Instruction:</b>	Store at -20°C or lower. Aliquot to avoid repeated freezing and thawing.
<b>MSDS:</b>	<a href="#">Download</a>
<b>Datasheet:</b>	<a href="#">Download</a>

## Applications

### Western Blot (Tissue lysate)



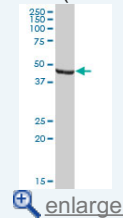
ENO1P MaxPab polyclonal antibody. Western Blot analysis of ENO1P expression in human kidney.

[Protocol Download](#)

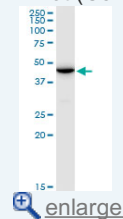
### Western Blot (Cell lysate)

## Application Image

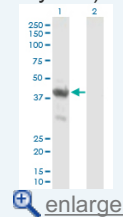
### Western Blot (Tissue lysate)



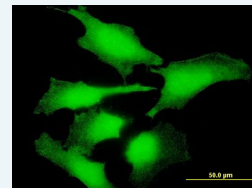
### Western Blot (Cell lysate)

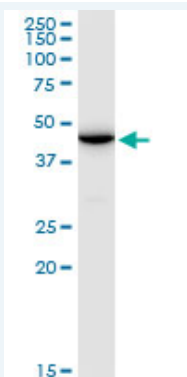


### Western Blot (Transfected lysate)



### Immunofluorescence

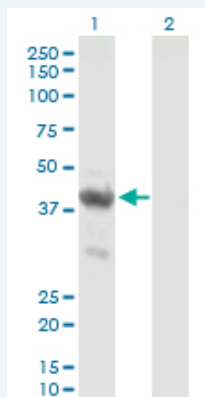




ENO1P MaxPab polyclonal antibody. Western Blot analysis of ENO1P expression in HepG2.

[Protocol Download](#)

#### Western Blot (Transfected lysate)



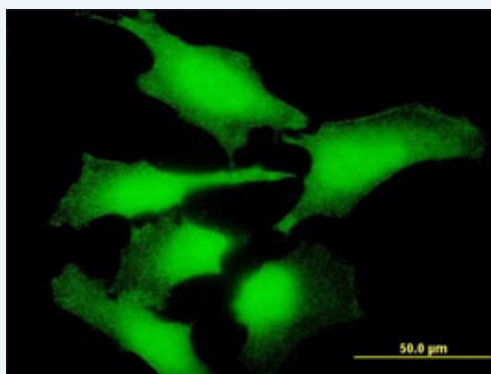
Western Blot analysis of ENO1P expression in transfected 293T cell line ([H00002025-T02](#)) by ENO1P MaxPab polyclonal antibody.

Lane 1: ENO1P transfected lysate(42.68 KDa).

Lane 2: Non-transfected lysate.

[Protocol Download](#)

#### Immunofluorescence



[enlarge this image](#)

Immunofluorescence of purified MaxPab antibody to ENO1P on HeLa cell. [antibody concentration 10 ug/ml]

[Protocol Download](#)

#### Gene Information

Entrez GeneID: [2025](#)

GeneBank [BC046928](#)

Accession#:

Protein [AAH46928.1](#)

Accession#:

Gene Name: ENO1P

**Gene Alias:** -

**Gene** enolase 1, (alpha) pseudogene

**Description:**

**Gene Ontology:** [Hyperlink](#)

**Other** -

**Designations:**

---

[服務條款](#) | [隱私權政策](#) | [著作及商標](#) | [網站地圖](#)

©2016 亞諾法生技股份有限公司 Abnova Corporation. 版權所有.