



SZABO SCANDIC

Part of Europa Biosite

Produktinformation



Forschungsprodukte & Biochemikalien



Zellkultur & Verbrauchsmaterial



Diagnostik & molekulare Diagnostik



Laborgeräte & Service

Weitere Information auf den folgenden Seiten!
See the following pages for more information!



Lieferung & Zahlungsart

siehe unsere [Liefer- und Versandbedingungen](#)

Zuschläge

- Mindermengenzuschlag
- Trockeneiszuschlag
- Gefahrgutzuschlag
- Expressversand

SZABO-SCANDIC HandelsgmbH

Quellenstraße 110, A-1100 Wien

T. +43(0)1 489 3961-0

F. +43(0)1 489 3961-7

mail@szabo-scandic.com

www.szabo-scandic.com

[linkedin.com/company/szaboscandic](https://www.linkedin.com/company/szaboscandic) 

ENO2 MaxPab mouse polyclonal antibody (B01) MaxPab®

Catalog # : H00002026-B01

規格 : [50 uL]

[List All](#)

Specification

Product Description: Mouse polyclonal antibody raised against a full-length human ENO2 protein.

Immunogen: ENO2 (NP_001966, 1 a.a. ~ 434 a.a) full-length human protein.

Sequence:
 MSIEKIWAREILDSRGNPTVEVDLYTAKGLFRAAVPSGASTGIYEALELRD
 GDKQRYLGKGVLKAVDHINSTITAPALISSGLSVVEQEKLNDLMELDGTEN
 KSKFGANAILGVSLAVCKAGAAERELPLYRHIAQLAGNSDLILPVPAFNVIN
 GGSAGNKLAMQEFMILPVGAESFRDAMRLGAEVYHTLKGVIKDKYGKD
 ATNVGDEGGFAPNILENSEALELVKEAIDKAGYTEKIVIGMDVAASEFYRD
 GKYDLDFKSPTDPSRYITGDQLGALYQDFVRDYPVVSIEDPFDQDDWAA
 WSKFTANVGIIQVGGDLTVTNPKRIERAVEEKACNCLLLKVNQIGSVTEAI
 QACKLAQENGWGMVSHRSGETEDTFIADLVGLCTGQIKTGAPCRSE
 RLAKYNQLMRIEELGDEARFAGHNFRNPSVL

Host: Mouse

Reactivity: Human

Quality Control Testing: Antibody reactive against mammalian transfected lysate.

Storage Buffer: No additive

Storage Instruction: Store at -20°C or lower. Aliquot to avoid repeated freezing and thawing.

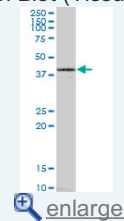
Note: For IHC and IF applications, antibody purification with Protein A will be needed prior to use.

MSDS:  [Download](#)

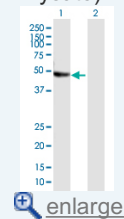
Datasheet:  [Download](#)

Application Image

Western Blot (Tissue lysate)

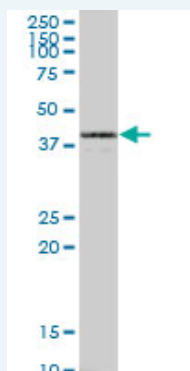


Western Blot (Transfected lysate)




Applications

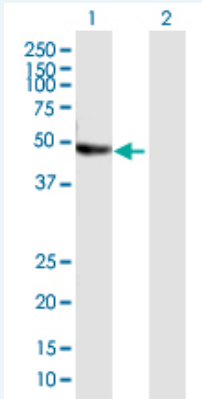
Western Blot (Tissue lysate)



ENO2 MaxPab polyclonal antibody. Western Blot analysis of ENO2 expression in human stomach.

 [Protocol Download](#)

Western Blot (Transfected lysate)



Western Blot analysis of ENO2 expression in transfected 293T cell line ([H00002026-T01](#)) by ENO2 MaxPab polyclonal antibody.

Lane 1: ENO2 transfected lysate(47.74 KDa).

Lane 2: Non-transfected lysate.

 [Protocol Download](#)

Gene Information

Entrez GeneID: [2026](#)

GeneBank [NM_001975](#)

Accession#:

Protein [NP_001966](#)

Accession#:

Gene Name: ENO2

Gene Alias: NSE

Gene enolase 2 (gamma, neuronal)

Description:

Omim ID: [131360](#)

Gene Ontology: [Hyperlink](#)

Gene Summary: This gene encodes one of the three enolase isoenzymes found in mammals. This isoenzyme, a homodimer, is found in mature neurons and cells of neuronal origin. A switch from alpha enolase to gamma enolase occurs in neural tissue during development in rats and primates. [provided by RefSeq]

Other Designations: 2-phospho-D-glycerate hydrolyase,enolase 2,neural enolase,neuron specific gamma enolase,neurone-specific enolase

Gene Pathway

[Biosynthesis of alkaloids derived from histidine and purine](#)

[Biosynthesis of alkaloids derived from ornithine, lysine and nicotinic acid](#)

[Biosynthesis of alkaloids derived from shikimate pathway](#)

[Biosynthesis of alkaloids derived from terpenoid and polyketide](#)

[Biosynthesis of phenylpropanoids](#) [Biosynthesis of plant hormones](#)

[Biosynthesis of terpenoids and steroids](#) [Glycolysis / Gluconeogenesis](#) [Metabolic pathways](#)

[RNA degradation](#)

Related Disease

[Alzheimer Disease](#) [Alzheimer disease](#) [Cerebral Amyloid Angiopathy](#)

[Genetic Predisposition to Disease](#) [Neuroblastoma](#) [Schizophrenia](#) [Schizophrenia](#)

