



# SZABO SCANDIC

Part of Europa Biosite

## Produktinformation



Forschungsprodukte & Biochemikalien



Zellkultur & Verbrauchsmaterial



Diagnostik & molekulare Diagnostik



Laborgeräte & Service

Weitere Information auf den folgenden Seiten!  
See the following pages for more information!



### Lieferung & Zahlungsart

siehe unsere [Liefer- und Versandbedingungen](#)

### Zuschläge

- Mindermengenzuschlag
- Trockeneiszuschlag
- Gefahrgutzuschlag
- Expressversand

### SZABO-SCANDIC HandelsgmbH

Quellenstraße 110, A-1100 Wien

T. +43(0)1 489 3961-0

F. +43(0)1 489 3961-7

[mail@szabo-scandic.com](mailto:mail@szabo-scandic.com)

[www.szabo-scandic.com](http://www.szabo-scandic.com)

[linkedin.com/company/szaboscandic](https://www.linkedin.com/company/szaboscandic) 

# ENO2 purified MaxPab rabbit polyclonal antibody (D01P) MaxPab®

Catalog # : H00002026-D01P

規格 : [ 100 ug ]

[List All](#)

## Specification

**Product Description:** Rabbit polyclonal antibody raised against a full-length human ENO2 protein.

**Immunogen:** ENO2 (NP\_001966.1, 1 a.a. ~ 434 a.a) full-length human protein.

**Sequence:**  
 MSIEKIWAREILDSRGNPTVEVDLYTAKGLFRAAVPSGASTGIYEALRLD  
 GDKQRYLGKGVLKAVDHINSTITAPALISSGLSVVEQEKLNDLMELDGTEN  
 KSKFGANAILGVSLAVCKAGAAERELPLYRHIAQLAGNSDLILVPAFNVIN  
 GGSAGNKLAMQEFMILPVGAESFRDAMRLGAEVYHTLKGVIKDKYGKD  
 ATNVGDEGGFAPNILENSEALELVKEAIDKAGYTEKIVIGMDVAASEFYRD  
 GKYDLDFKSPTDPSRYITGDQLGALYQDFVRDYPVVSIEDPFDQDDWAA  
 WSKFTANVGIIQVGGDLTVTNPKRIERAEEKACNLLLKVNQIGSVTEAI  
 QACKLAQENGWGMVSHRSGETEDTFIADLVGLCTGQIKTGAPCRSE  
 RLAKYNQLMRIEEELGDEARFAGHNFRNPSVL

**Host:** Rabbit

**Reactivity:** Human, Mouse

**Quality Control Testing:** Antibody reactive against mammalian transfected lysate.

**Storage Buffer:** In 1x PBS, pH 7.4

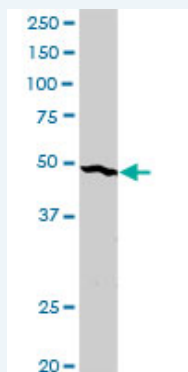
**Storage Instruction:** Store at -20°C or lower. Aliquot to avoid repeated freezing and thawing.

**MSDS:** [Download](#)

**Datasheet:** [Download](#)

## Applications

### Western Blot (Tissue lysate)



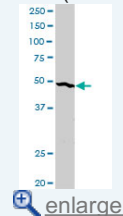
ENO2 MaxPab rabbit polyclonal antibody. Western Blot analysis of ENO2 expression in mouse kidney.

[Protocol Download](#)

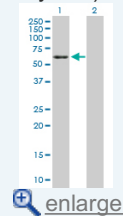
### Western Blot (Transfected lysate)

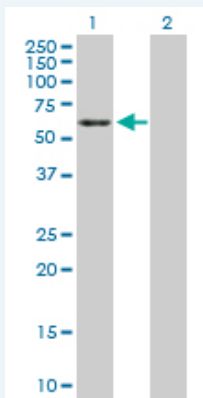
## Application Image

### Western Blot (Tissue lysate)



### Western Blot (Transfected lysate)





Western Blot analysis of ENO2 expression in transfected 293T cell line ([H00002026-T01](#)) by ENO2 MaxPab polyclonal antibody.

Lane 1: ENO2 transfected lysate(47.30 KDa).

Lane 2: Non-transfected lysate.

Protocol Download

## Gene Information

Entrez GeneID: [2026](#)

GeneBank [NM\\_001975](#)

Accession#:

Protein [NP\\_001966.1](#)

Accession#:

Gene Name: ENO2

Gene Alias: NSE

Gene enolase 2 (gamma, neuronal)

Description:

Omim ID: [131360](#)

Gene Ontology: [Hyperlink](#)

**Gene Summary:** This gene encodes one of the three enolase isoenzymes found in mammals. This isoenzyme, a homodimer, is found in mature neurons and cells of neuronal origin. A switch from alpha enolase to gamma enolase occurs in neural tissue during development in rats and primates. [provided by RefSeq]

**Other Designations:** 2-phospho-D-glycerate hydrolyase, enolase 2, neural enolase, neuron specific gamma enolase, neurone-specific enolase

## Gene Pathway

[Biosynthesis of alkaloids derived from histidine and purine](#)

[Biosynthesis of alkaloids derived from ornithine, lysine and nicotinic acid](#)

[Biosynthesis of alkaloids derived from shikimate pathway](#)

[Biosynthesis of alkaloids derived from terpenoid and polyketide](#)

[Biosynthesis of phenylpropanoids](#) [Biosynthesis of plant hormones](#)

[Biosynthesis of terpenoids and steroids](#) [Glycolysis / Gluconeogenesis](#) [Metabolic pathways](#)

[RNA degradation](#)

## Related Disease

[Alzheimer Disease](#) [Alzheimer disease](#) [Cerebral Amyloid Angiopathy](#)

[Genetic Predisposition to Disease](#) [Neuroblastoma](#) [Schizophrenia](#) [Schizophrenia](#)

