



SZABO SCANDIC

Part of Europa Biosite

Produktinformation



Forschungsprodukte & Biochemikalien



Zellkultur & Verbrauchsmaterial



Diagnostik & molekulare Diagnostik



Laborgeräte & Service

Weitere Information auf den folgenden Seiten!
See the following pages for more information!



Lieferung & Zahlungsart

siehe unsere [Liefer- und Versandbedingungen](#)

Zuschläge

- Mindermengenzuschlag
- Trockeneiszuschlag
- Gefahrgutzuschlag
- Expressversand

SZABO-SCANDIC HandelsgmbH

Quellenstraße 110, A-1100 Wien

T. +43(0)1 489 3961-0

F. +43(0)1 489 3961-7

mail@szabo-scandic.com

www.szabo-scandic.com

[linkedin.com/company/szaboscandic](https://www.linkedin.com/company/szaboscandic) 

ENO2 monoclonal antibody (M01), clone 1A3

Catalog # : H00002026-M01

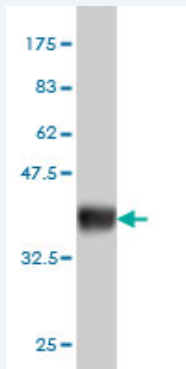
規格 : [100 ug]

List All

Specification

Product Description:	Mouse monoclonal antibody raised against a partial recombinant ENO2.
Immunogen:	ENO2 (AAH02745, 325 a.a. ~ 434 a.a) partial recombinant protein with GST tag. MW of the GST tag alone is 26 KDa.
Sequence:	PKRIERA VEEKACNCLLLKVNQIGSVTEAIQACKLAQENGWGMVSHRS GETEDTFIADLVVGLCTGQIKTGAPCRSERLAKYNQLMRIEEELGDEARF AGHNFRNPSVL
Host:	Mouse
Reactivity:	Human
Isotype:	IgG2a Kappa

Quality Control Testing: Antibody Reactive Against Recombinant Protein.



Western Blot detection against Immunogen (37.84 KDa) .

Storage Buffer: In 1x PBS, pH 7.4

Storage Instruction: Store at -20°C or lower. Aliquot to avoid repeated freezing and thawing.

MSDS: [Download](#)

Datasheet: [Download](#)

Publication Reference

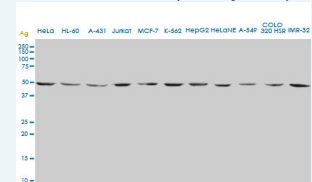
1. Identification of alpha-Enolase as an Autoantigen in Lung Cancer: Its Overexpression Is Associated with Clinical Outcomes.
Chang GC, Liu KJ, Hsieh CL, Hu TS, Charoenfuprasert S, Liu HK, Luh KT, Hsu LH, Wu CW, Ting CC, Chen CY, Chen KC, Yang TY, Chou TY, Wang WH, Whang-Peng J, Shih NY. Clin Cancer Res. 2006 Oct 1;12(19):5746-54.

Applications

Western Blot (Cell lysate)

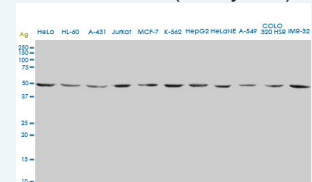
Application Image

Western Blot (Cell lysate)



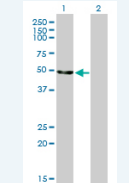
[enlarge](#)

Western Blot (Cell lysate)



[enlarge](#)

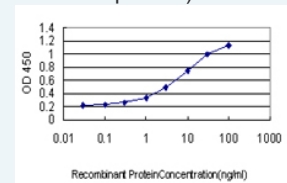
Western Blot (Transfected lysate)



[enlarge](#)

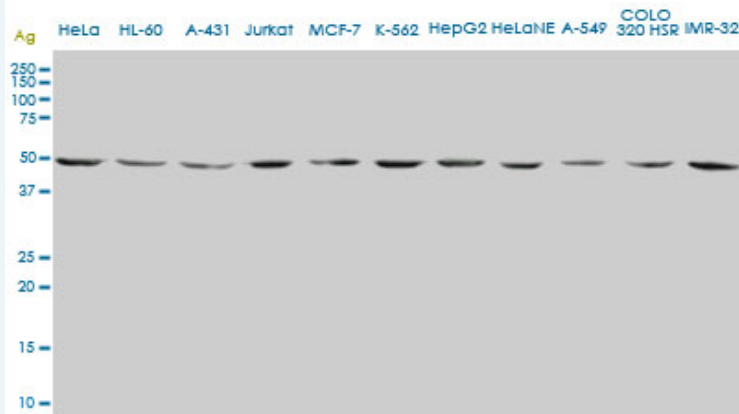
Western Blot (Recombinant protein)

Sandwich ELISA (Recombinant protein)



[enlarge](#)

ELISA



ENO2 monoclonal antibody (M01), clone 1A3. Western Blot analysis of ENO2 expression in HeLa (Cat # L013V1).

[Protocol Download](#)

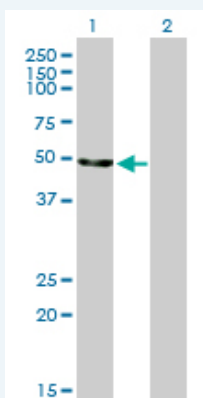
Western Blot (Cell lysate)



ENO2 monoclonal antibody (M01), clone 1A3. Western Blot analysis of ENO2 expression in different cell lines.

[Protocol Download](#)

Western Blot (Transfected lysate)



Western Blot analysis of ENO2 expression in transfected 293T cell line by ENO2 monoclonal antibody (M01), clone 1A3.

Lane 1: ENO2 transfected lysate(47.3 KDa).

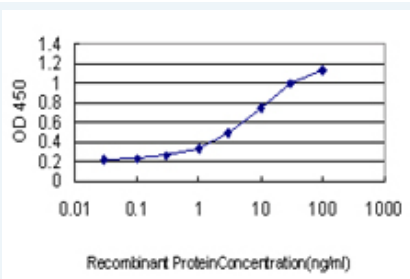
Lane 2: Non-transfected lysate.

[Protocol Download](#)

Western Blot (Recombinant protein)

[Protocol Download](#)

Sandwich ELISA (Recombinant protein)



Detection limit for recombinant GST tagged ENO2 is approximately 0.1ng/ml as a capture antibody.

 [Protocol Download](#)

ELISA

Gene Information

Entrez GeneID: [2026](#)

GeneBank [BC002745](#)

Accession#:

Protein [AAH02745](#)

Accession#:

Gene Name: ENO2

Gene Alias: NSE

Gene enolase 2 (gamma, neuronal)

Description:

Omim ID: [131360](#)

Gene Ontology: [Hyperlink](#)

Gene Summary: This gene encodes one of the three enolase isoenzymes found in mammals. This isoenzyme, a homodimer, is found in mature neurons and cells of neuronal origin. A switch from alpha enolase to gamma enolase occurs in neural tissue during development in rats and primates. [provided by RefSeq]

Other Designations: 2-phospho-D-glycerate hydrolyase, enolase 2, neural enolase, neuron specific gamma enolase, neurone-specific enolase

Gene Pathway

[Biosynthesis of alkaloids derived from histidine and purine](#)

[Biosynthesis of alkaloids derived from ornithine, lysine and nicotinic acid](#)

[Biosynthesis of alkaloids derived from shikimate pathway](#)

[Biosynthesis of alkaloids derived from terpenoid and polyketide](#)

[Biosynthesis of phenylpropanoids](#) [Biosynthesis of plant hormones](#)

[Biosynthesis of terpenoids and steroids](#) [Glycolysis / Gluconeogenesis](#) [Metabolic pathways](#)

[RNA degradation](#)

Related Disease

[Alzheimer Disease](#) [Alzheimer disease](#) [Cerebral Amyloid Angiopathy](#)

[Genetic Predisposition to Disease](#) [Neuroblastoma](#) [Schizophrenia](#) [Schizophrenia](#)