



SZABO SCANDIC

Part of Europa Biosite

Produktinformation



Forschungsprodukte & Biochemikalien



Zellkultur & Verbrauchsmaterial



Diagnostik & molekulare Diagnostik



Laborgeräte & Service

Weitere Information auf den folgenden Seiten!
See the following pages for more information!



Lieferung & Zahlungsart

siehe unsere [Liefer- und Versandbedingungen](#)

Zuschläge

- Mindermengenzuschlag
- Trockeneiszuschlag
- Gefahrgutzuschlag
- Expressversand

SZABO-SCANDIC HandelsgmbH

Quellenstraße 110, A-1100 Wien

T. +43(0)1 489 3961-0

F. +43(0)1 489 3961-7

mail@szabo-scandic.com

www.szabo-scandic.com

[linkedin.com/company/szaboscandic](https://www.linkedin.com/company/szaboscandic) 

ENO2 monoclonal antibody (M04), clone 3B5

Catalog # : H00002026-M04

規格 : [100 ug]

[List All](#)

Specification

Product Description: Mouse monoclonal antibody raised against a full-length recombinant ENO2.

Immunogen: ENO2 (AAH02745, 1 a.a. ~ 434 a.a) full-length recombinant protein with GST tag. MW of the GST tag alone is 26 KDa.

Sequence: MSIEKIWAREILDSRGNPTVEVDLYTAKGLFRAAVPSGASTGIYEALELRD
GDKQRYLGKGVLKAVDHINSTIAPALISSGLSVVEQEKLNDLMELDGTEN
KSKFGANAILGVSLAVCKAGAAERELPLYRHIAQLAGNSDLILPVPFNVIN
GGSHAGNKLAMQEFMILPVGAESFRDAMRLGAEVYHTLKGVIKDKYGKD
ATNVGDEGGFAPNILENSEALELVKEAIDKAGYTEKIVIGMDVAASEFYRD
GKYDLDFKSPTDPSRYITGDQLGALYQDFVRDYPVVSIEDPFDQDDWAA
WSKFTANVGIQIVGDDLTVTNPKRIERAEEKACNCLLLKVNQIGSVTEAI
QACKLAQENGWGMVSHRSGETEDTFIADLVVGLCTGQIKTGAPCRSE
RLAKYNQLMRIEEELGDEARFAGHNFRNPSVL

Host: Mouse

Reactivity: Human

Isotype: IgG2a

Quality Control Testing: Antibody Reactive Against Recombinant Protein.

Storage Buffer: In 1x PBS, pH 7.4

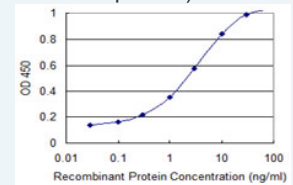
Storage Instruction: Store at -20°C or lower. Aliquot to avoid repeated freezing and thawing.

MSDS: [Download](#)

Datasheet: [Download](#)

Application Image

Sandwich ELISA (Recombinant protein)

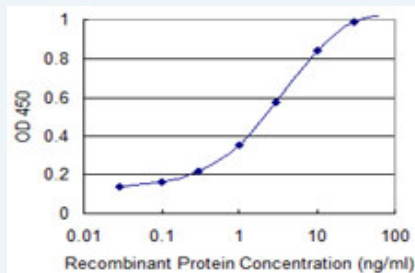


[enlarge](#)

ELISA

Applications

Sandwich ELISA (Recombinant protein)



Detection limit for recombinant GST tagged ENO2 is 0.03 ng/ml as a capture antibody.

[Protocol Download](#)

ELISA

Gene Information

Entrez GeneID: [2026](#)

GeneBank [BC002745](#)
Accession#:

Protein [AAH02745](#)
Accession#:

Gene Name: ENO2

Gene Alias: NSE

Gene Description: enolase 2 (gamma, neuronal)

Omim ID: [131360](#)

Gene Ontology: [Hyperlink](#)

Gene Summary: This gene encodes one of the three enolase isoenzymes found in mammals. This isoenzyme, a homodimer, is found in mature neurons and cells of neuronal origin. A switch from alpha enolase to gamma enolase occurs in neural tissue during development in rats and primates. [provided by RefSeq]

Other Designations: 2-phospho-D-glycerate hydrolyase, enolase 2, neural enolase, neuron specific gamma enolase, neurone-specific enolase

Gene Pathway

[Biosynthesis of alkaloids derived from histidine and purine](#)
[Biosynthesis of alkaloids derived from ornithine, lysine and nicotinic acid](#)
[Biosynthesis of alkaloids derived from shikimate pathway](#)
[Biosynthesis of alkaloids derived from terpenoid and polyketide](#)
[Biosynthesis of phenylpropanoids](#) [Biosynthesis of plant hormones](#)
[Biosynthesis of terpenoids and steroids](#) [Glycolysis / Gluconeogenesis](#) [Metabolic pathways](#)
[RNA degradation](#)

Related Disease

[Alzheimer Disease](#) [Alzheimer disease](#) [Cerebral Amyloid Angiopathy](#)
[Genetic Predisposition to Disease](#) [Neuroblastoma](#) [Schizophrenia](#) [Schizophrenia](#)