



SZABO SCANDIC

Part of Europa Biosite

Produktinformation



Forschungsprodukte & Biochemikalien



Zellkultur & Verbrauchsmaterial



Diagnostik & molekulare Diagnostik



Laborgeräte & Service

Weitere Information auf den folgenden Seiten!
See the following pages for more information!



Lieferung & Zahlungsart

siehe unsere [Liefer- und Versandbedingungen](#)

Zuschläge

- Mindermengenzuschlag
- Trockeneiszuschlag
- Gefahrgutzuschlag
- Expressversand

SZABO-SCANDIC HandelsgmbH

Quellenstraße 110, A-1100 Wien

T. +43(0)1 489 3961-0

F. +43(0)1 489 3961-7

mail@szabo-scandic.com

www.szabo-scandic.com

[linkedin.com/company/szaboscandic](https://www.linkedin.com/company/szaboscandic) 

ENO2 293T Cell Transient Overexpression Lysate(Denatured)

Catalog # : H00002026-T01

規格 : [100 uL]

[List All](#)

Specification

Transfected Cell Line: 293T

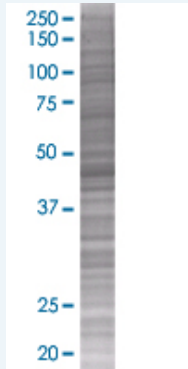
Plasmid: pCMV-ENO2 full-length

Host: Human

Theoretical MW (kDa): 47.3

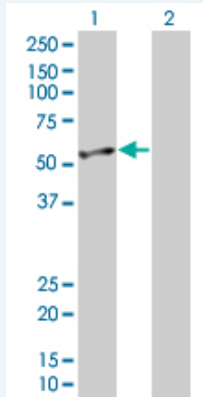
Quality Control Testing: Transient overexpression cell lysate was tested with Anti-ENO2 antibody (H00002026-B01) by Western Blots.

SDS-PAGE Gel



ENO2 transfected lysate

Western Blot



Lane 1: ENO2 transfected lysate (47.3 KDa).

Lane 2: Non-transfected lysate.

Storage Buffer: 1X Sample Buffer (50 mM Tris-HCl, 2% SDS, 10% glycerol, 300 mM 2-mercaptoethanol, 0.01% Bromophenol blue)

Storage Instruction: Store at -80°C. Aliquot to avoid repeated freezing and thawing.

MSDS:  [Download](#)

Applications

Application Image

Western Blot

Western Blot

Gene Information

Entrez GeneID: [2026](#)

GeneBank [NM_001975](#)
Accession#:

Protein [NP_001966](#)
Accession#:

Gene Name: ENO2

Gene Alias: NSE

Gene Description: enolase 2 (gamma, neuronal)

Omim ID: [131360](#)

Gene Ontology: [Hyperlink](#)

Gene Summary: This gene encodes one of the three enolase isoenzymes found in mammals. This isoenzyme, a homodimer, is found in mature neurons and cells of neuronal origin. A switch from alpha enolase to gamma enolase occurs in neural tissue during development in rats and primates. [provided by RefSeq]

Other Designations: 2-phospho-D-glycerate hydrolyase, enolase 2, neural enolase, neuron specific gamma enolase, neurone-specific enolase

Gene Pathway

[Biosynthesis of alkaloids derived from histidine and purine](#)
[Biosynthesis of alkaloids derived from ornithine, lysine and nicotinic acid](#)
[Biosynthesis of alkaloids derived from shikimate pathway](#)
[Biosynthesis of alkaloids derived from terpenoid and polyketide](#)
[Biosynthesis of phenylpropanoids](#) [Biosynthesis of plant hormones](#)
[Biosynthesis of terpenoids and steroids](#) [Glycolysis / Gluconeogenesis](#) [Metabolic pathways](#)
[RNA degradation](#)

Related Disease

[Alzheimer Disease](#) [Alzheimer disease](#) [Cerebral Amyloid Angiopathy](#)
[Genetic Predisposition to Disease](#) [Neuroblastoma](#) [Schizophrenia](#) [Schizophrenia](#)