



SZABO SCANDIC

Part of Europa Biosite

Produktinformation



Forschungsprodukte & Biochemikalien



Zellkultur & Verbrauchsmaterial



Diagnostik & molekulare Diagnostik



Laborgeräte & Service

Weitere Information auf den folgenden Seiten!
See the following pages for more information!



Lieferung & Zahlungsart

siehe unsere [Liefer- und Versandbedingungen](#)

Zuschläge

- Mindermengenzuschlag
- Trockeneiszuschlag
- Gefahrgutzuschlag
- Expressversand

SZABO-SCANDIC HandelsgmbH

Quellenstraße 110, A-1100 Wien

T. +43(0)1 489 3961-0

F. +43(0)1 489 3961-7

mail@szabo-scandic.com

www.szabo-scandic.com

[linkedin.com/company/szaboscandic](https://www.linkedin.com/company/szaboscandic) 

ENO3 polyclonal antibody (A01)

Catalog # : H00002027-A01

規格 : [50 uL]

List All

Specification

Product Description: Mouse polyclonal antibody raised against a partial recombinant ENO3.

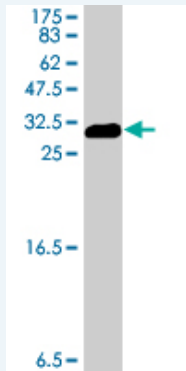
Immunogen: ENO3 (NP_001967, 228 a.a. ~ 277 a.a) partial recombinant protein with GST tag.

Sequence: KTAIQAAAGYPDKVWIGMDVAASEFYRNGKYDLDFKSPDDPARHITGEKLG

Host: Mouse

Reactivity: Human

Quality Control Testing: Antibody Reactive Against Recombinant Protein.



Western Blot detection against Immunogen (31.61 kDa) .

Storage Buffer: 50 % glycerol

Storage Instruction: Store at -20°C or lower. Aliquot to avoid repeated freezing and thawing.

MSDS: [Download](#)

Datasheet: [Download](#)

Applications

Western Blot (Recombinant protein)

[Protocol Download](#)

ELISA

Gene Information

Entrez GeneID: [2027](#)

GeneBank Accession#: [NM_001976](#)

Protein [NP_001967](#)

Application Image

Western Blot (Recombinant protein)

ELISA

Accession#:**Gene Name:** ENO3**Gene Alias:** MSE**Gene** enolase 3 (beta, muscle)**Description:****Omim ID:** [131370](#)**Gene Ontology:** [Hyperlink](#)

Gene Summary: This gene encodes one of the three enolase isoenzymes found in mammals. This isoenzyme, a homodimer, is found in skeletal muscle cells in the adult. A switch from alpha enolase to beta enolase occurs in muscle tissue during development in rodents. Mutations in this gene can be associated with metabolic myopathies that may result from decreased stability of the enzyme. Two transcripts have been identified for this gene that differ only in their 5' UTR. [provided by RefSeq]

Other Designations: 2-phospho-D-glycerate hydrolyase, ENO3, muscle enolase 3 beta, OTTHUMP00000125242, beta enolase, enolase 3, enolase-3, beta, muscle, muscle specific enolase, skeletal muscle enolase

Gene Pathway[Biosynthesis of alkaloids derived from histidine and purine](#)[Biosynthesis of alkaloids derived from ornithine, lysine and nicotinic acid](#)[Biosynthesis of alkaloids derived from shikimate pathway](#)[Biosynthesis of alkaloids derived from terpenoid and polyketide](#)[Biosynthesis of phenylpropanoids](#) [Biosynthesis of plant hormones](#)[Biosynthesis of terpenoids and steroids](#) [Glycolysis / Gluconeogenesis](#) [Metabolic pathways](#)[RNA degradation](#)**Related Disease**[Muscular Dystrophies](#), [Limb-Girdle](#)

[服務條款](#) | [隱私權政策](#) | [著作及商標](#) | [網站地圖](#)

©2016 亞諾法生技股份有限公司 Abnova Corporation. 版權所有.